

San Miguel County Stakeholder Meeting

June Nepsky, Public Health Director, RN, MN

Margaret Wacker, WCPHP Coordinator, MPH

Katherine Melland, WCPHP Health Planner, MPH



December 6th, 2016

Agenda

11:00-1:30 pm

- ▶ Welcome and Introductions
- ▶ West Central Public Health Partnership Overview, Public Health Improvement Plan Update
- ▶ Lunch
- ▶ San Miguel County Presentation
- ▶ Prioritization Process
- ▶ Discussion

Introductions

Name
Agency

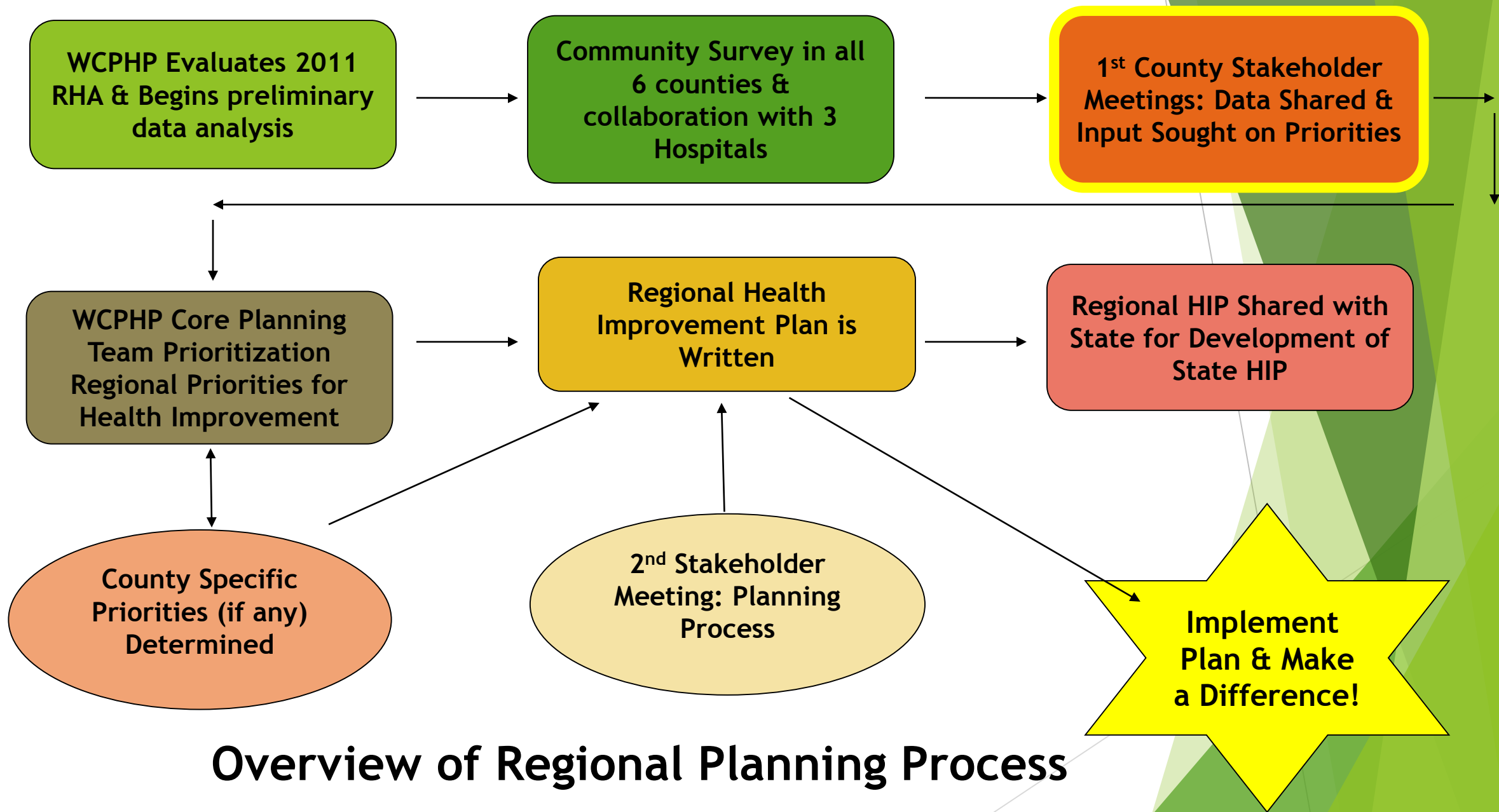


- ▶ **Regional Collaboration:**
**Delta, Gunnison, Hinsdale, Montrose, Ouray
and San Miguel Counties**
 - ▶ State model
 - ▶ Larger Impact
 - ▶ Combined expertise

Public Health

Purpose of Public Health:

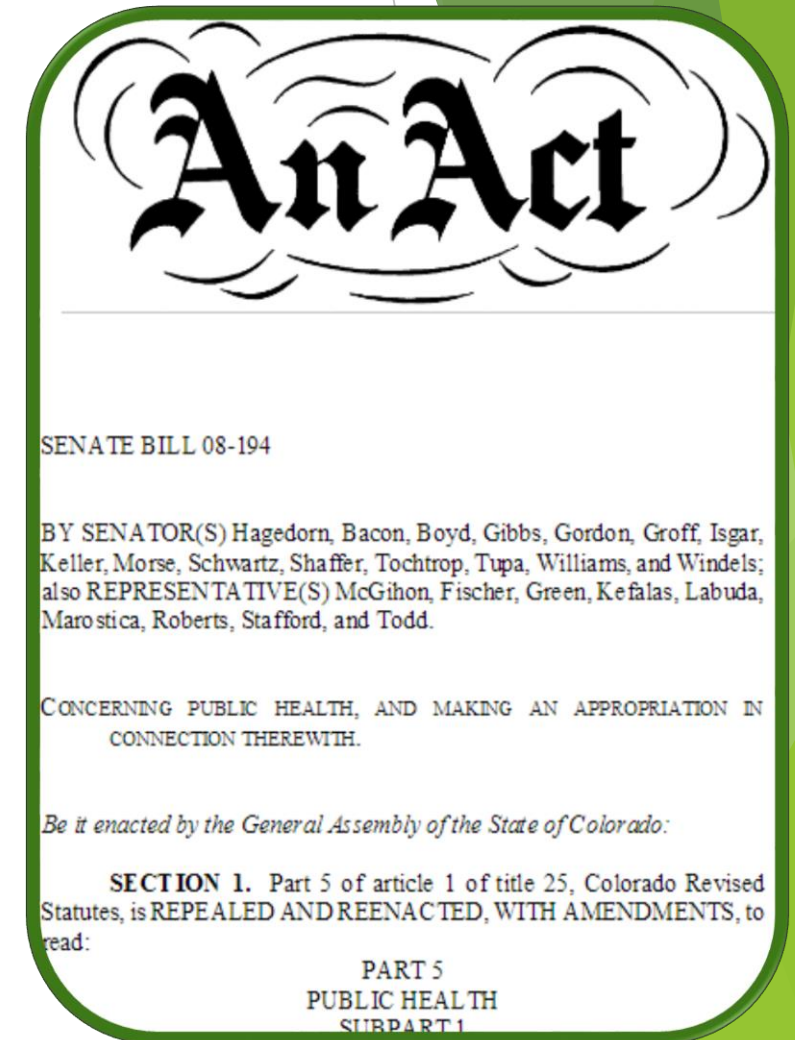
- 1. Prevent epidemics and spread of disease**
- 2. Protect against environmental hazards**
- 3. Prevent injuries**
- 4. Promote and encourage health behaviors**
- 5. Respond to disasters and assist communities in recovery**
- 6. Assure the quality and accessibility of services**



Overview of Regional Planning Process

Regional Health Assessment: 2011 & 2016

- ▶ Healthy Eating Active Living
(Obesity Prevention)
- ▶ Mental Health/Substance Abuse
- ▶ Improve Well Water Quality
- ▶ Food Safety



Success!
Thank you for
your input and
support.



San Miguel County Demographics



Race or Ethnicity:

96.5% White 2014

84% State

9.3% Hispanic 2014

20.9% State



High School Diploma:

95.3% 2014

90.4% State



English Language Learner:

10.3% 2015

14.2% State



Unemployment Rate:

2.6% 2015

3.5% State



Data: American Community Survey, 2010-2014
Kids Count 2016, Bureau of Labor Statistics, Local Area Unemployment

San Miguel County Demographics



Median Household Income:

\$59,490 2014
\$59,448 State



Persons in Poverty:

10.4% 2014
11.5% State



Self Sufficiency Standard: (2 adults, 2 children)

\$64,609 2015
266% of federal poverty level

School Aged Children in Poverty:

14.0% 2014
14.9% State



Data: American Community Survey, 2010-2014
US Census Small Area Income & Poverty Estimates (SAIPE)
University of Washington, Center for Women's Welfare

San Miguel County Demographics



Housing Stock:

6,697 units 2014

➤ **49.7%** occupied

➤ **50.3%** vacant

Healthy Housing:

High Radon Potential, Zone 1

52.46% above EPA action limit (4 pCi/L)

Lead Exposure

11.6% of housing units before 1960

Data: American Community Survey, 2010-2014, EPA Map of Radon Zones

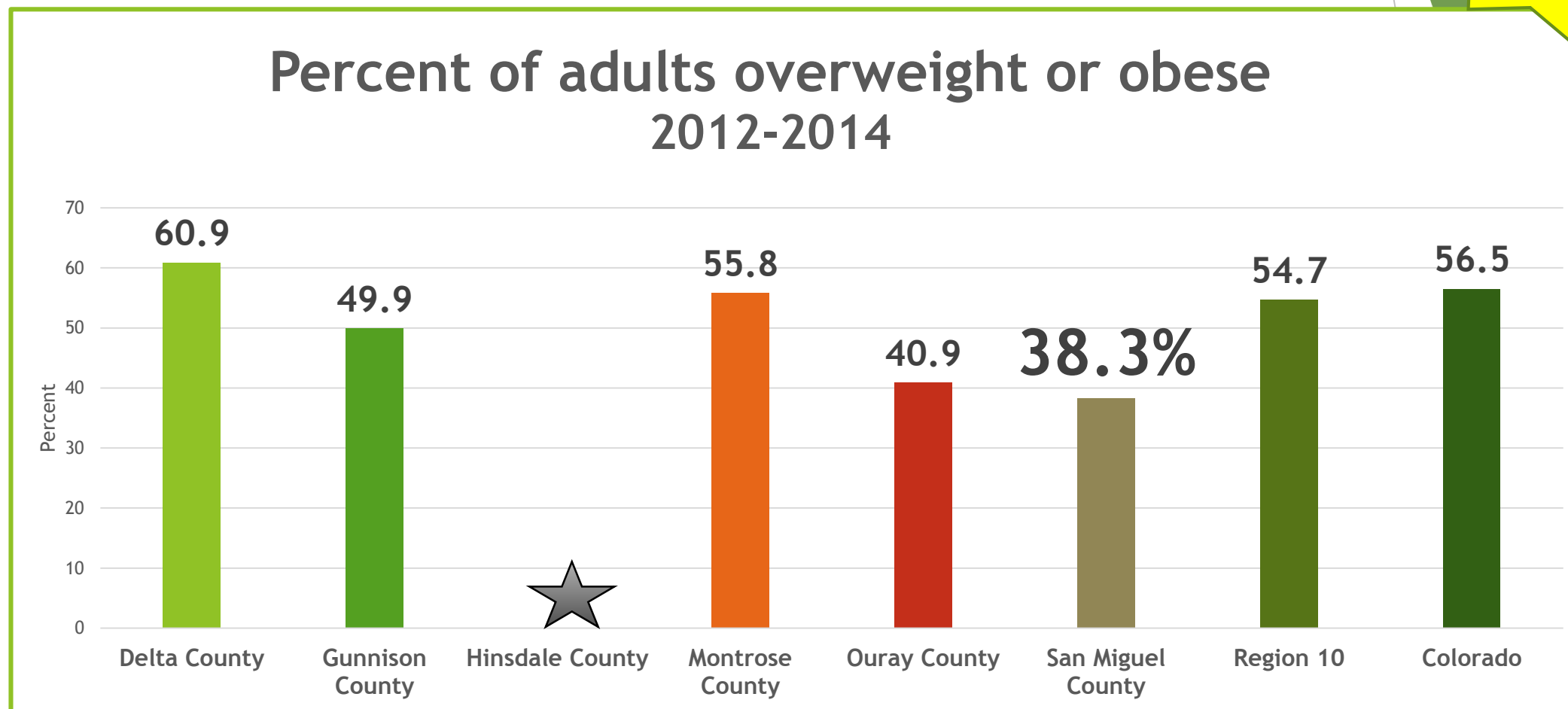
Regional Health Assessment 2011

Priority Area Update

- ▶ Regional & County Level Data
- ▶ Key Outcome Indicators
 - ▶ Population Health Outcomes= difficult to move the needle in 5 years
 - ▶ Improvements with new resources, staff, capacity of WCPHP

Heathy Eating Active Living

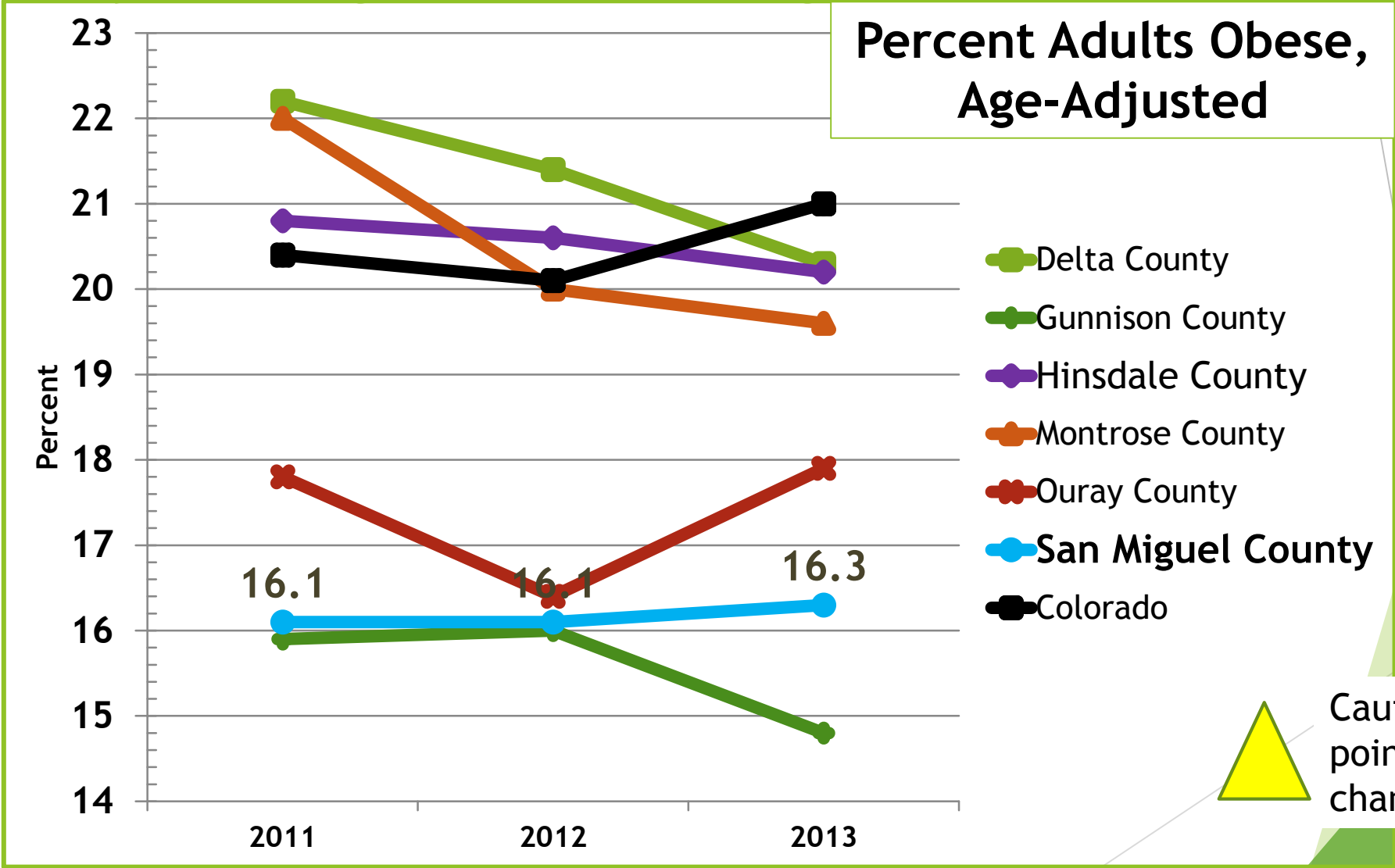
2011
Priority



Data: Behavioral Risk Factor Surveillance System (BRFSS)

Heathy Eating Active Living

2011
Priority



Caution interpreting 3 points as trend. Small changes appear large

Data: National Center for Chronic Disease Prevent and Health Promotion

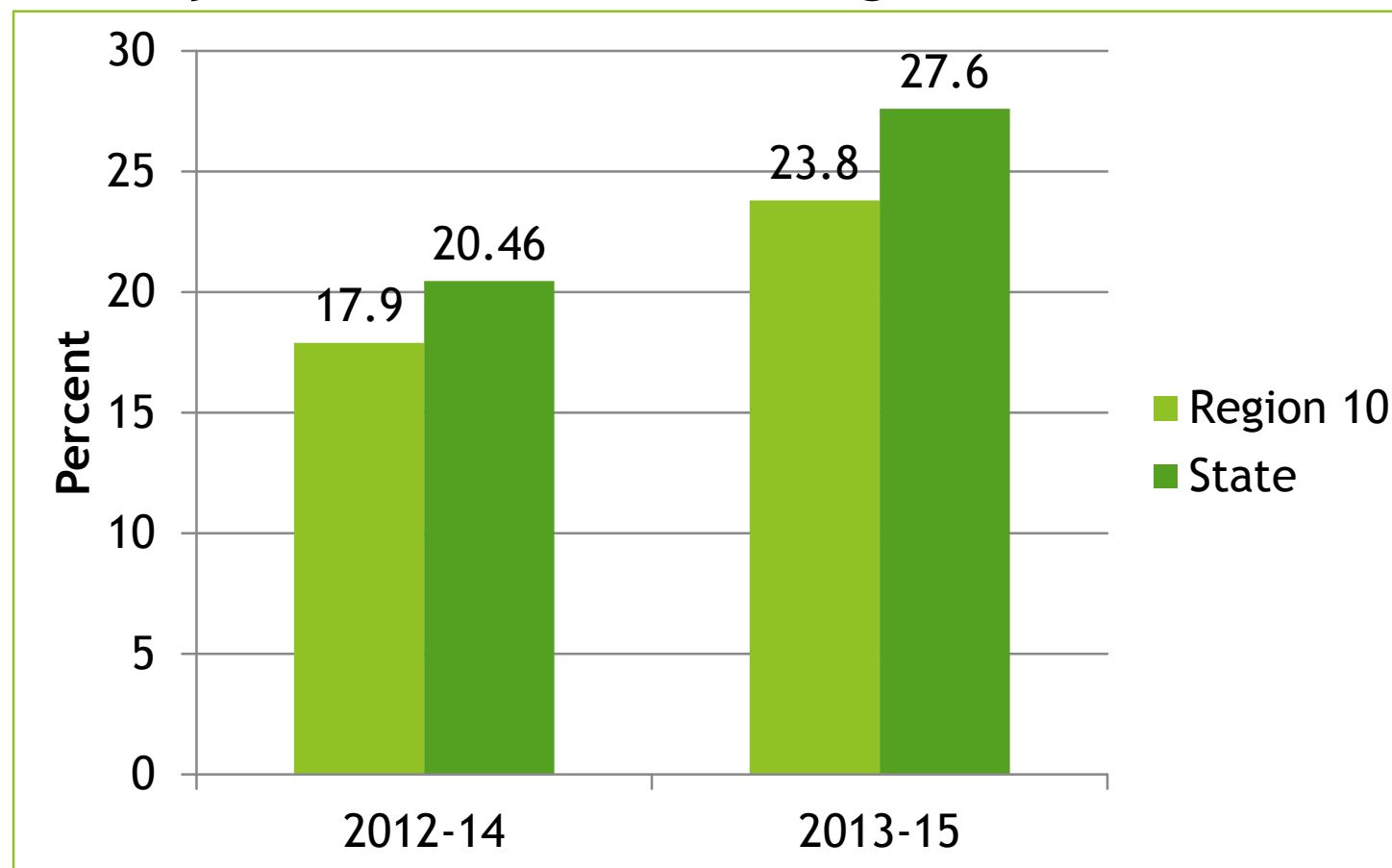
Heathy Eating Active Living

2011
Priority

Percent of Children Age 5-14 yrs who are Overweight or Obese

17.9% Region 10, 2012-14
20.46% State

23.8% Region 10, 2013-15
27.6% State



Data: BRFSS, CDPHE VISION

Mental Health

2011
Priority

Table 6. Suicide Age-Adjusted Death Rate per 100,000 People, 5 Year Averages				Number of Suicides
	2000-2004	2005-2009	2010-2014	2010-2014
DELTA	23.8	14.9	24.6	37
GUNNISON	14.5	13.5	14.9	11
HINSDALE	*	*	*	*
MONTROSE	20.9	21.8	18.2	41
OURAY	*	19.0	23.7	5
SAN MIGUEL	6.3	13.5	10.2	5
COLORADO	15.9	16.7	18.4	4,892

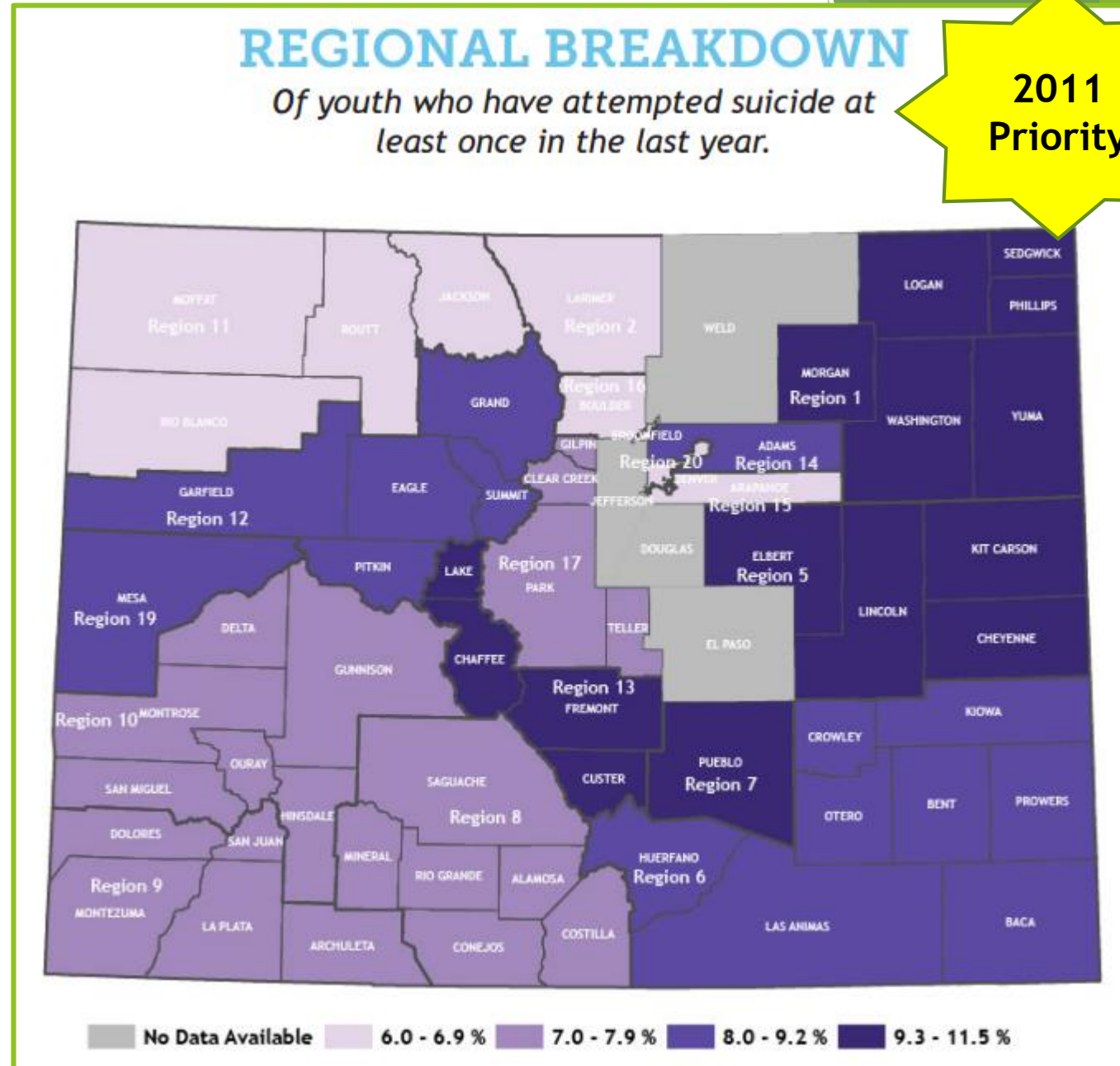
Data: CO Health Information Dataset, Death Query, Death Certificate, CO Health & Hospital Information Set

Mental Health

Percent of high school students who have attempted suicide at least once in the last year

↓ **6.9%** Region 10, 2015
7.8% State

↓ **5.1 %** Region 10, 2013
6.6% State



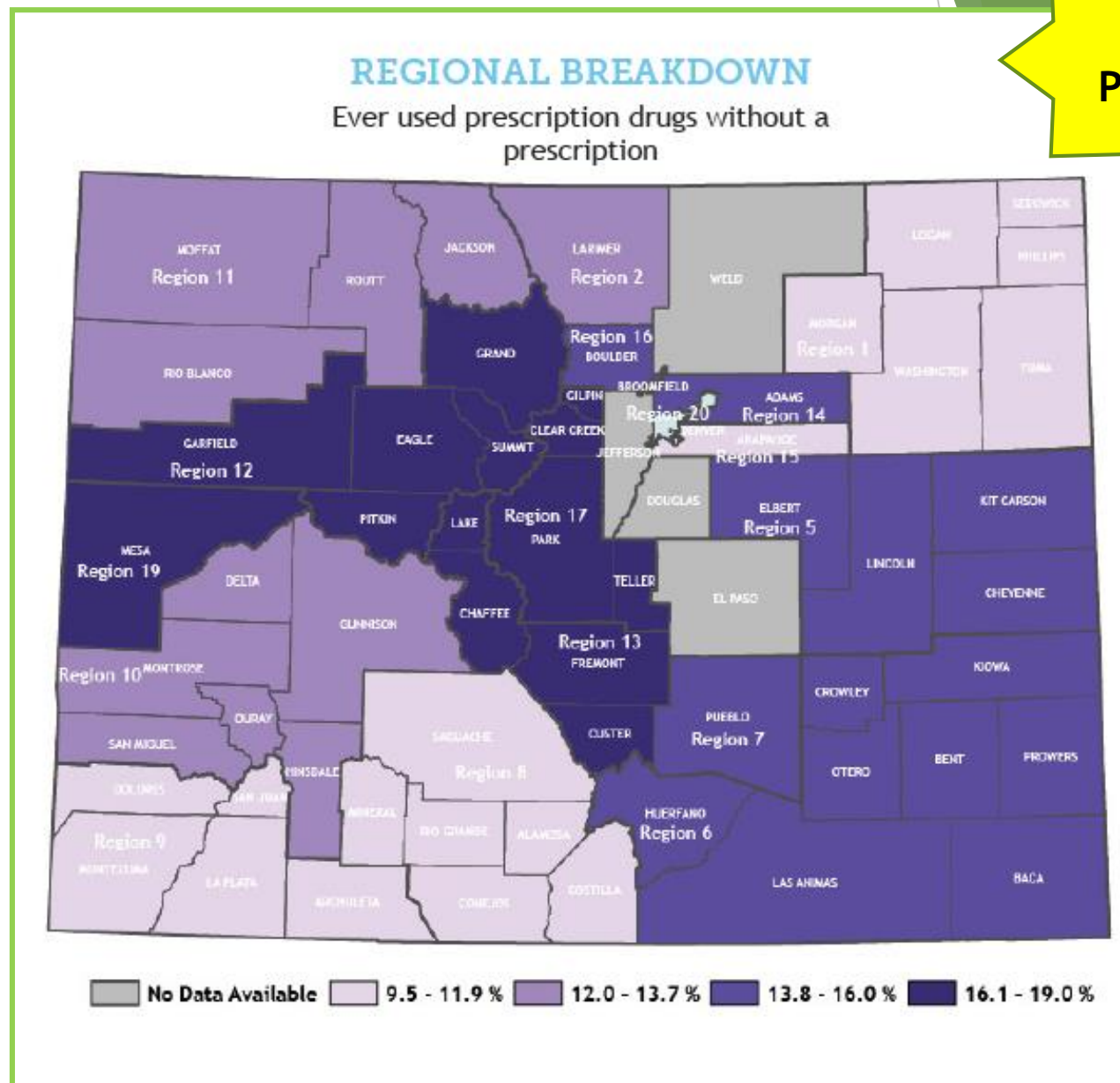
Substance Abuse

Percent of high school students who have ever used prescription drugs without a prescription

■ **13.7%** Region 10, 2015
■ 13.7% State

↑ **15.2%** Region 10, 2013
13.6% State

2011
Priority



Well Water Quality



10% of Region 10
Residents drinking
water= Private Well



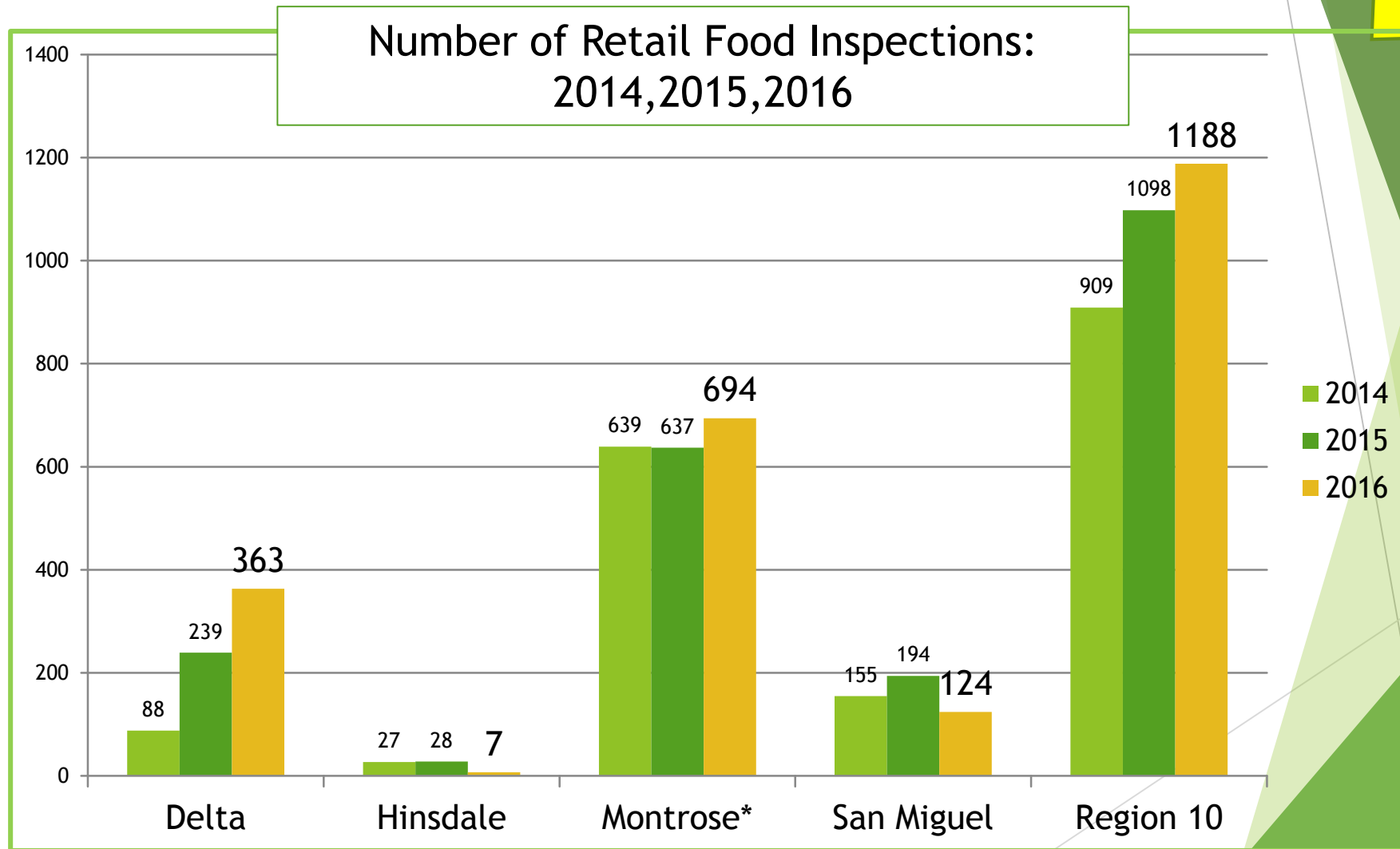
10,000
Residents primary
drinking water sources
is unregulated

**2011
Priority**

Data: BRFSS

Food Safety

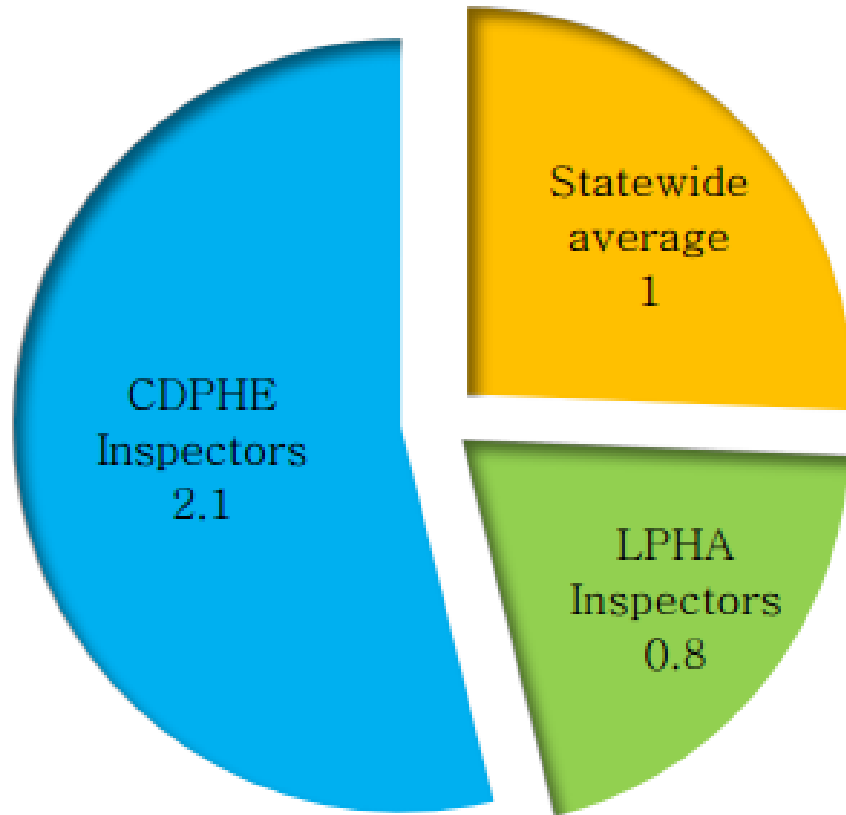
2011
Priority



Data: CO Environmental Public Health Tracking, CDPHE, Division of Envs. Health & Sustainability

Food Safety

2011
Priority



Food-Borne Illness
Critical Violations per
Retail Food Inspection**

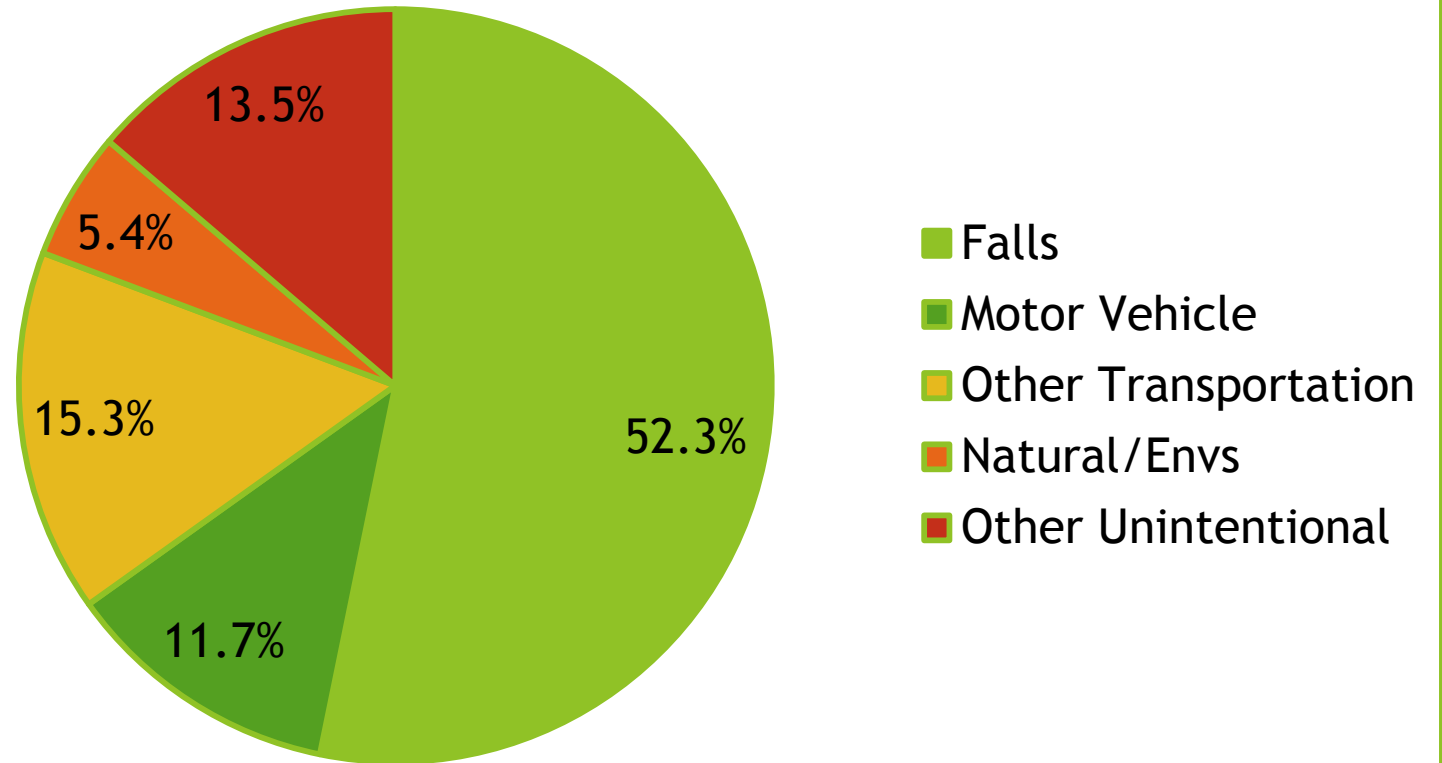
1.26 Food-Borne Illness
Critical Violations per Retail
Food Inspection,
San Miguel County 2016

Injury

Falls

Highest rate of injury hospitalizations
2011-2014

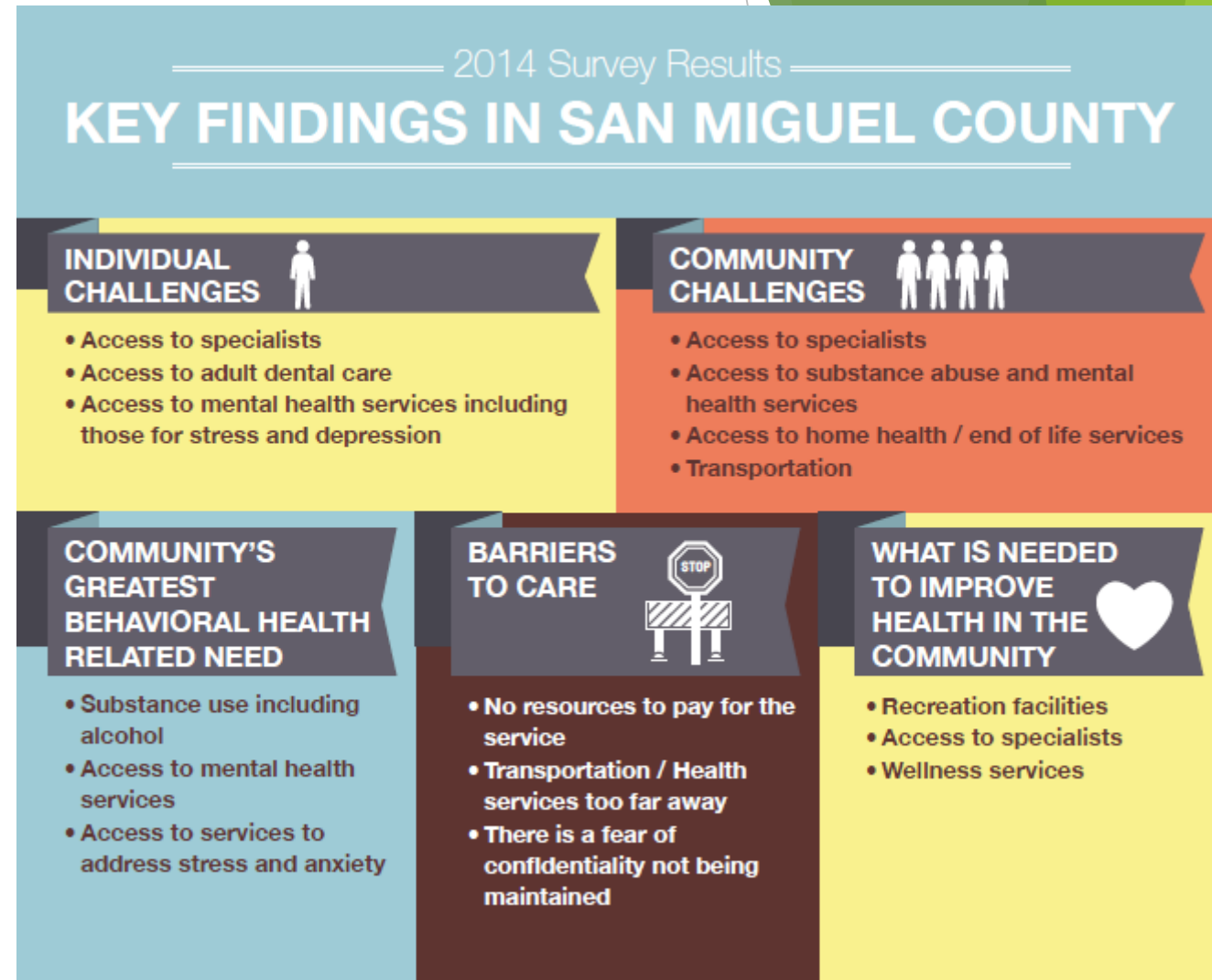
Unintentional Injury Hospitalizations
2011-2014, Percent by Major Mechanism



Data: Health Statistics and Vital Records, CO Injury Prevention Statistics

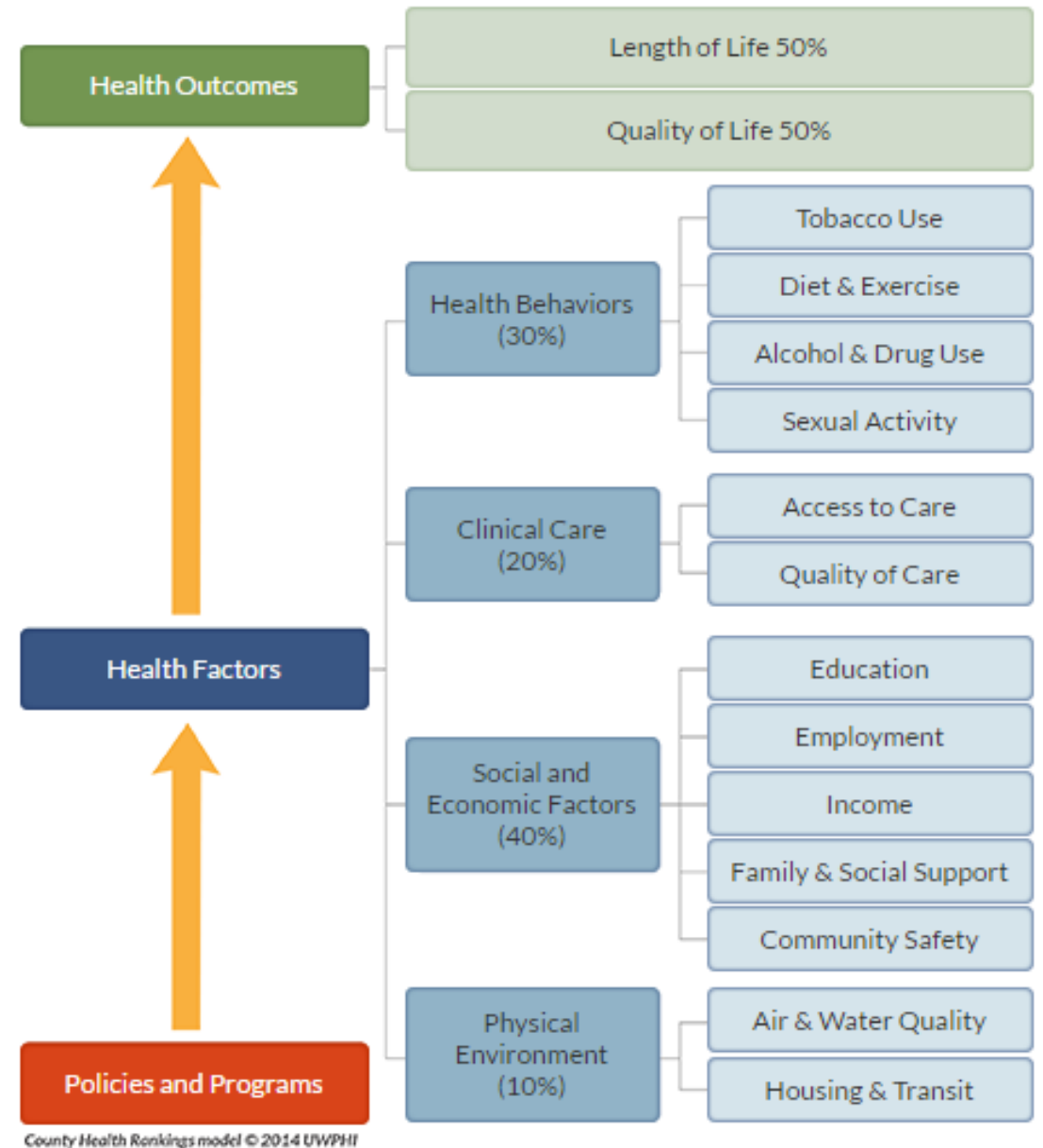
Access to Health

- ▶ Mental Health/Substance Abuse
- ▶ Primary Care
- ▶ Dentists
- ▶ Specialists
- ▶ Uninsured/Cost of Insurance
- ▶ System Navigation
- ▶ Health Literacy



Overall Health: County Health Rankings

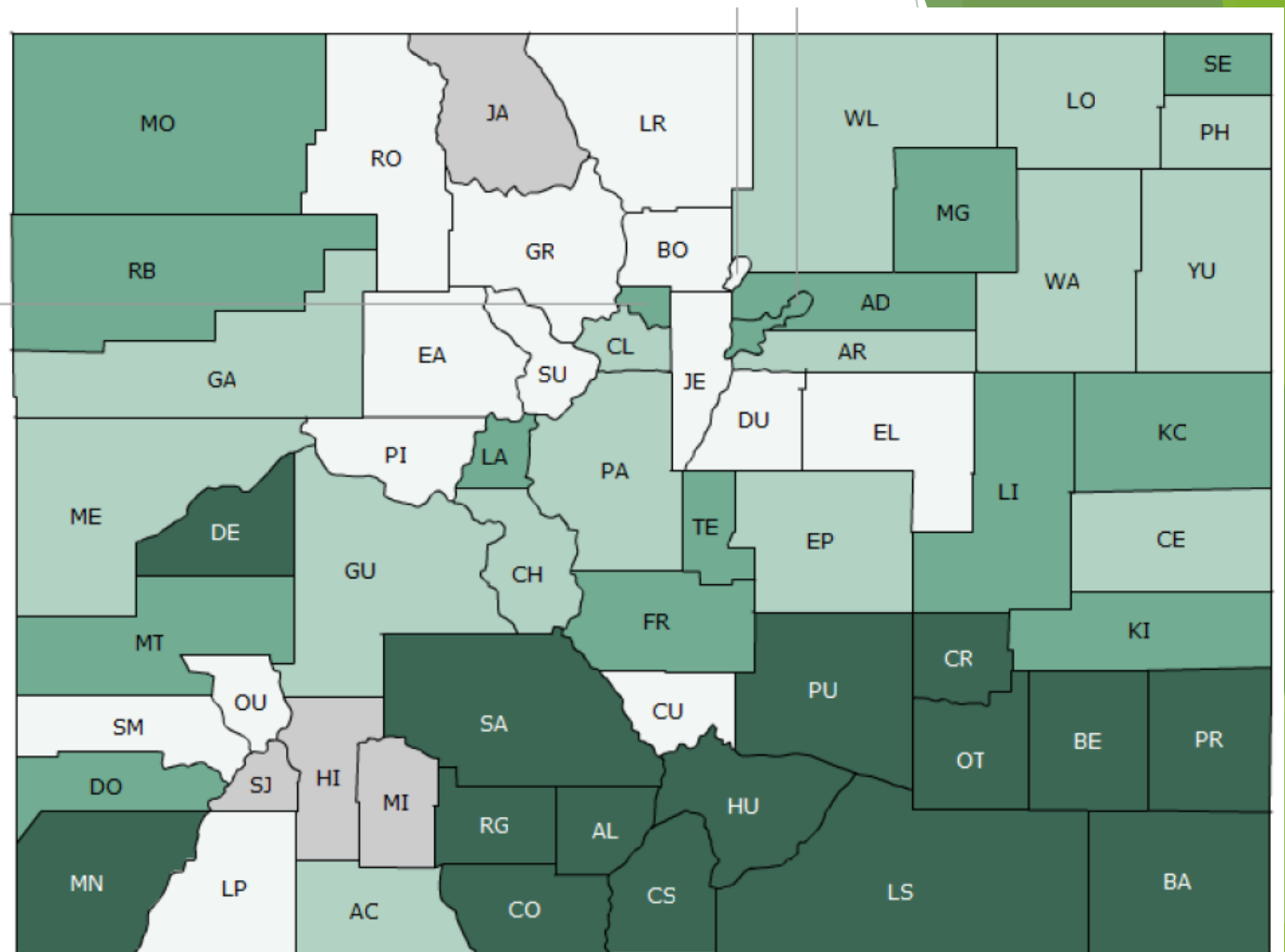
- ▶ Compare health across state of CO
- ▶ Health Outcomes
- ▶ Health Factors



Health Outcomes:

San Miguel County 10 of 60 counties

- Length of life (14)
- Quality of life (4)

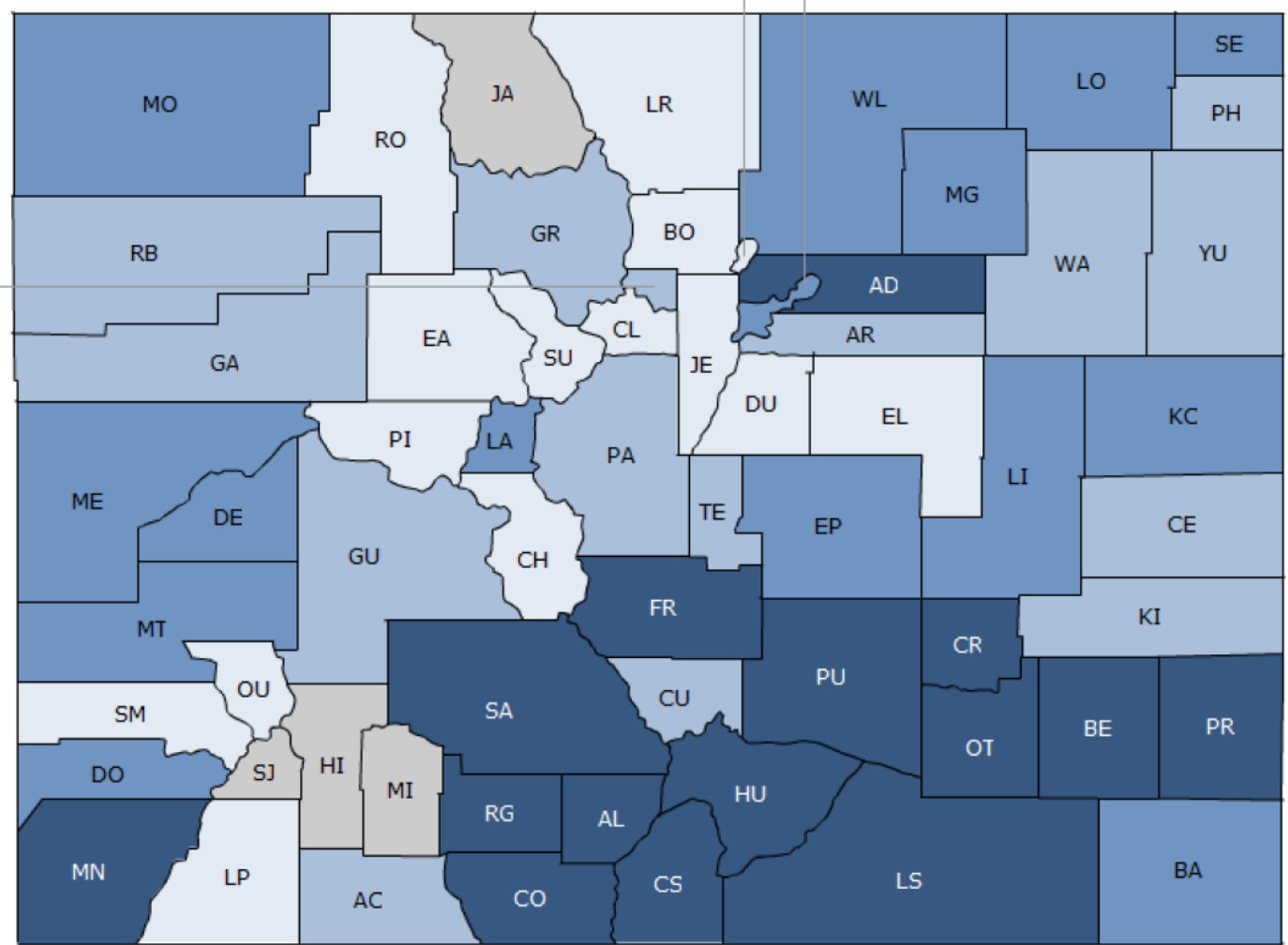


Rank 1-15 Rank 16-30 Rank 31-45 Rank 46-60 Not Ranked

Health Factors:

San Miguel County 15 of 60 counties

- Health Behaviors (18)
- Clinical Care (37)
- Social & Economic (16)
- Physical Environment (10)



Rank 1-15 Rank 16-30 Rank 31-45 Rank 46-60 Not Ranked

Strengths

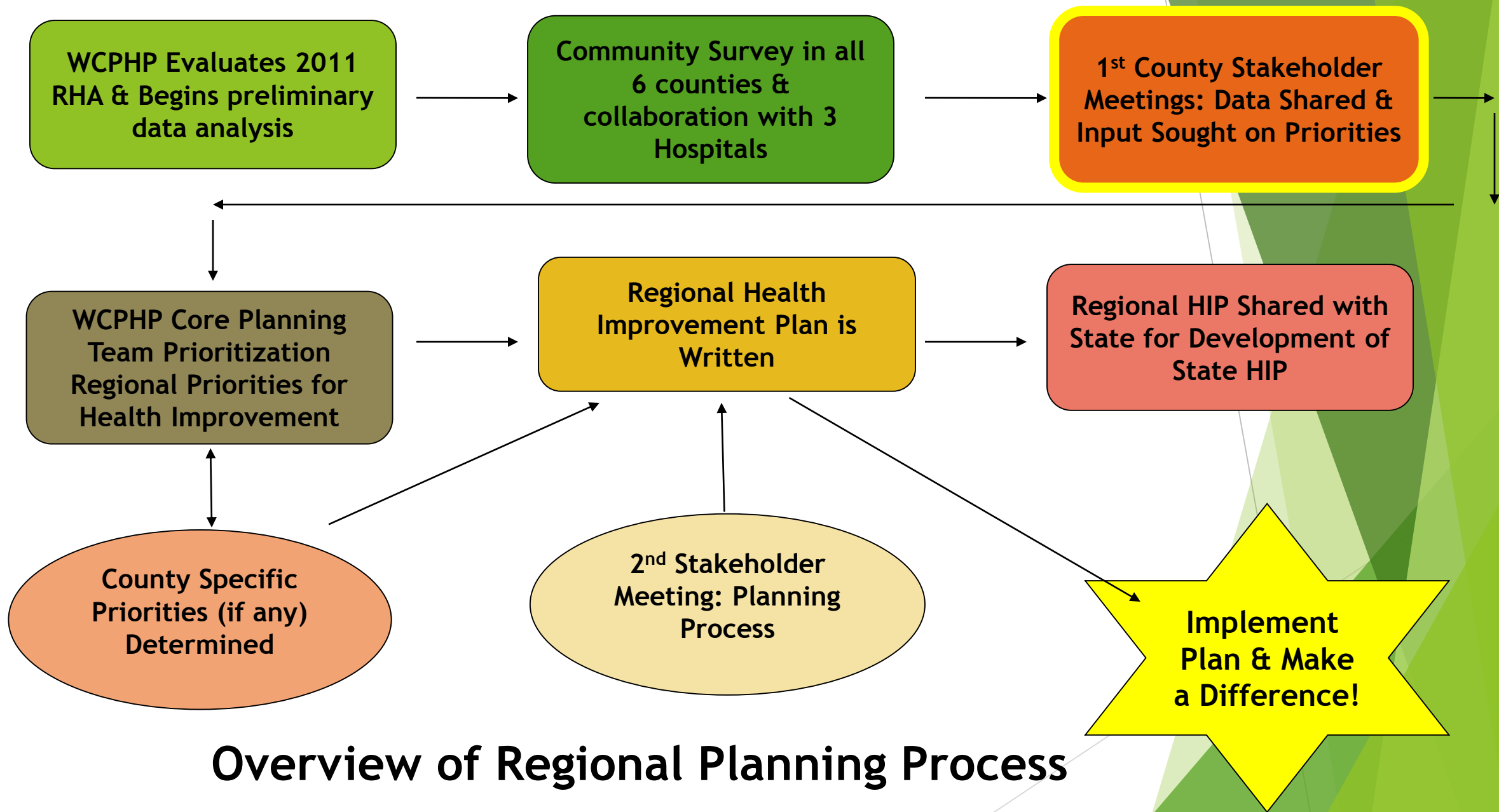
- ▶ Low Overweight & Obese
- ▶ Physically Active
- ▶ Low Unemployment
- ▶ Education Level
- ▶ Community Partners/Resources
- ▶ Natural Resources

Opportunities

- ▶ Healthy Eating Active Living
- ▶ Mental Health/Substance Abuse
- ▶ Private Well Water
- ▶ Food Safety
- ▶ Access to Health
- ▶ Injury

Prioritization Process

- ▶ Overview of process
- ▶ What we will do with results



Overview of Regional Planning Process

Core Planning Team Prioritization Tool

Colorado Health Assessment and Planning System Prioritization Scoring Tool

Instructions: Rate each criteria on a scale of 0 to 2 with 0 = "no" 1 = "somewhat" and 2 = "yes"

	Significance to Public Health		Ability to Impact the Issue		Capacity to Address the Issue		Prior Priority	TOTALS
	Does the issue impact a large number or high percentage of people in our community?	Do health disparities exist? (Are sub-populations more affected than the general public?)	Do strategies exist that can be implemented locally produce the desired outcome?	Does community support for change exist, including political will?	Is a local organization prepared to take the lead on the issue?	Are sufficient resources (funding, staff, expertise) available or obtainable?	Was the issue a priority in your last public health improvement plan?	
Criteria Weight:								
Issue 1.								0
Issue 2.								0
Issue 3.								0
Issue 4.								0
Issue 5.								0
Issue 6.								0
Issue 7.								0

Prioritization Process

- ▶ Small Groups
- ▶ Independent Idea Generation
- ▶ Round Robin: list top health issue
- ▶ Clarify
- ▶ Rank on index Cards

What are the top 5 health concerns in San Miguel County?

Step 1 (5 min.)

Idea Generation

- ▶ Break into small groups, sit in circle
- ▶ Individually, take a few minutes to list your ideas on a worksheet
- ▶ Work independently

Step 2 (10 min.)

Small Group Round Robin

- ▶ Get all the ideas out quickly
- ▶ Briefly share 1 top health concern
- ▶ Use key words
- ▶ Next person shares around in a circle
- ▶ Share new ideas
- ▶ Facilitator may ask clarifying questions

What are the top 5 health concerns in San Miguel County?

Step 3 (10 min.)

Clarify

- ▶ Does an item need clarifying?
- ▶ Agree with logic or relative importance?
- ▶ Group items together?

Step 4 (10 min.)

Rank

- ▶ Individually rank each item
- ▶ Use index cards to give a rank

What are the top 5 health concerns in San Miguel County?

Step 5

Sort and Score

- ▶ Volunteers help read score
- ▶ Take a break while facilitators add up the scores

Step 6

Discuss Results

- ▶ Which got the highest score?
- ▶ Any ties? Which got the most “votes”?
- ▶ Share with other group

“#2” Write the corresponding item number in the upper left corner

Write out your chosen item from the list:
“Mental Health for Families”

#2
Item
Number

Mental Health in Families

#5
Ranking
Number

We will use the scale 1-5:

1 = least important 5 = most important

Out of your 5 ideas, pick the one item that you think is *MOST* important.

Write 5 in the lower right hand corner of the card.

Next, pick the one item of the remaining 4 that you think is the least important compared to the others.

Write 1 in the lower right hand corner.

#3
Item
Number

Health Eating Active Living

#4
Ranking
Number

We will use the scale 1-5:

1 = least important 5 = most important

Next, pick one item of the remaining 3 that you think is the most important of those remaining and write 4 in the lower right hand corner.

Next, pick the one item of the remaining 2 that you think is the least important and write 2 in the lower right hand corner.

What are the top 5 health concerns in San Miguel County?

Step 5

Sort and Score

- ▶ Volunteers help read score
- ▶ Take a break while facilitators add up the scores

Step 6

Discuss Results

- ▶ Which got the highest score?
- ▶ Any ties? Which got the most “votes”?
- ▶ Share with other group

Next Steps

- ✓ Systematically review and combined the list to come up with one set of top 5 recommendations to fairly and equitably represent the community's input from this process.
- ✓ Share results with Stakeholders
- ✓ Share results with WCPHP Core Planning Team and hospitals: Prioritizations determined for regional Public Health process and hospitals
- ✓ Stakeholders invited to participate in planning process in 2017

The background features abstract, overlapping green geometric shapes, primarily triangles and polygons, in various shades of green, creating a modern and dynamic design.

~Thank You~

mwacker@gunnisoncounty.org

kmelland@gunnisoncounty.org

970-641-7913

Mapping/GIS Tools:

CDPHE VISION

<https://www.colorado.gov/pacific/cdphe/vision-data-tool>

CDPHE Community Level Estimates

http://www.cohealthmaps.dphe.state.co.us/cdphe_community_level_estimates/

CDPHE Community Inclusion Indicators

http://www.cohealthmaps.dphe.state.co.us/colorado_community_inclusion/

Community Commons

<http://www.communitycommons.org/maps-data/>