

Ouray County Stakeholder Meeting

Elisabeth Lawaczeck, Public Health Director

Margaret Wacker, WCPHP Coordinator

Katherine Melland, WCPHP Health Planner



November 9th, 2016

Agenda

10:00-12:30 pm

- ▶ PHIP 2011-2016
- ▶ County Health Overview
- ▶ Prioritization
- ▶ Discussion
- ▶ Lunch



► **Regional Collaboration:**

**Delta, Gunnison, Hinsdale, Montrose, Ouray
and San Miguel Counties**

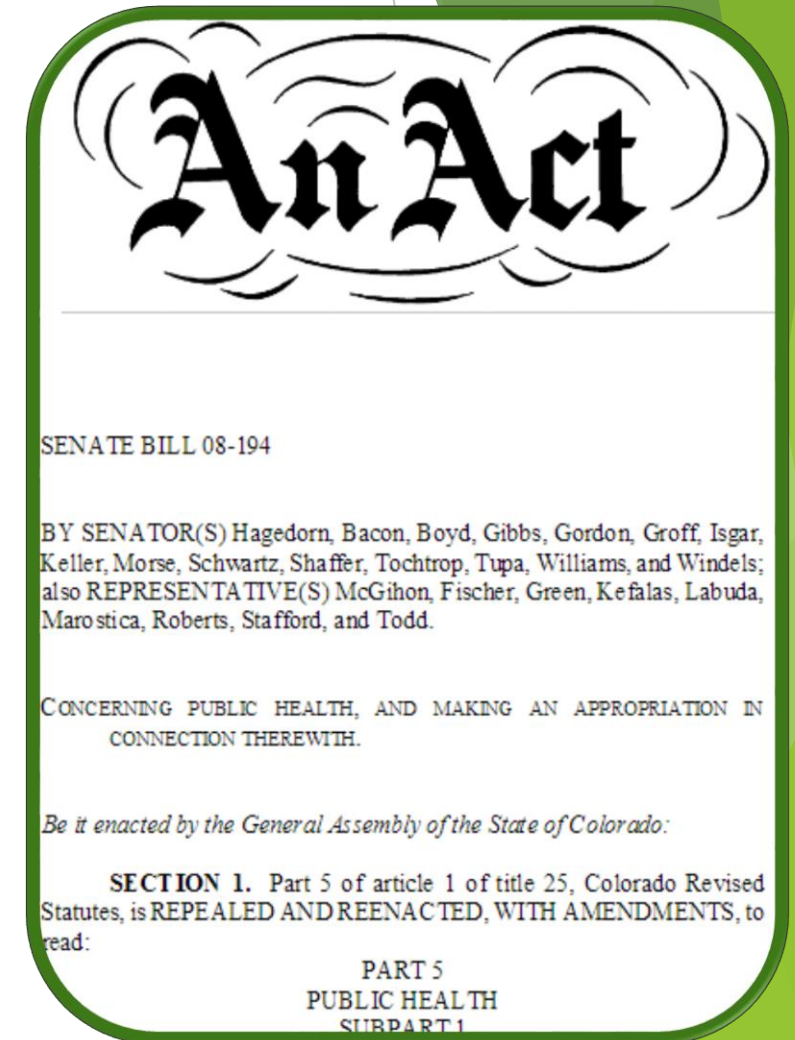
- **State model**
- **Larger Impact**
- **Combined expertise**

Success!
Thank you for
your input and
support.

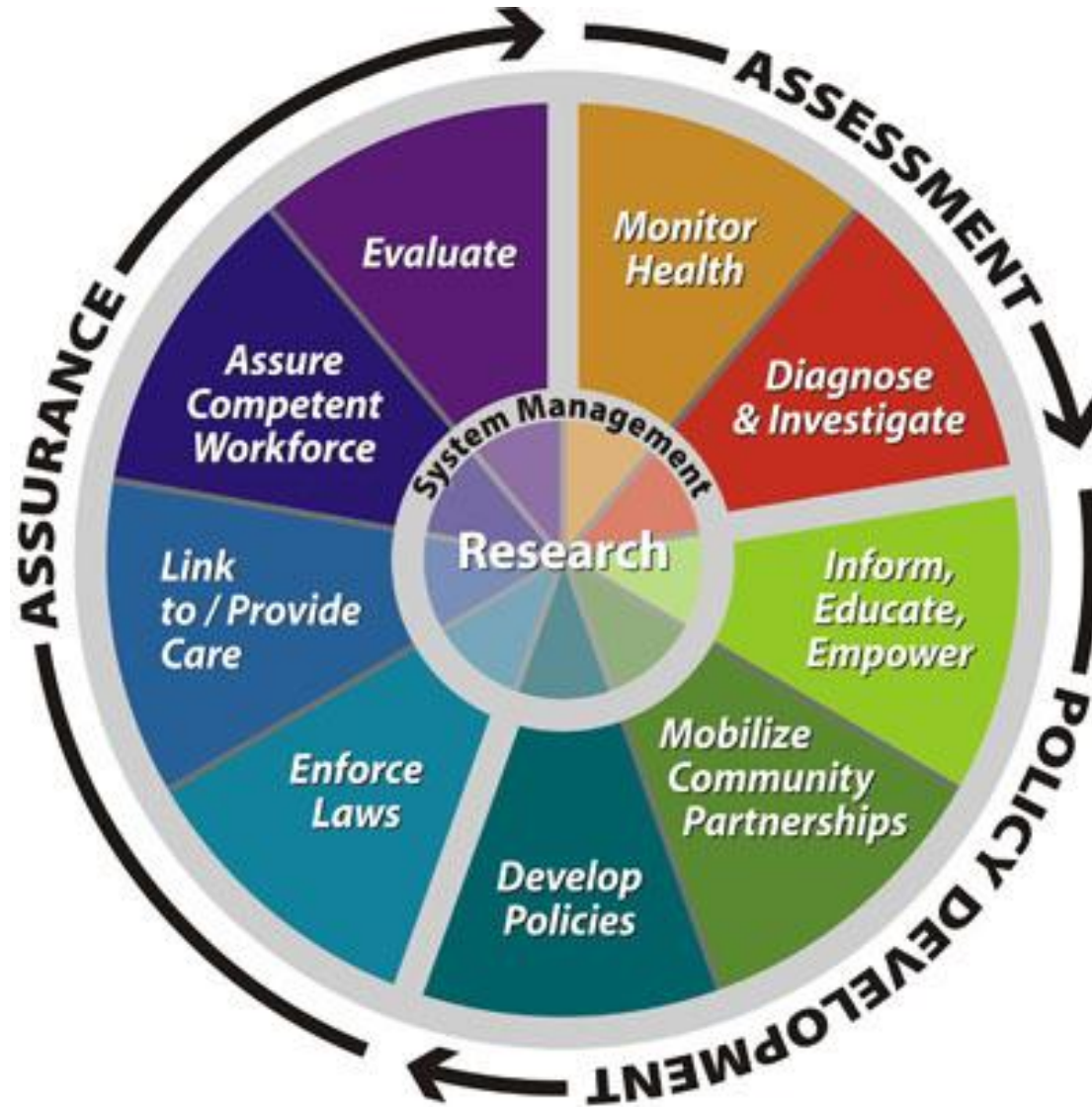


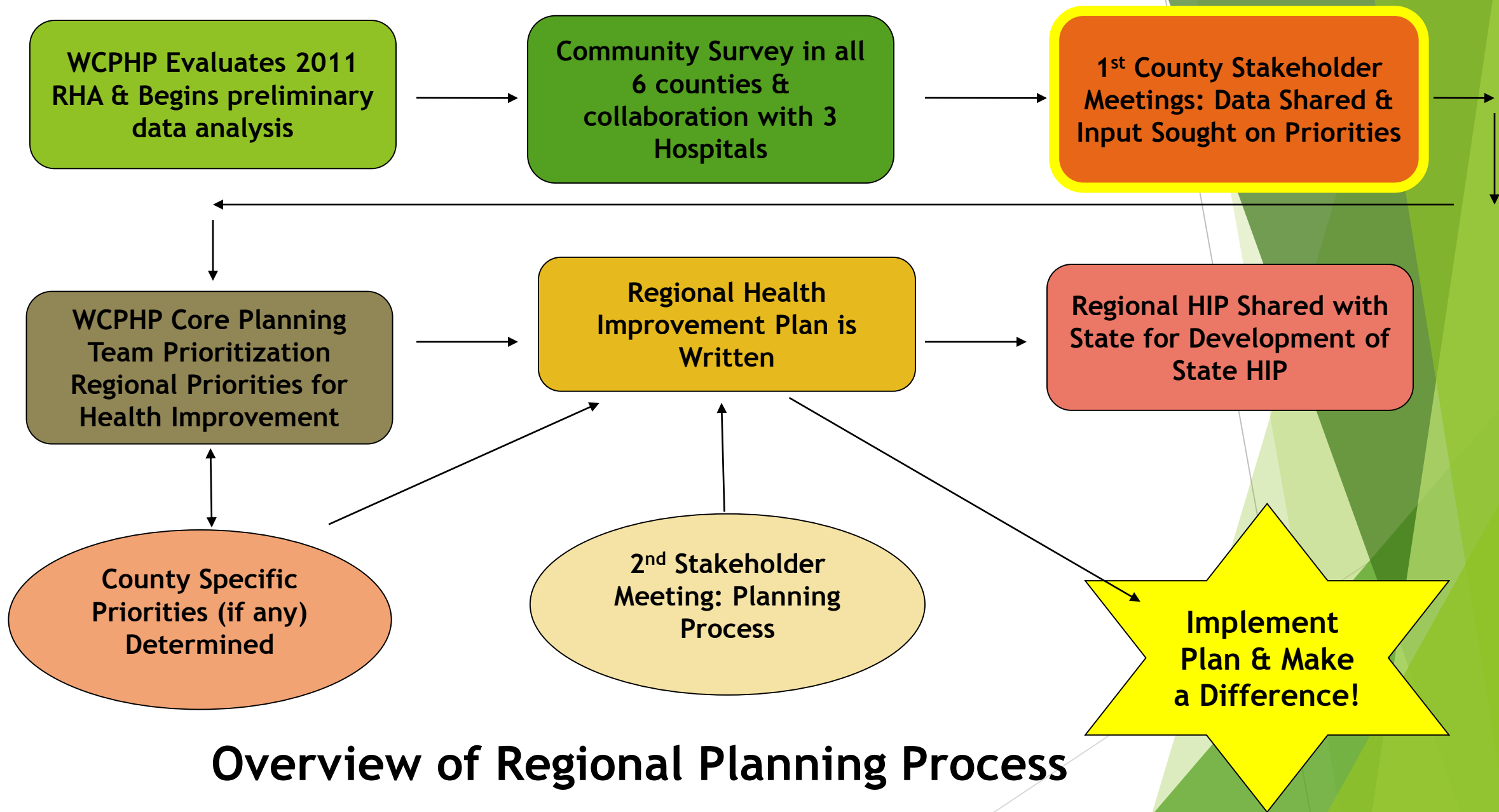
Regional Health Assessment: 2011 & 2016

- ▶ Healthy Eating Active Living
(Obesity Prevention)
- ▶ Mental Health/Substance Abuse
- ▶ Improve Well Water Quality
- ▶ Food Safety



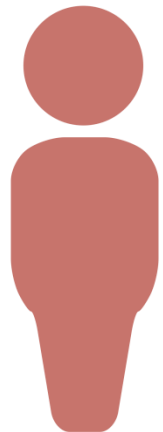
Public Health Core Services





Overview of Regional Planning Process


Ouray County Demographics



Population

Region 10: **99,770**

Ouray County: **4,587**

 **3%**
2010-2014



Median Age:

52.6 yrs 2014
25% over 65 yrs Ouray
13% over 65 yrs CO

Data: American Community Survey, 2010-2014
CO Region and Management Report by State Demography Office, 2015

Ouray County Demographics



Race or Ethnicity:

92.3% White
6% Hispanic 2014



High School Diploma:

98.1% 2014
90.4% State

English Language Learner:

3.3% 2015
14.2% State

Graduation Rate:

86.4% 2015
77.3% State

Data: American Community Survey, 2010-2014
Kids Count 2016, CO Dept of Education

Ouray County Demographics



Median Household Income:

\$60,701 2014
\$59,448 CO

Persons in Poverty:

9.6% 2014
11.5% CO



Self Sufficiency Standard: (2 adults, 2 children)

\$63,997 2015
264% of federal poverty level

School Aged Children in Poverty:

12.9% 2014
14.9% CO

Data: American Community Survey, 2010-2014
US Census Small Area Income & Poverty Estimates (SAIPE)
University of Washington, Center for Women's Welfare

Ouray County Demographics



Unemployment Rate:

3.3% 2015



8.0% 2010

Travel time to work:



21 minutes

Data: Bureau of Labor Statistics, Local Areas,
American Community Survey 2010-2014

Ouray County Demographics



Occupied Housing
Stock:

1,969

73% owned

27% rented

High Radon Potential

Ouray County= Zone 1

**17% housing units built before
1960s**

\$389,600

Ouray County Median Home Value

\$239,400

CO Median Home Value

Data: American Community Survey, 2010-2014, EPA Map of Radon Zones

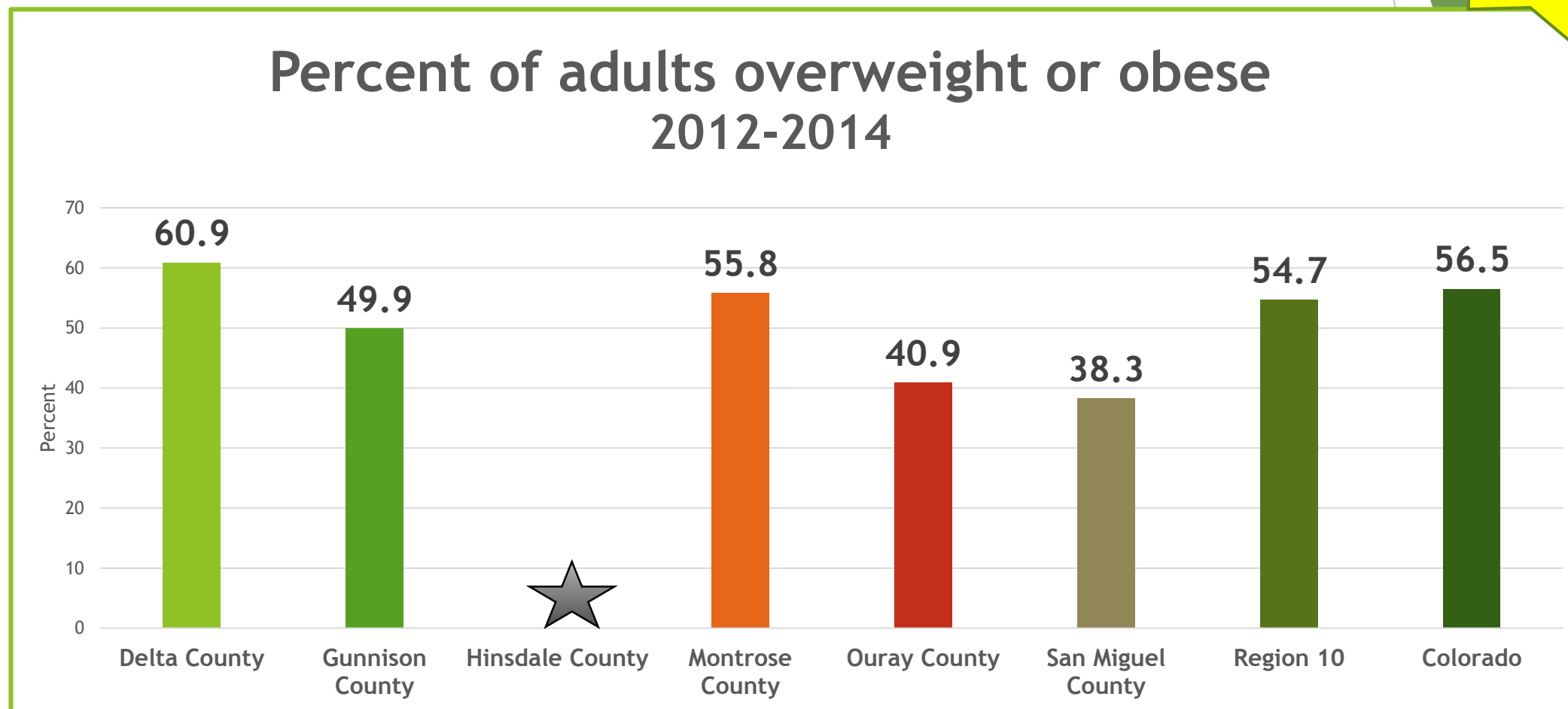
Regional Health Assessment 2011

Priority Area Update

- ▶ Regional level data
- ▶ Key Outcome Indicators
 - ▶ Population Health Outcomes= difficult to move the needle in 5 years
- ▶ Improvements with new resources, staff, capacity of WCPHP

Heathy Eating Active Living

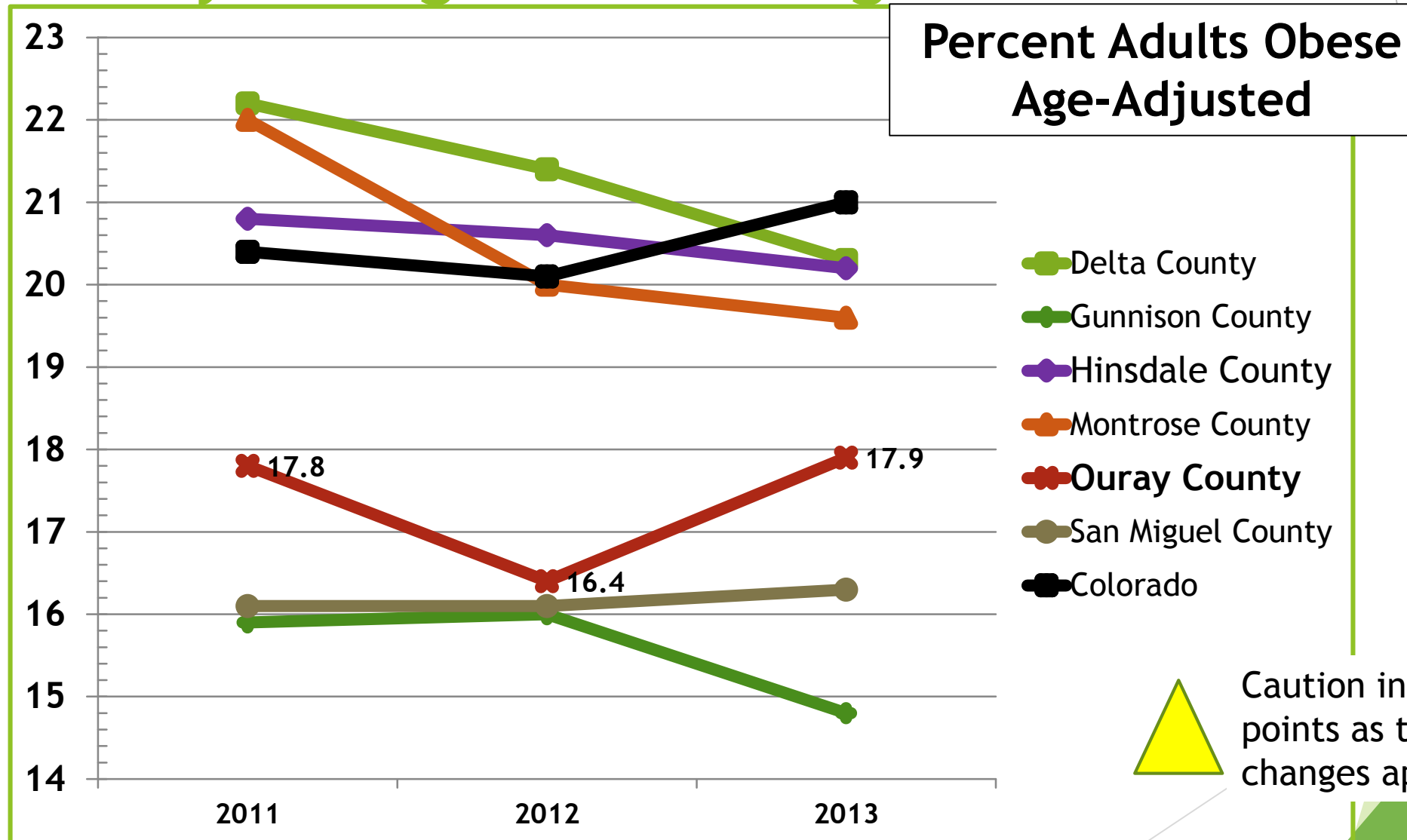
2011
Priority



Data: Behavioral Risk Factor Surveillance System (BRFSS)

Heathy Eating Active Living

2011
Priority



Caution interpreting 3 points as trend. Small changes appear large

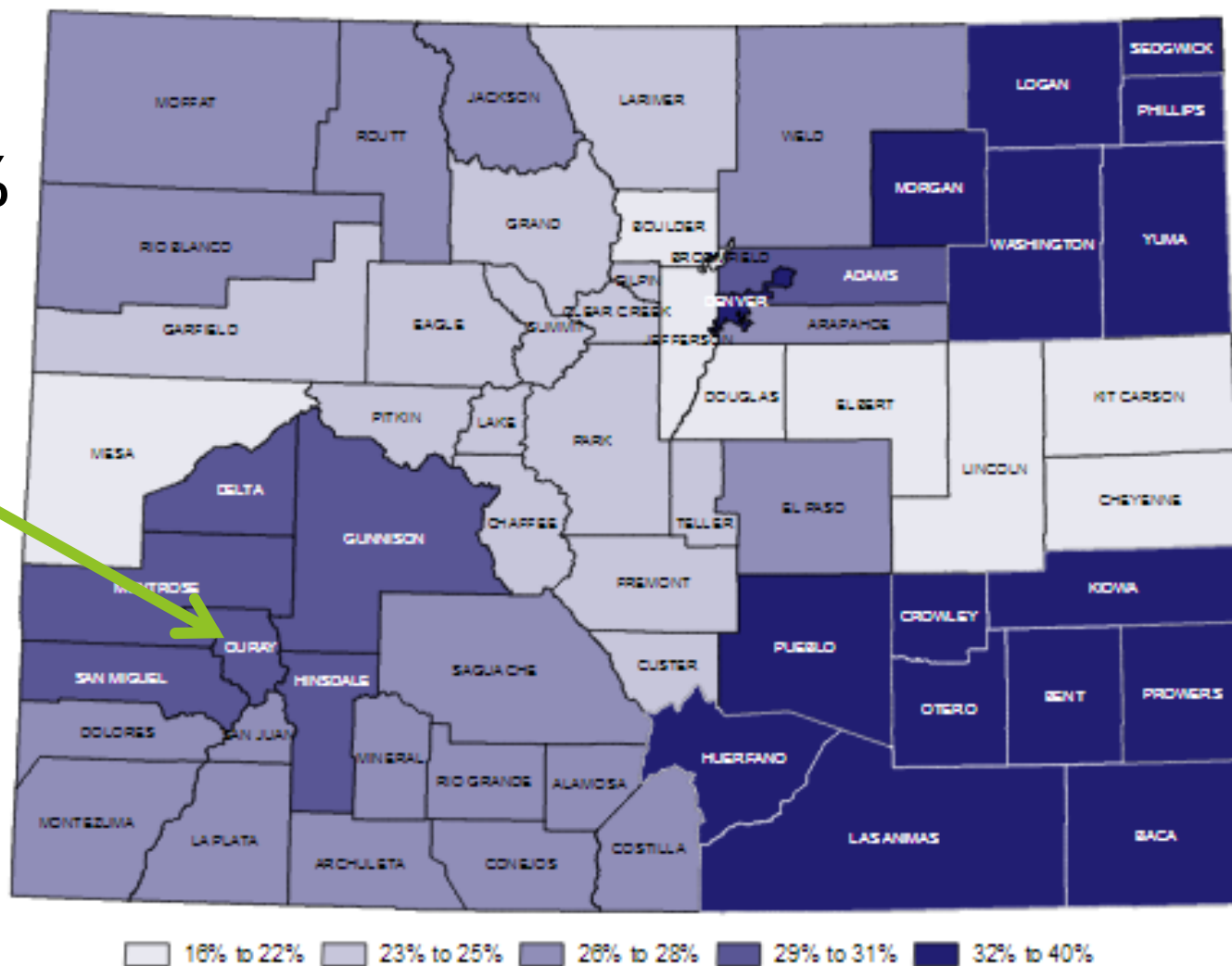
Data: National Center for Chronic Disease Prevent and Health Promotion, BRFSS

Heathy Eating Active Living

2011
Priority

Region 10: 29-31%
Percent of Children
Age 2-14 who are
overweight or obese

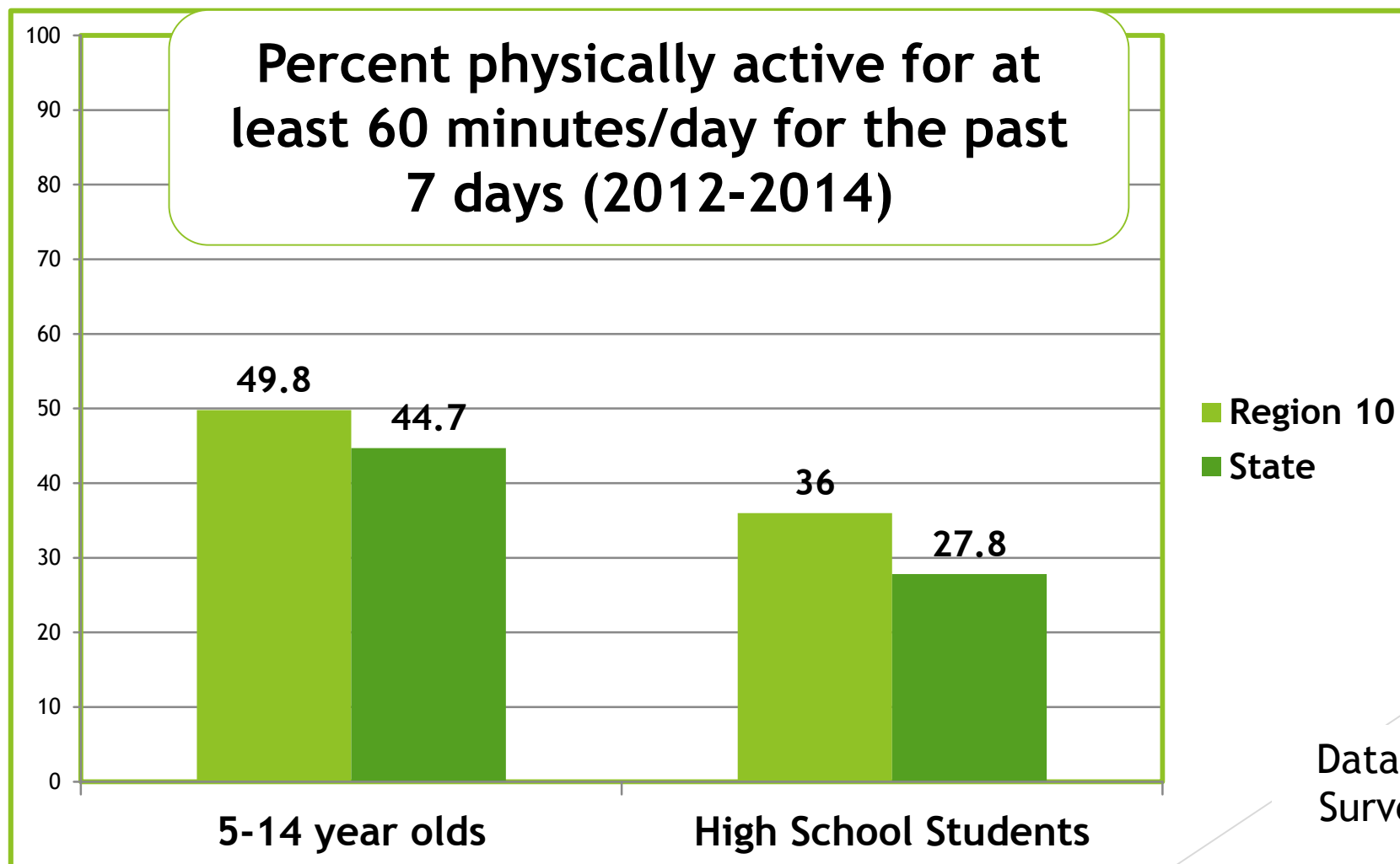
State of CO: 26.9%



Data: CO Child Health Survey,
Health Statistic Region

Heathy Eating Active Living

2011
Priority



Mental Health

2011
Priority

Table 6. Suicide Age-Adjusted Death Rate per 100,000 People 5 Year Averages					Number of Suicides
	1995- 1999	2000- 2004	2005- 2009	2010- 2014	2010-2014
DELTA	25.7	23.8	14.9	24.5	37
GUNNISON	21.7	14.5	13.5	15.0	11
HINSDALE	114.6	*	*	*	*
MONTROSE	22.8	20.9	21.8	18.1	41
OURAY	19.7	*	19.0	23.4	5
SAN MIGUEL	28	6.3	13.5	10.2	5

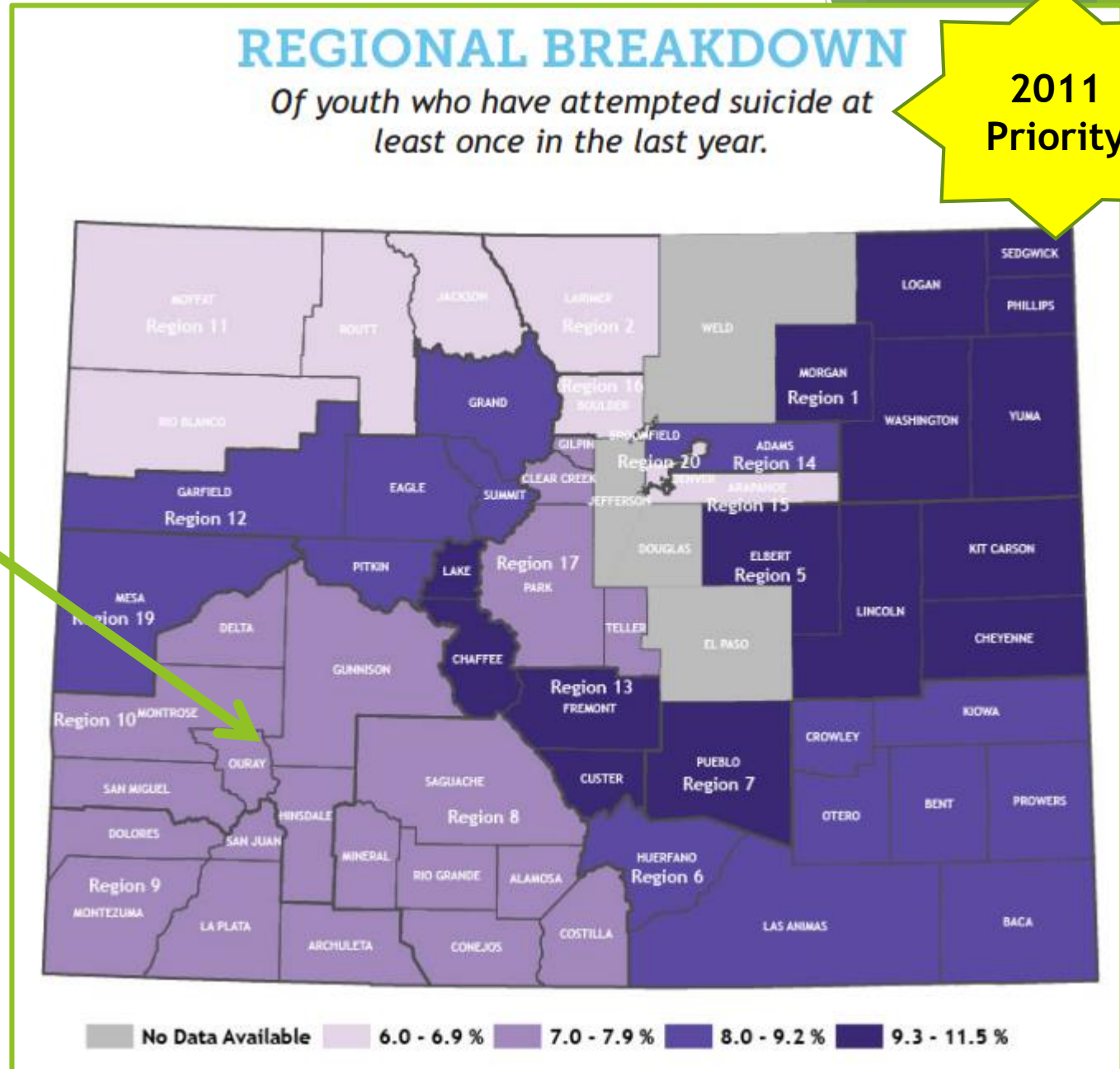
Data: CO Health Information Dataset, Death Query, Death Certificate

Mental Health

6.9% of youth have attempted suicide at least once in the last year Region 10, 2015

5.1% Region 10, 2013

Data: Healthy Kids CO Survey



Substance Abuse

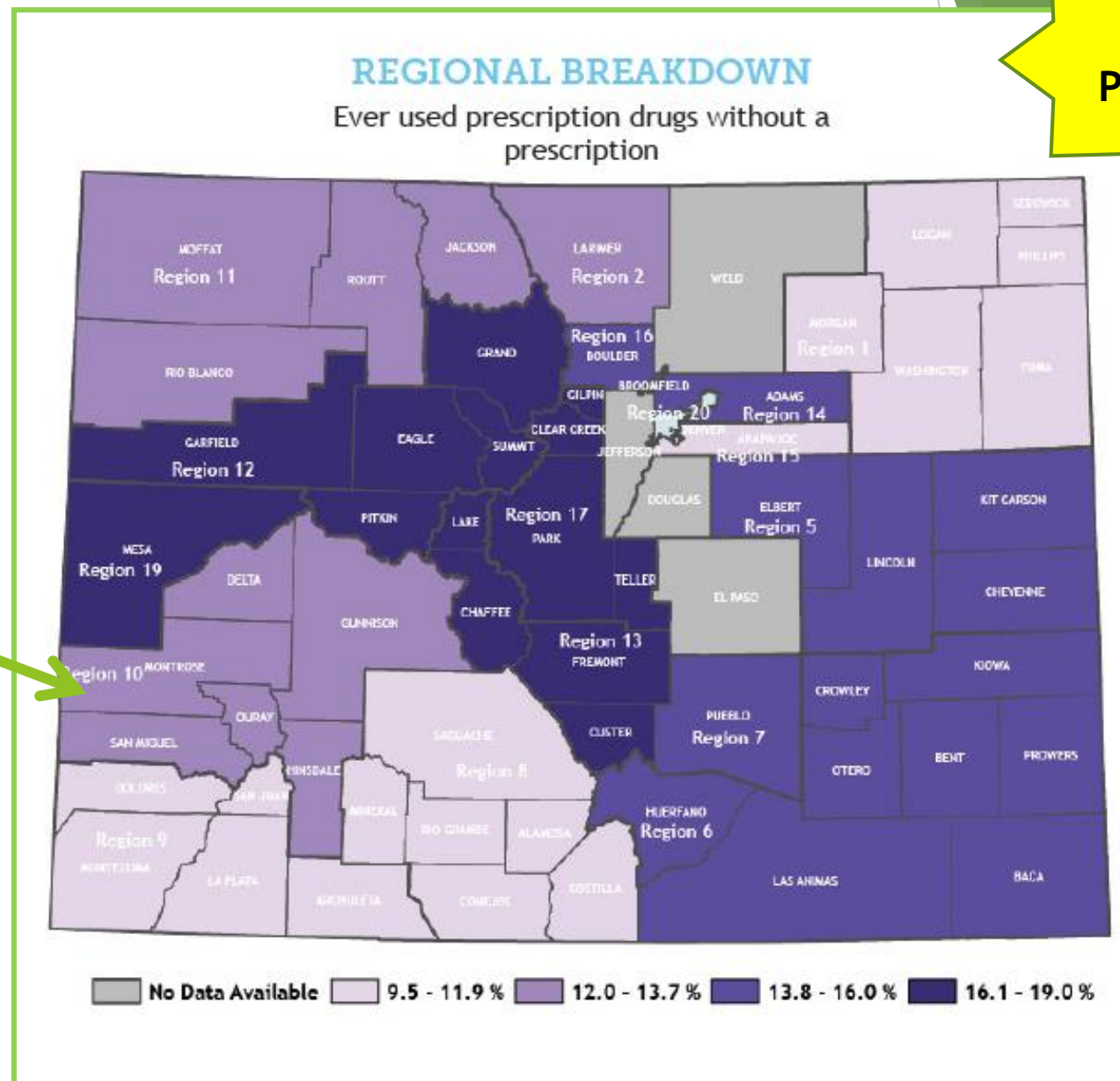
High School: Ever used
prescription drugs
without a prescription

13.7% Region 10, 2015

15.2% Region 10, 2013

Data: Healthy Kids CO Survey

**2011
Priority**



Water Quality



10% of Region 10
Residents drinking
water= Private Well



10,000
Residents primary
drinking water sources
is unregulated

**2011
Priority**

Data: BRFSS

Water Quality

2011
Priority

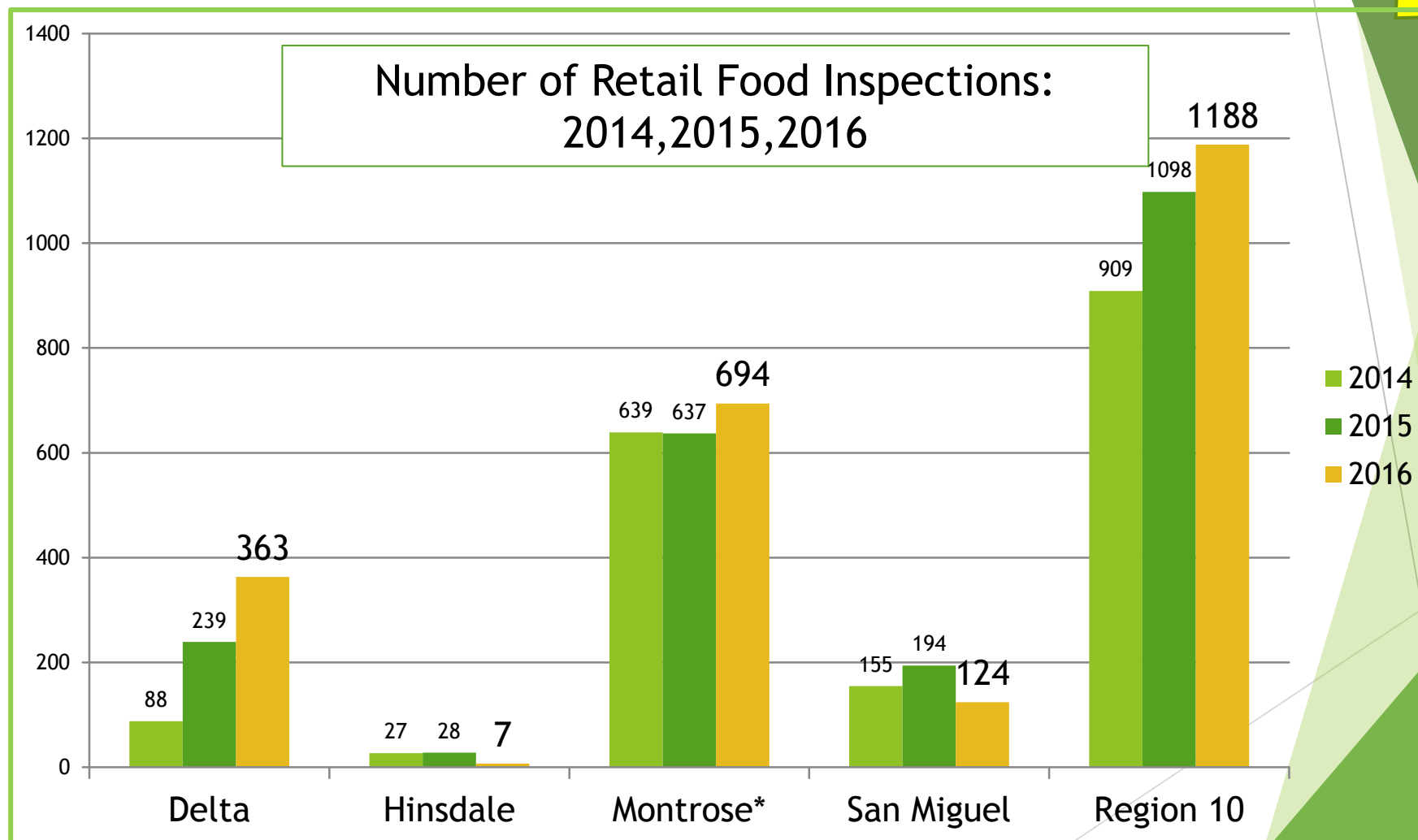
Region 10 Private Water Wells 1990-2013

	Delta	Gunnison	Hinsdale	Montrose	Ouray	San Miguel
Well Permits	1540	3752	613	1248	496	1212
Total Number of Samples	227	72	15	34	20	5
Percent Sampled	14.7	1.9	2.4	2.7	4	0.4

Data: CO Environmental Public Health Tracking

Food Safety

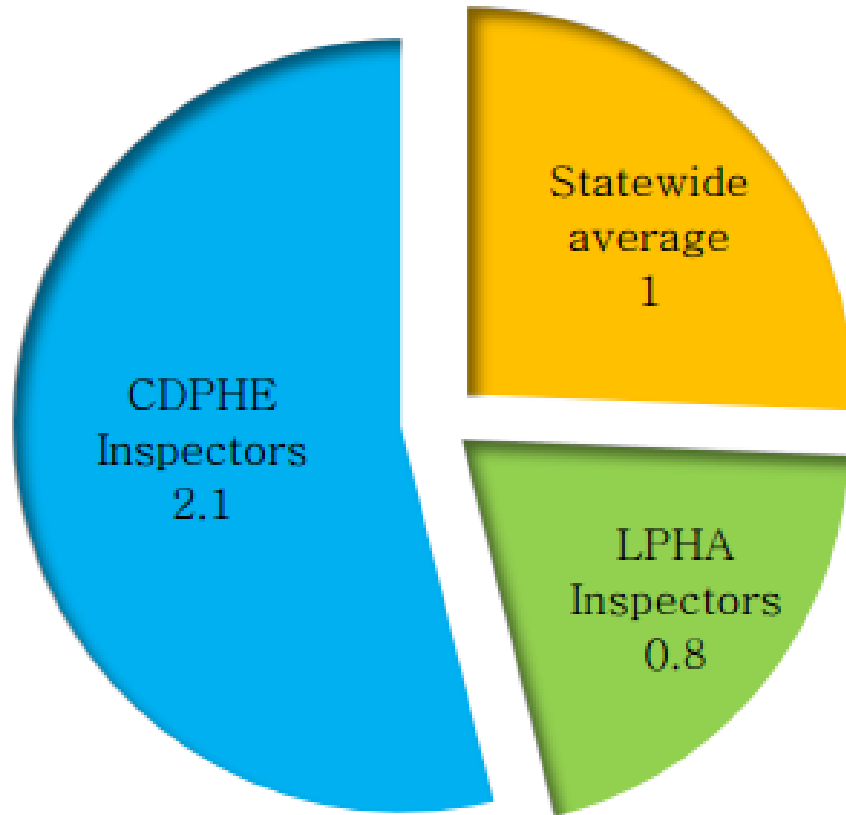
2011
Priority



Data: CO Environmental Public Health Tracking, CDPHE, Division of Envs. Health & Sustainability

Food Safety

2011
Priority

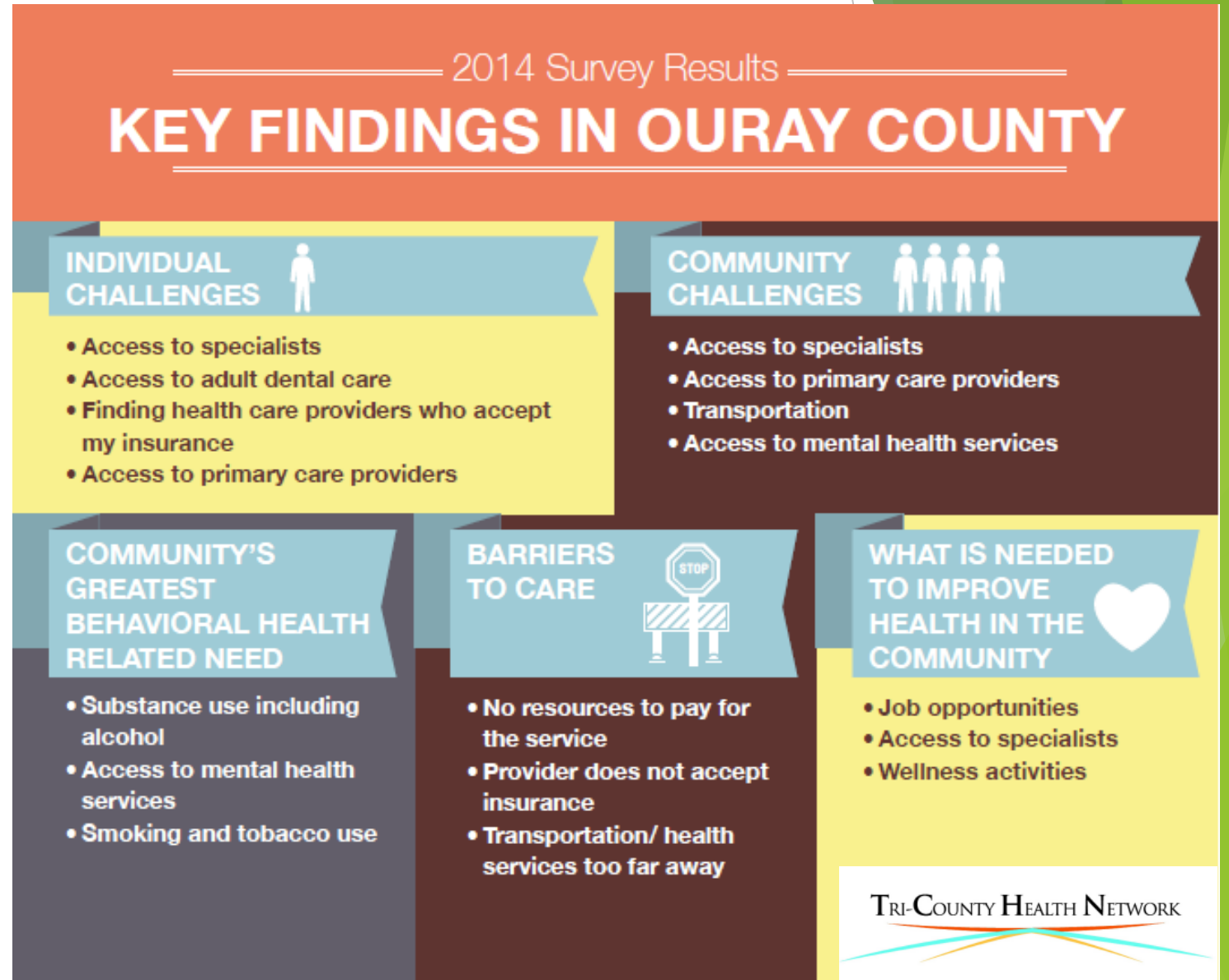


Food-Borne Illness
Critical Violations per
Retail Food Inspection**

** For jurisdictions using CDPHE's data system for SFY

Access to Health

- ▶ Primary Care
- ▶ Specialists
- ▶ Dentists
- ▶ Mental Health
- ▶ Uninsured/Insurance
- ▶ System Navigation

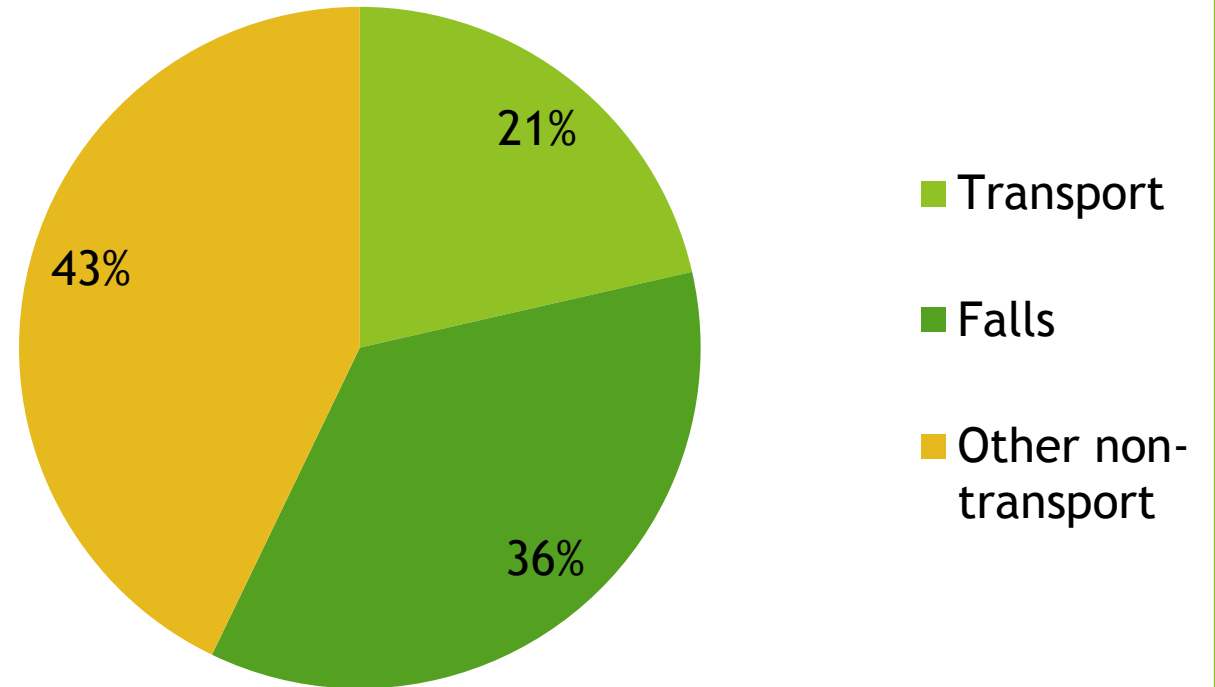


Injury

3rd Leading Cause of Death
1st Leading Cause of Years of
Potential Life Lost

Falls highest rate of injury
hospitalizations 2011-2014

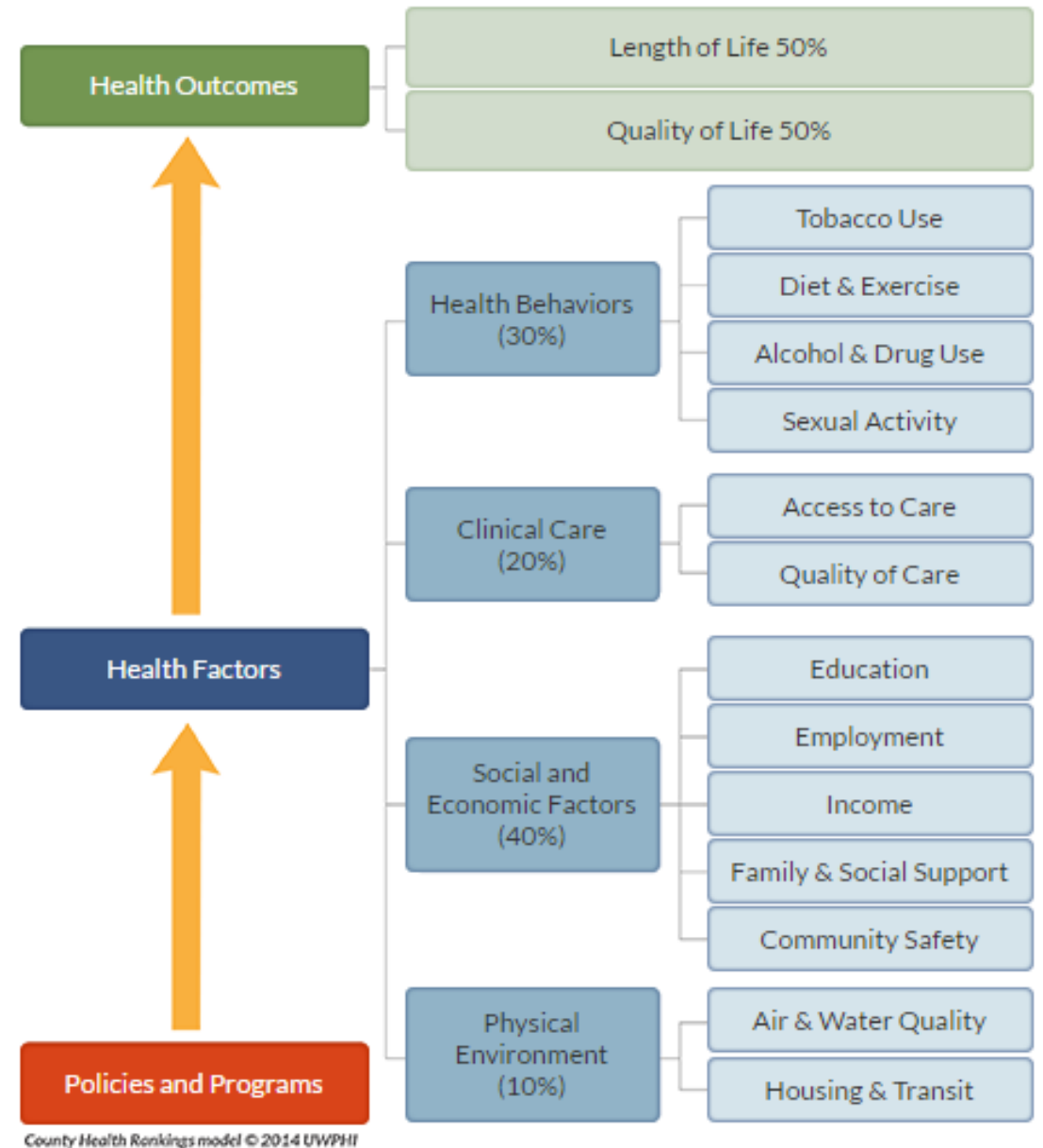
Unintentional Injury Deaths, 2011-2014



Overall Health: County Health Rankings

- ▶ Compare health across state of CO
- ▶ Health Outcomes
- ▶ Health Factors

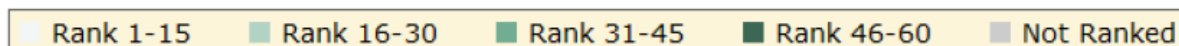
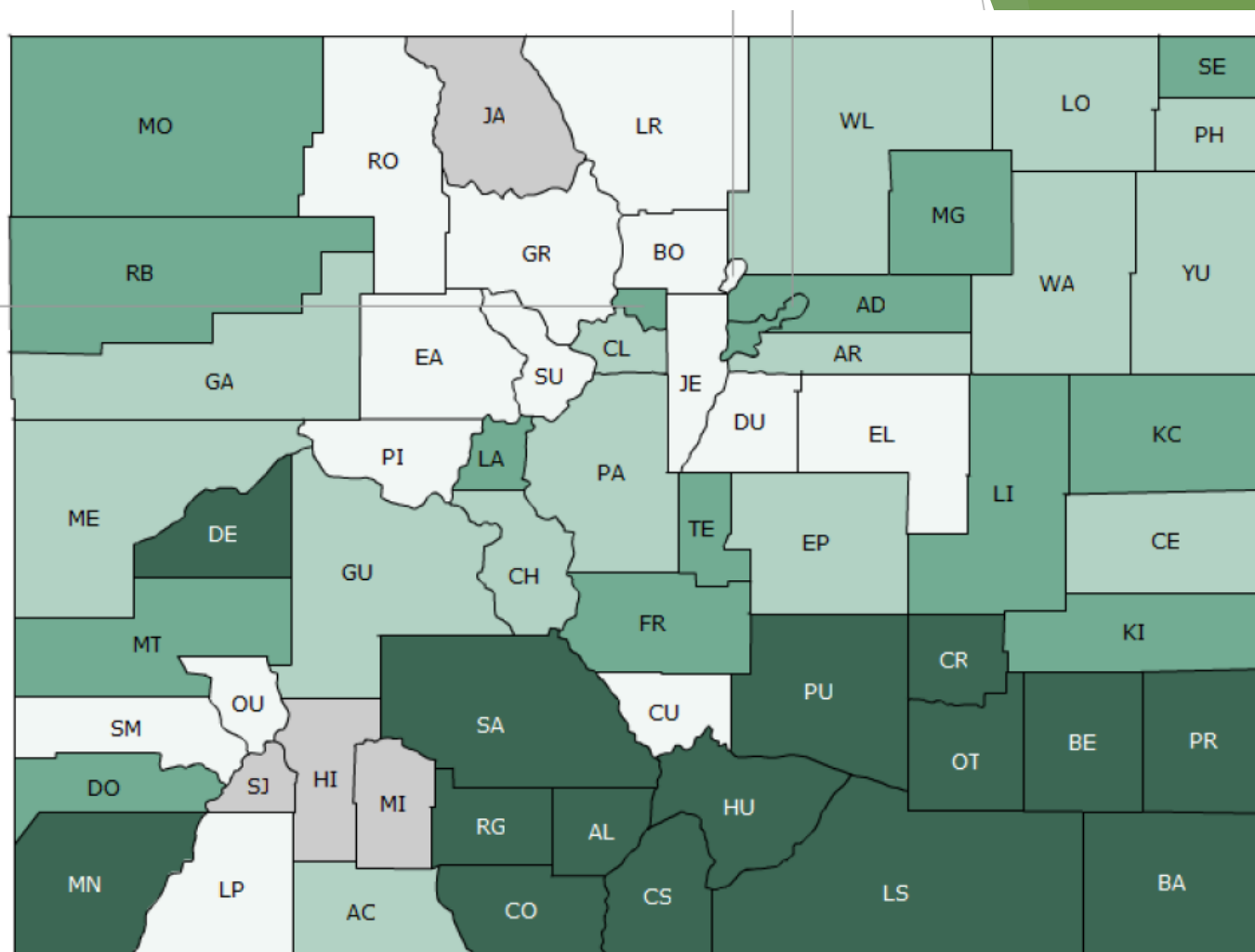
www.countyhealthrankings.org



Ouray County

12 of 60 counties

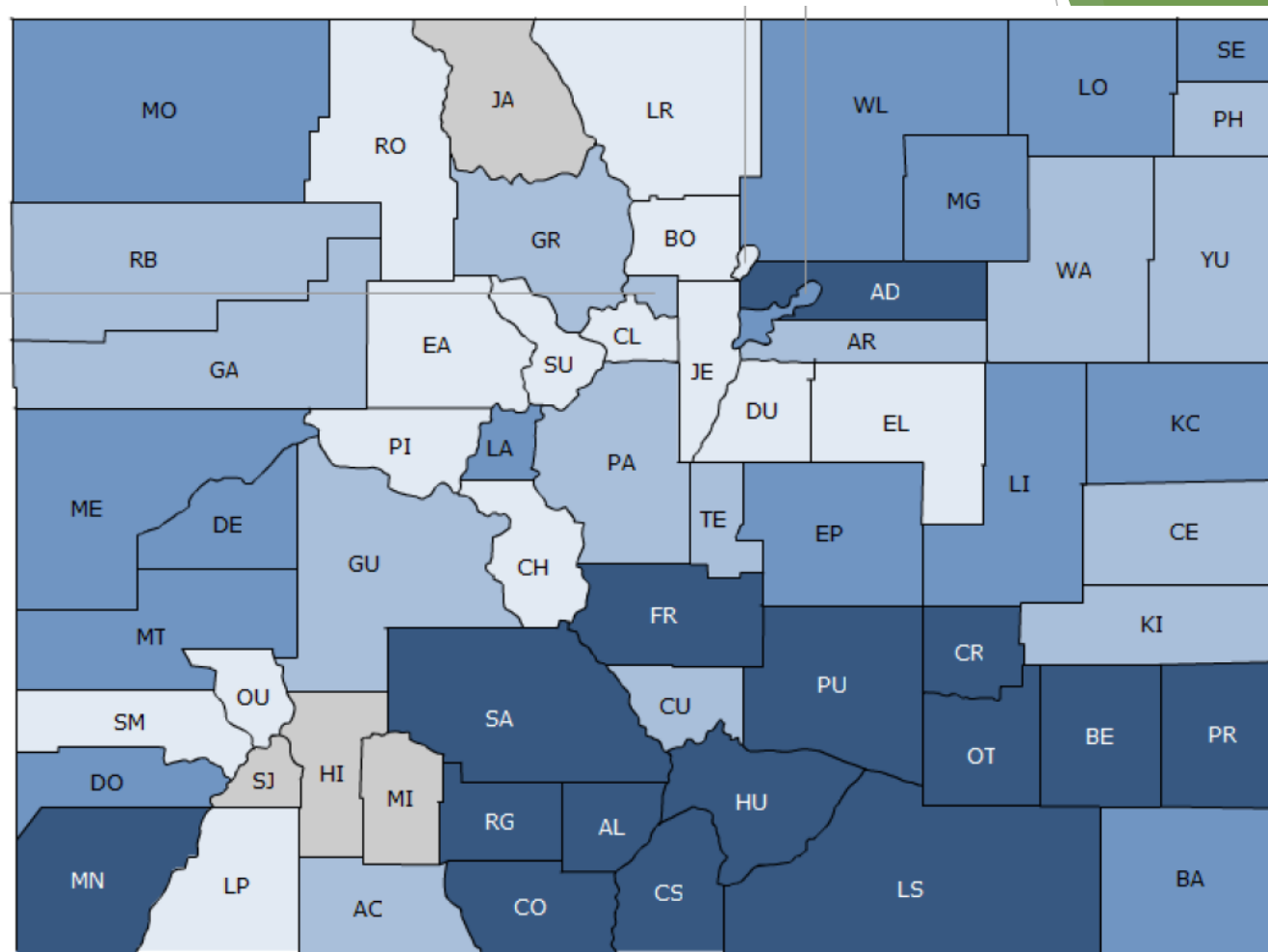
- ▶ Length of life (9)
- ▶ Quality of life (22)



Health Factors:

Ouray County 5 of 60 counties

- Health Behaviors (4)
- Clinical Care (11)
- Social & Economic (12)
- Physical Environment (5)



Rank 1-15 Rank 16-30 Rank 31-45 Rank 46-60 Not Ranked

Strengths

- ▶ High level of education
- ▶ Low poverty rate
- ▶ Length & Quality of Life
- ▶ Health Behaviors
 - ▶ Smoking rates
 - ▶ Teen Birth

Opportunities

- ▶ Healthy Eating Active Living
- ▶ Mental Health/Substance Abuse
- ▶ Private Well Water
- ▶ Food Safety
- ▶ Access to Health
- ▶ Injury
- ▶ Oral Health

Community Survey

DO YOU VALUE HEALTH?

**More
Info
641-0209**

**Take the
Community
Health
Survey!**

Anonymous

www.surveymonkey.com/r/coloradoregion10survey

Prioritization Process

- ▶ Overview of process
- ▶ What we will do with results

Prioritization Process

- ▶ Small Groups
- ▶ Independent Idea Generation
- ▶ Round Robin: list top health issue
- ▶ Clarify
- ▶ Rank on index Cards

What are the top 5 health concerns in Ouray County?

Step 1 (5 min.)

Idea Generation

- ▶ Break into small groups, sit in circle
- ▶ Individually, take a few minutes to list your ideas on a worksheet
- ▶ Work independently

Step 2 (10 min.)

Small Group Round Robin

- ▶ Get all the ideas out quickly
- ▶ Briefly share 1 top health concern
- ▶ Use key words
- ▶ Next person shares around in a circle
- ▶ Share new ideas
- ▶ Facilitator may ask clarifying questions

What are the top 5 health concerns in Ouray County?

Step 3 (10 min.)

Clarify

- ▶ Does an item need clarifying?
- ▶ Agree with logic or relative importance?
- ▶ Group items together?

Step 4 (10 min.)

Rank

- ▶ Individually rank each item
- ▶ Use index cards to give a rank

What are the top 5 health concerns in Ouray County?

Step 5

Sort and Score

- ▶ Volunteers help read score
- ▶ Take a break while facilitators add up the scores

Step 6

Discuss Results

- ▶ Which got the highest score?
- ▶ Any ties? Which got the most “votes”?
- ▶ Share with other group

“#2” Write the corresponding item number in the upper left corner

Write out your chosen item from the list:
“Mental Health for Families”

#2
Item
Number

Mental Health in Families

#5
Ranking
Number

We will use the scale 1-5:

1 = least important 5 = most important

Out of your 5 ideas, pick the one item that you think is *MOST* important.

Write 5 in the lower right hand corner of the card.

Next, pick the one item of the remaining 4 that you think is the least important compared to the others.

Write 1 in the lower right hand corner.

#3
Item
Number

Health Eating Active Living

#4
Ranking
Number

We will use the scale 1-5:

1 = least important 5 = most important

Next, pick one item of the remaining 3 that you think is the most important of those remaining and write 4 in the lower right hand corner.

Next, pick the one item of the remaining 2 that you think is the least important and write 2 in the lower right hand corner.

What are the top 5 health concerns in Ouray County?

Step 5

Sort and Score

- ▶ Volunteers help read score
- ▶ Take a break while facilitators add up the scores

Step 6

Discuss Results

- ▶ Which got the highest score?
- ▶ Any ties? Which got the most “votes”?
- ▶ Share with other group

Next Steps

- ✓ Systematically review and combined the list to come up with one set of top 5 recommendations to fairly and equitably represent the community's input from this process.
- ✓ Share results with Stakeholders
- ✓ Share results with WCPHP Core Planning Team and hospitals: Prioritizations determined for regional Public Health process and hospitals
- ✓ Stakeholders invited to participate in planning process in 2017

The background features abstract, overlapping green geometric shapes, primarily triangles and polygons, in various shades of green, creating a modern and dynamic design.

~Thank You~

mwacker@gunnisoncounty.org

kmelland@gunnisoncounty.org