

# Montrose County Stakeholder Meeting

Kristin D. Pulatie, Director Health & Human Services, JD MPH

Margaret Wacker, WCPHP Coordinator, MPH

Katherine Melland, WCPHP Health Planner, MPH



November 15th, 2016

# Agenda

11:00-1:30 pm

- ▶ Welcome and Introductions
- ▶ WCPHP Overview, PHIP Update
- ▶ Lunch
- ▶ Montrose County Presentation
- ▶ Prioritization Process
- ▶ Discussion

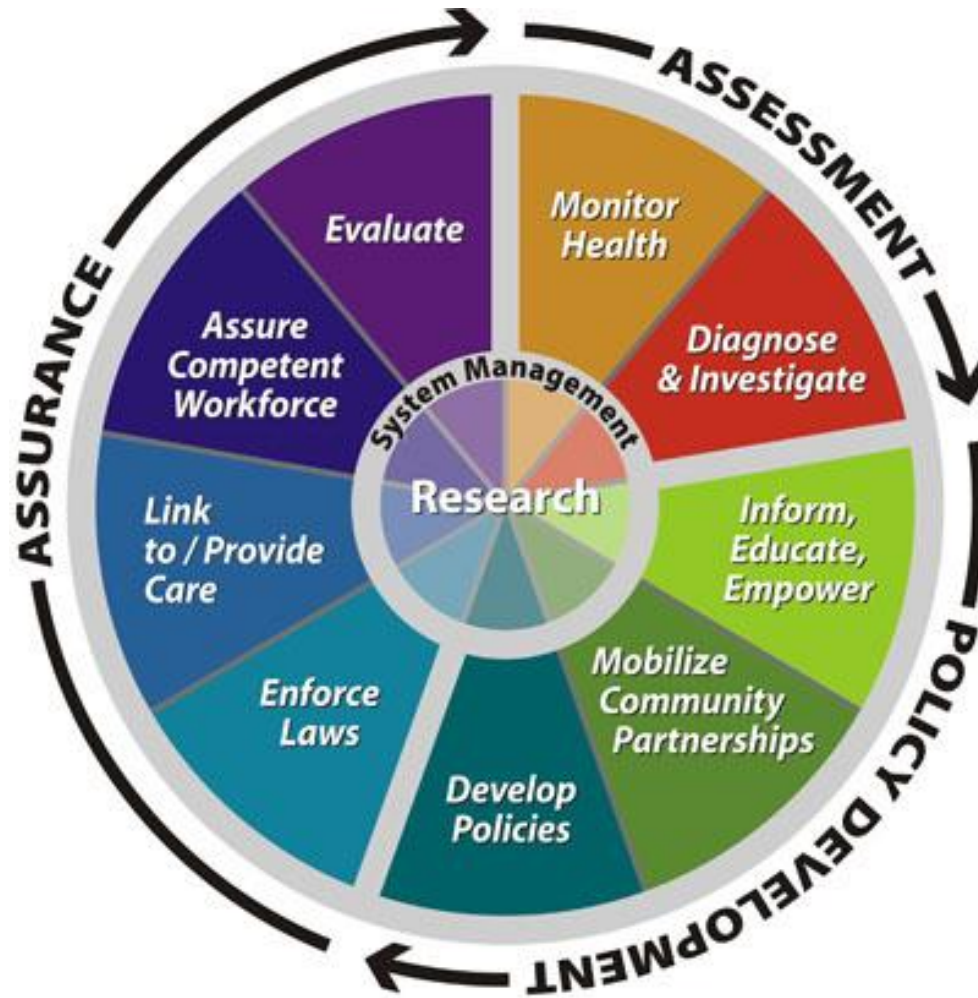


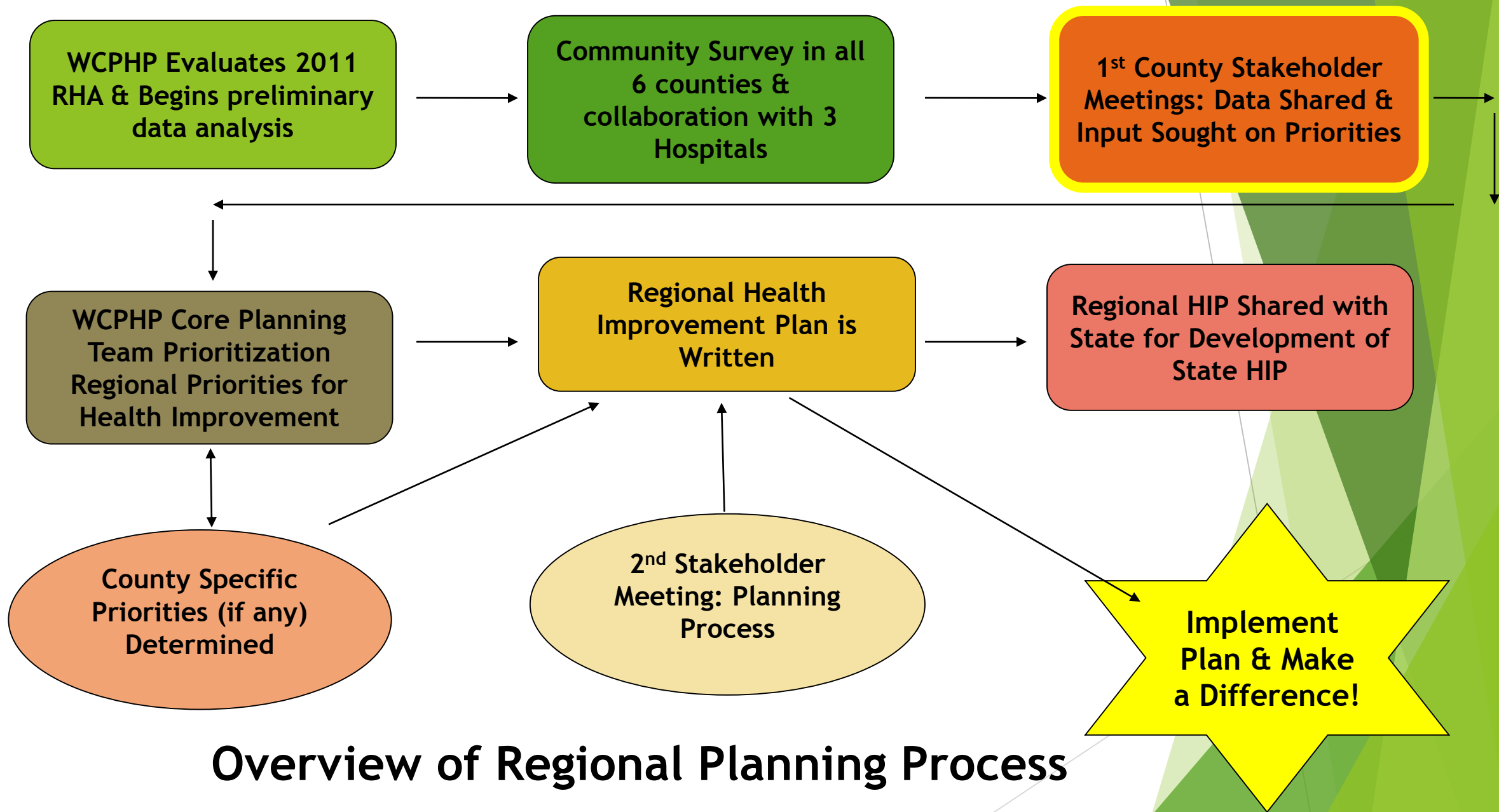
► **Regional Collaboration:**

**Delta, Gunnison, Hinsdale, Montrose, Ouray  
and San Miguel Counties**

- **State model**
- **Larger Impact**
- **Combined expertise**

# Public Health Core Services

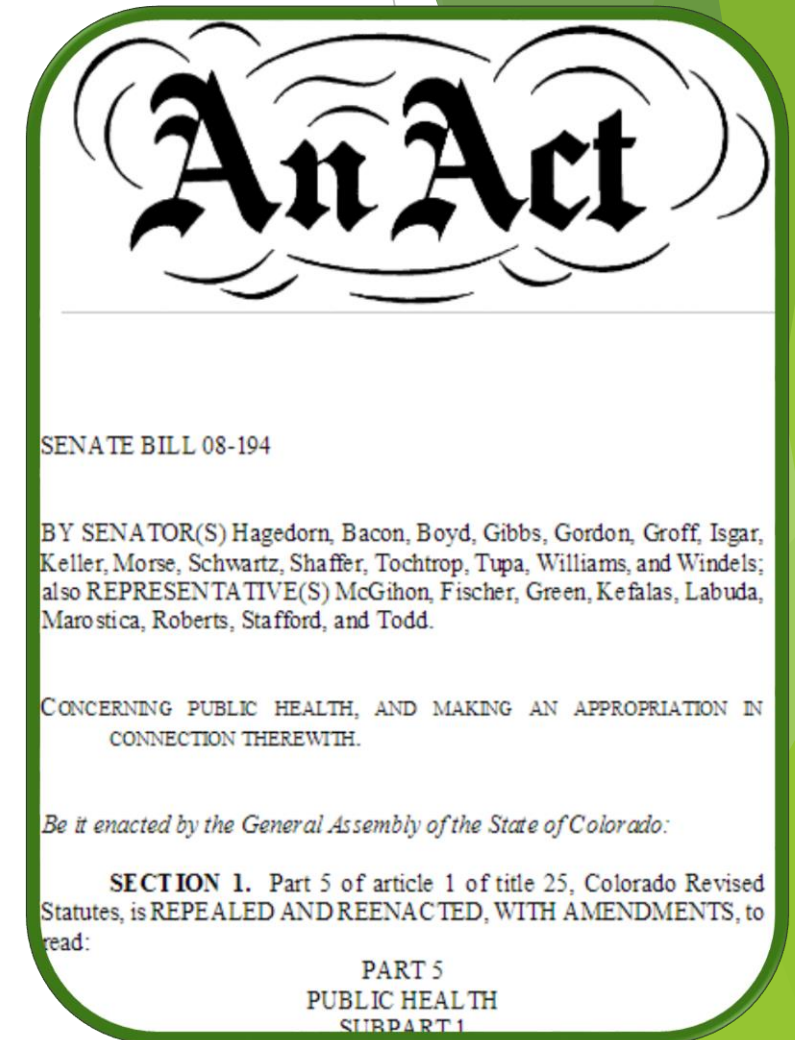




## Overview of Regional Planning Process

# Regional Health Assessment: 2011 & 2016

- ▶ Healthy Eating Active Living (Obesity Prevention)
- ▶ Improve Well Water Quality
- ▶ Mental Health/Substance Abuse
- ▶ Food Safety



**Success!**  
Thank you for  
your input and  
support.



1. Worksite Wellness
2. Well Water Quality
3. Mental Health & Substance Abuse

# Montrose County Demographics



## Race or Ethnicity:

**91.7% White**  
**20.1% Hispanic** 2014



## High School Diploma:

**86.9%** 2014  
**90.4%** State

## English Language Learner:

**15.1%** 2015  
**14.2%** State

## Unemployment Rate:

**4.4%** 2015  
**3.5%** State

Data: American Community Survey, 2010-2014  
Kids Count 2016, Bureau of Labor Statistics, Local Area Unemployment



# Montrose County Demographics



## Median Household Income:

**\$44,885** 2014  
**\$59,448** State

## Persons in Poverty:

**15.5%** 2014  
**11.5%** State



## Self Sufficiency Standard: (2 adults, 2 children)

**\$54,026** 2015  
**223%** of federal poverty level

## School Aged Children in Poverty:

**21.4%** 2014  
**14.9%** State

Data: American Community Survey, 2010-2014  
US Census Small Area Income & Poverty Estimates (SAIPE)  
University of Washington, Center for Women's Welfare

# Montrose County Demographics



Occupied Housing  
Stock:

**16,815** 2014

➤ **70.1% owned**

➤ **29.9% rented**

Healthy Housing:

**Zone 1= High Radon Potential**

**35.8% w/ Substandard Conditions**

Data: American Community Survey, 2010-2014, EPA Map of Radon Zones

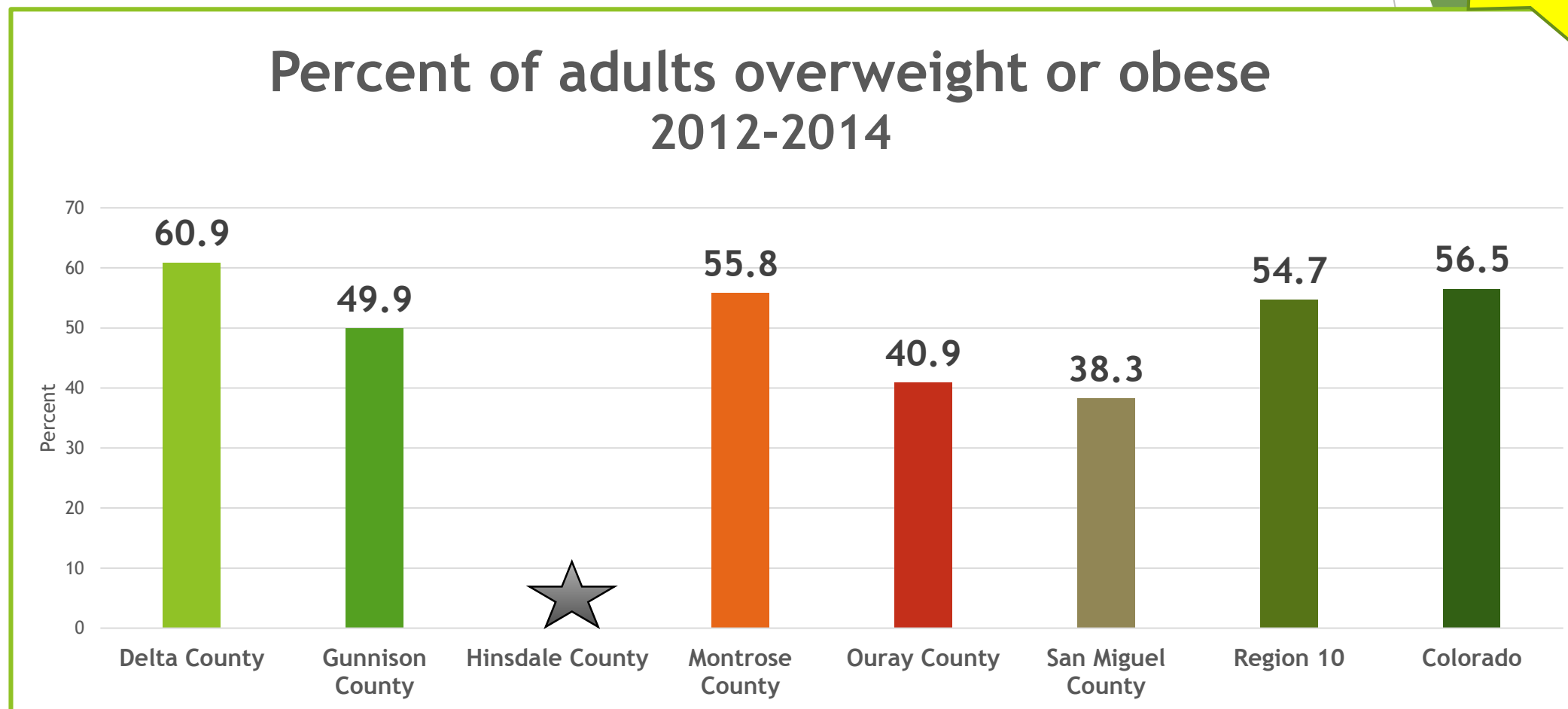
# Regional Health Assessment 2011

## Priority Area Update

- ▶ Regional level data
- ▶ Key Outcome Indicators
  - ▶ Population Health Outcomes= difficult to move the needle in 5 years
- ▶ Improvements with new resources, staff, capacity of WCPHP

# Heathy Eating Active Living

2011  
Priority



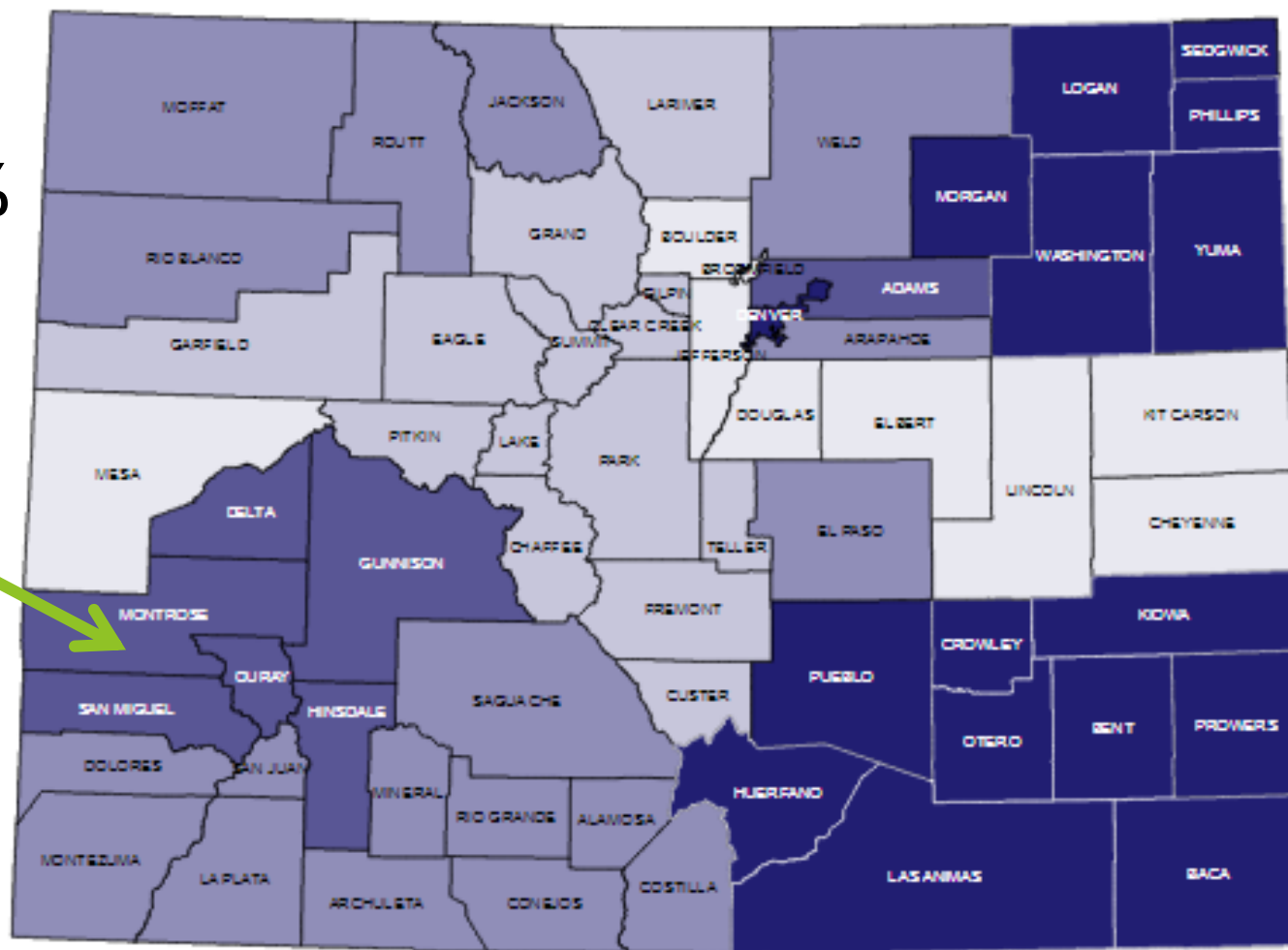
Data: Behavioral Risk Factor Surveillance System (BRFSS)

# Heathy Eating Active Living

## 2011 Priority

**Region 10: 29-31%**  
Percent of Children  
Age 2-14 who are  
overweight or obese

**32%** Montrose County



16% to 22% 23% to 25% 26% to 28% 29% to 31% 32% to 40%

Data: CO Child Health Survey,  
Health Statistic Region

# Mental Health

2011  
Priority

Table 6. Suicide Age-Adjusted Death Rate per 100,000 People 5 Year Averages					Number of Suicides
	1995- 1999	2000- 2004	2005- 2009	2010- 2014	2010-2014
DELTA	25.7	23.8	14.9	24.5	37
GUNNISON	21.7	14.5	13.5	15.0	11
HINSDALE	114.6	*	*	*	*
MONTROSE	22.8	20.9	21.8	18.1	41
OURAY	19.7	*	19.0	23.4	5
SAN MIGUEL	28	6.3	13.5	10.2	5

Data: CO Health Information Dataset, Death Query, Death Certificate

# Mental Health

**7.0-7.9%** of youth  
have attempted suicide  
at least once in the last  
year Region 10, 2015



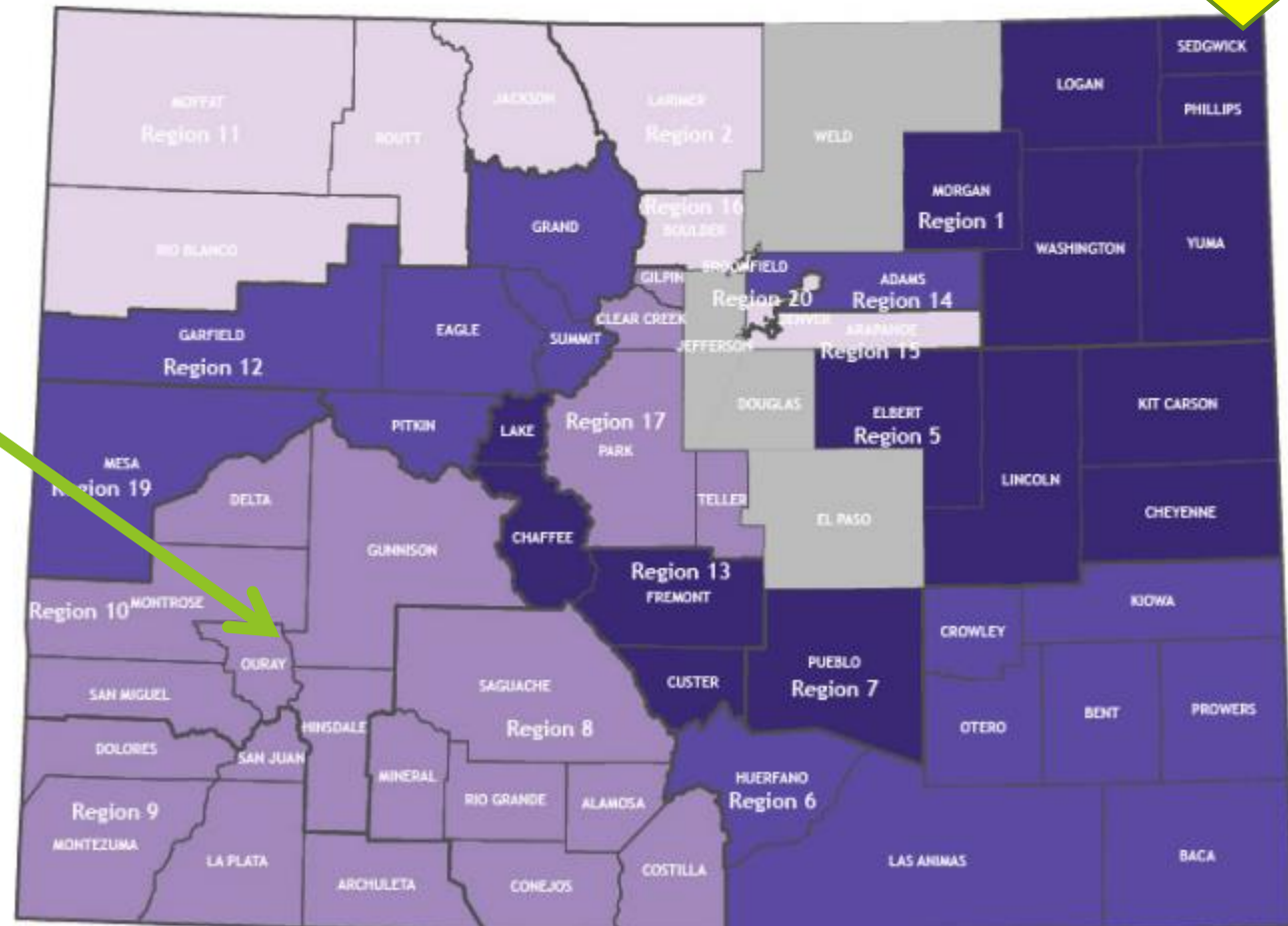
**5.1-5.3%** Region 10, 2013

Data: Healthy Kids CO Survey

## REGIONAL BREAKDOWN

*Of youth who have attempted suicide at  
least once in the last year.*

**2011  
Priority**



■ No Data Available ■ 6.0 - 6.9 % ■ 7.0 - 7.9 % ■ 8.0 - 9.2 % ■ 9.3 - 11.5 %

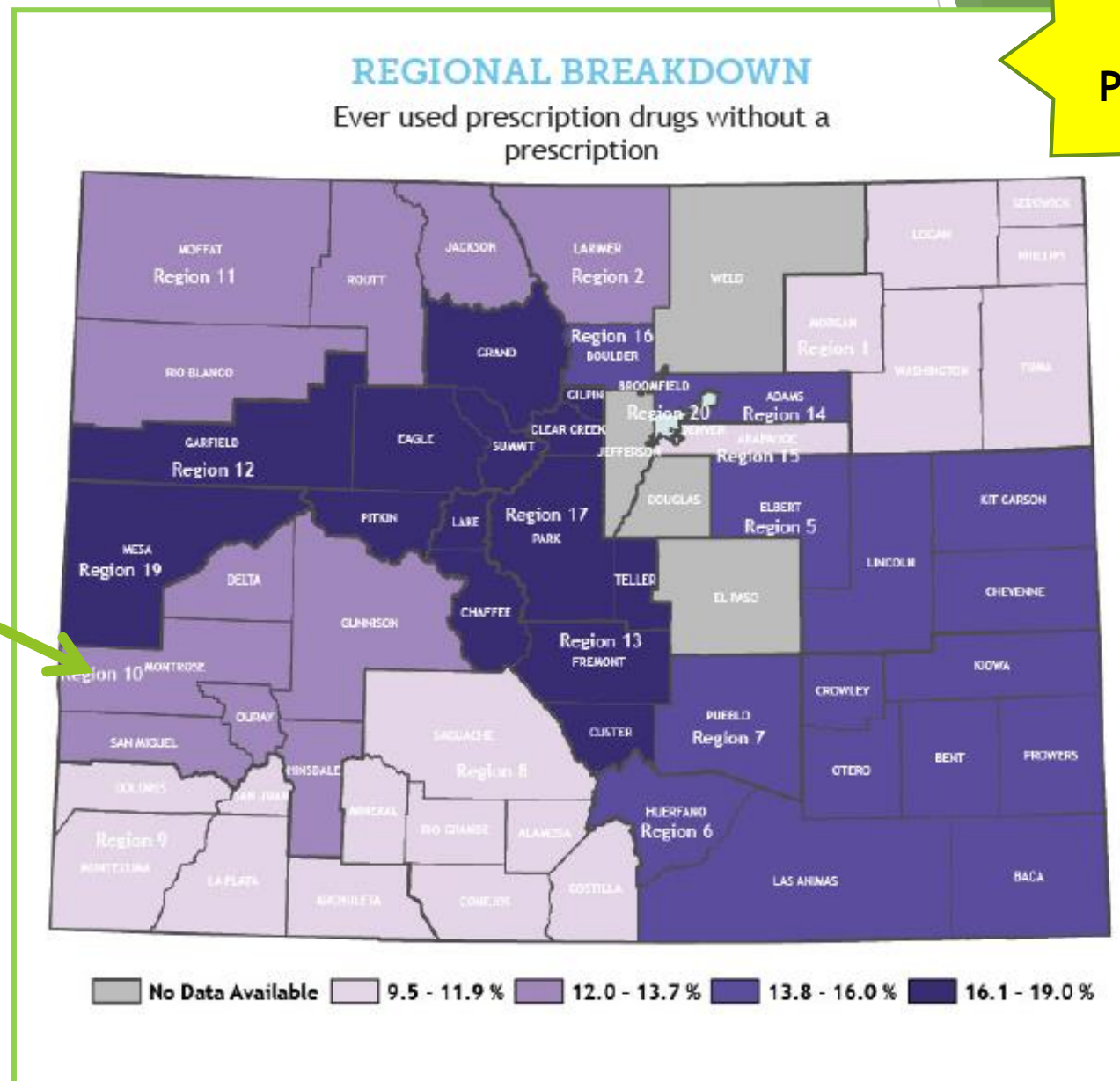


# Substance Abuse

High School: Ever used  
prescription drugs  
without a prescription

**13.7%** Region 10, 2015

**15.2%** Region 10, 2013



**2011  
Priority**



# Well Water Quality



**10%** of Region 10  
Residents drinking  
water= Private Well



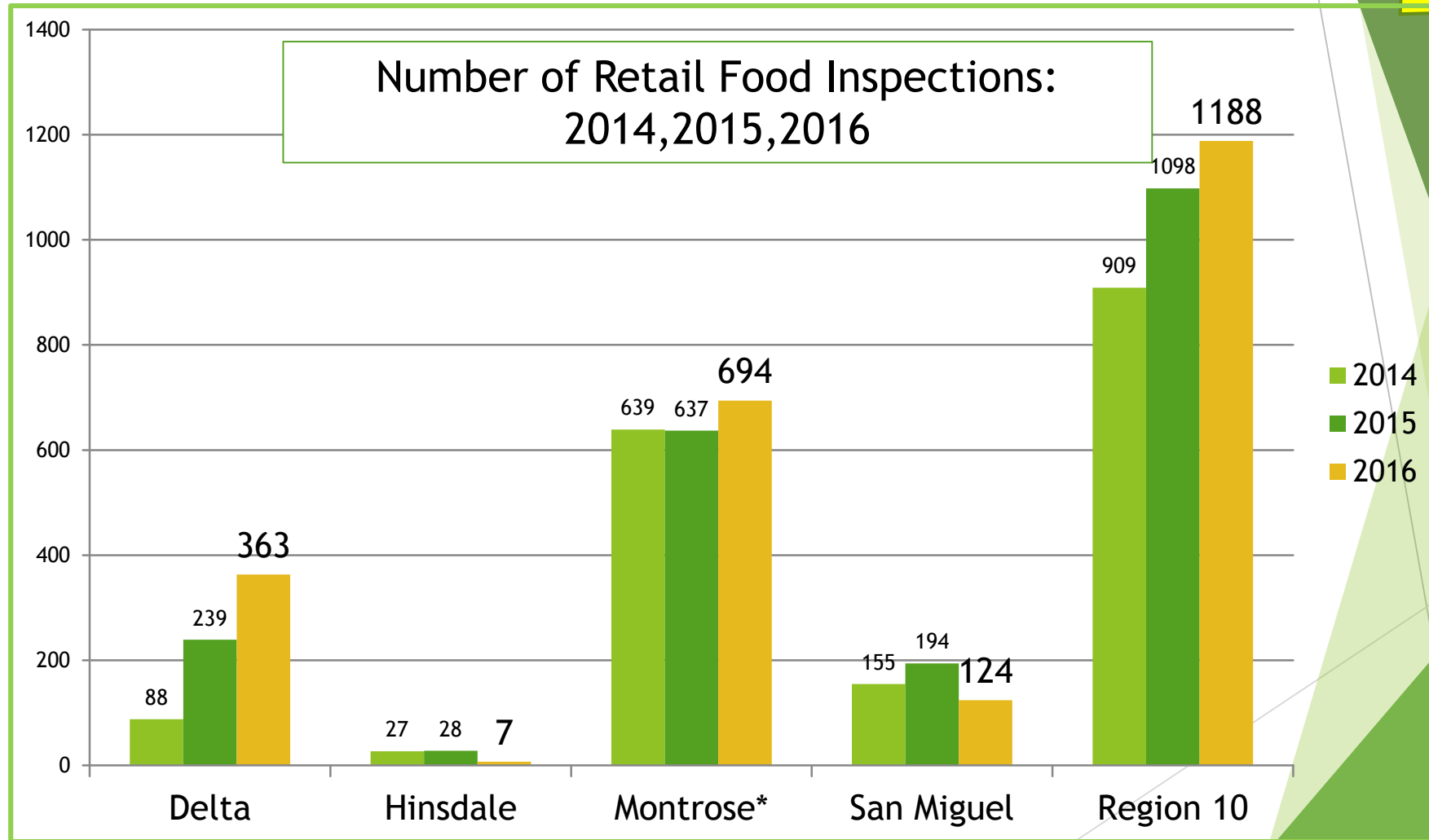
**10,000**  
Residents primary  
drinking water sources  
is unregulated

**2011  
Priority**

Data: BRFSS

# Food Safety

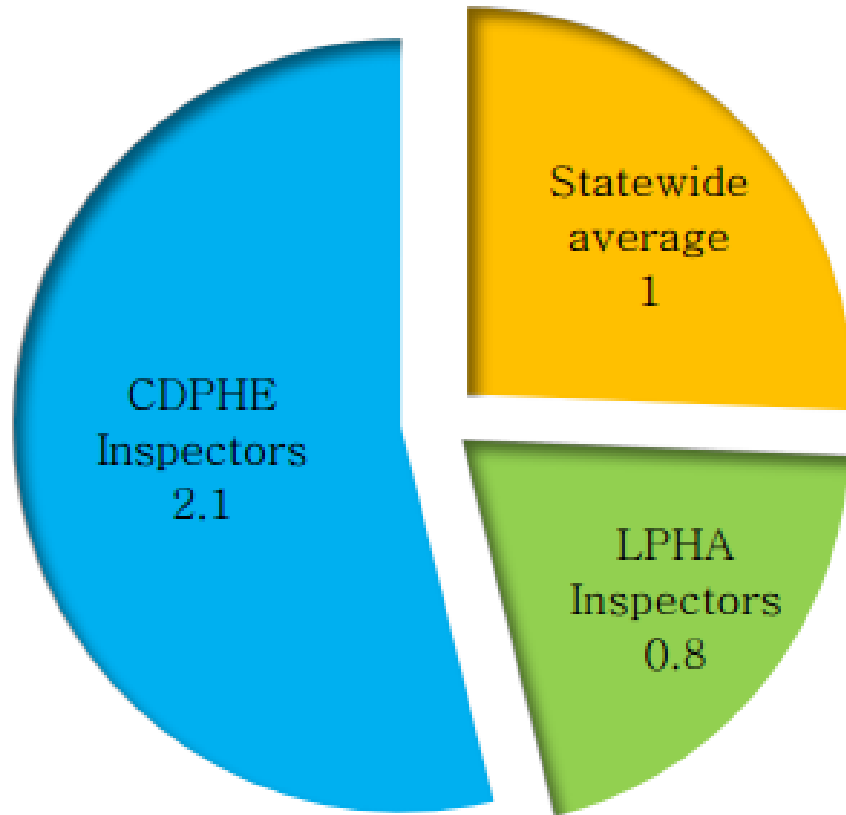
2011  
Priority



Data: CO Environmental Public Health Tracking, CDPHE, Division of Envs. Health & Sustainability

# Food Safety

2011  
Priority

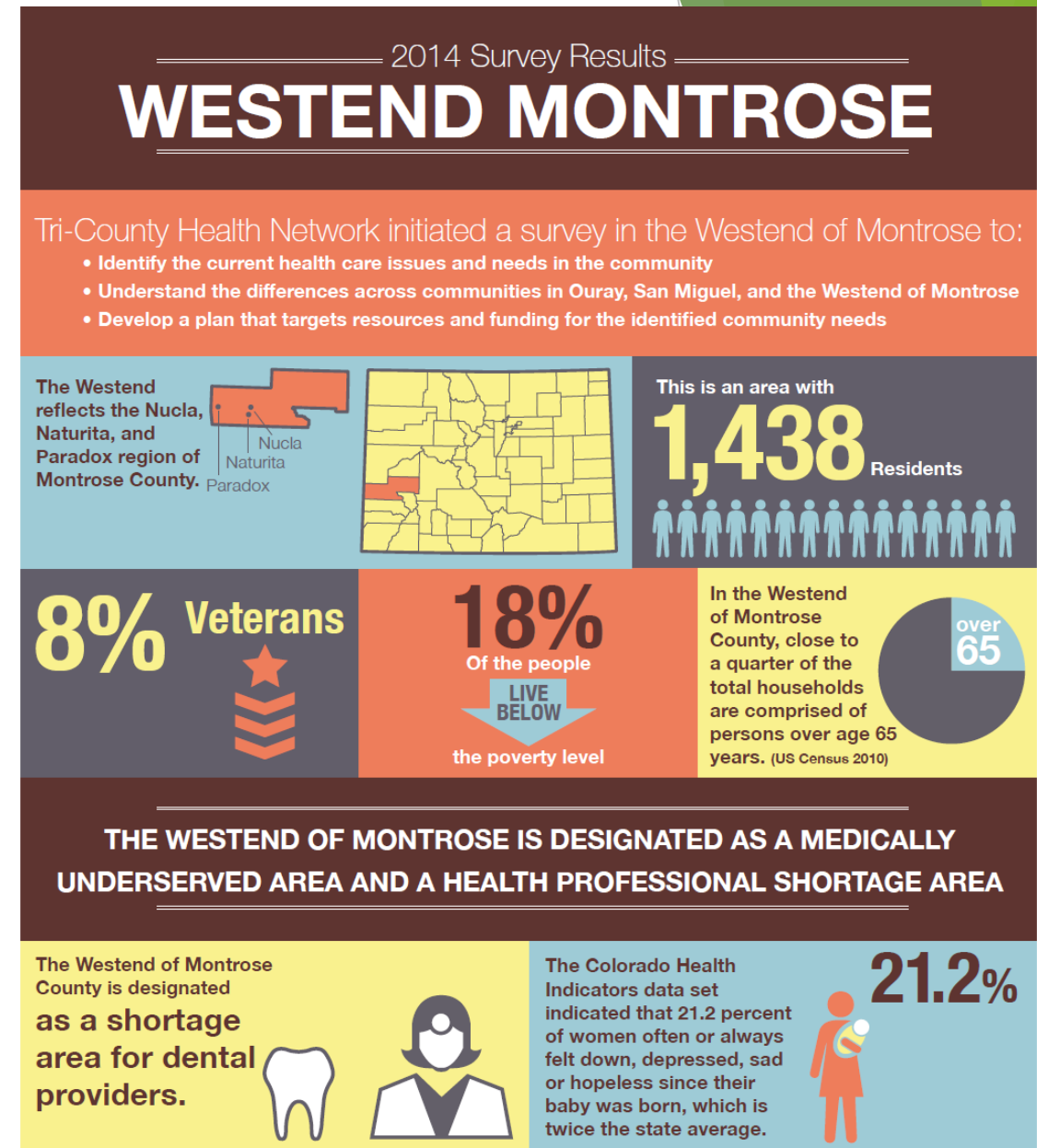


Food-Borne Illness  
Critical Violations per  
Retail Food Inspection\*\*

\*\* For jurisdictions using CDPHE's data system for SFY

# Access to Health

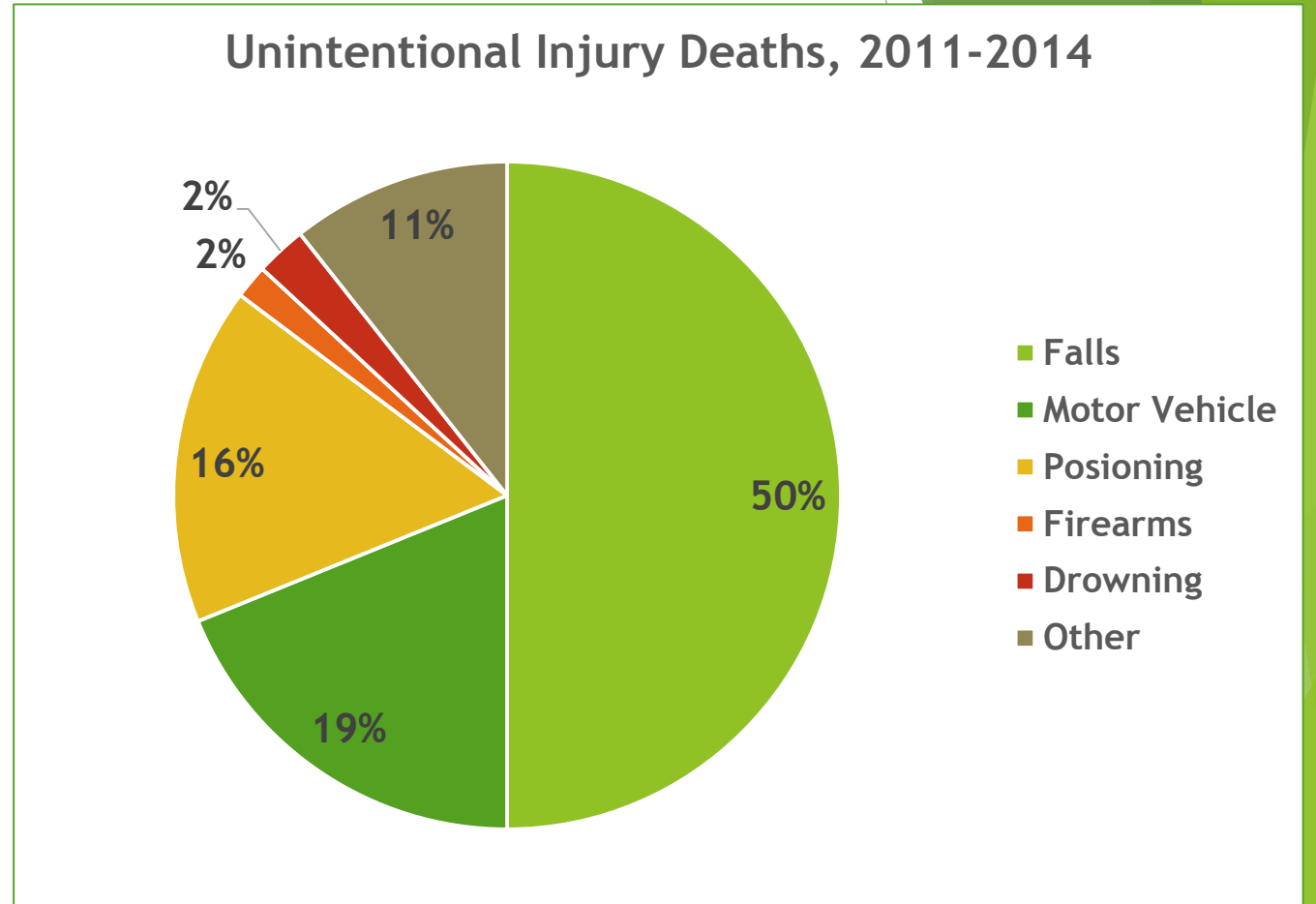
- ▶ Primary Care
- ▶ Specialists
- ▶ Dentists
- ▶ Mental Health/Substance Abuse
- ▶ Uninsured/Cost of Insurance
- ▶ System Navigation



# Injury

4<sup>th</sup> Leading Cause of Death  
1<sup>st</sup> Leading Cause of Years of  
Potential Life Lost

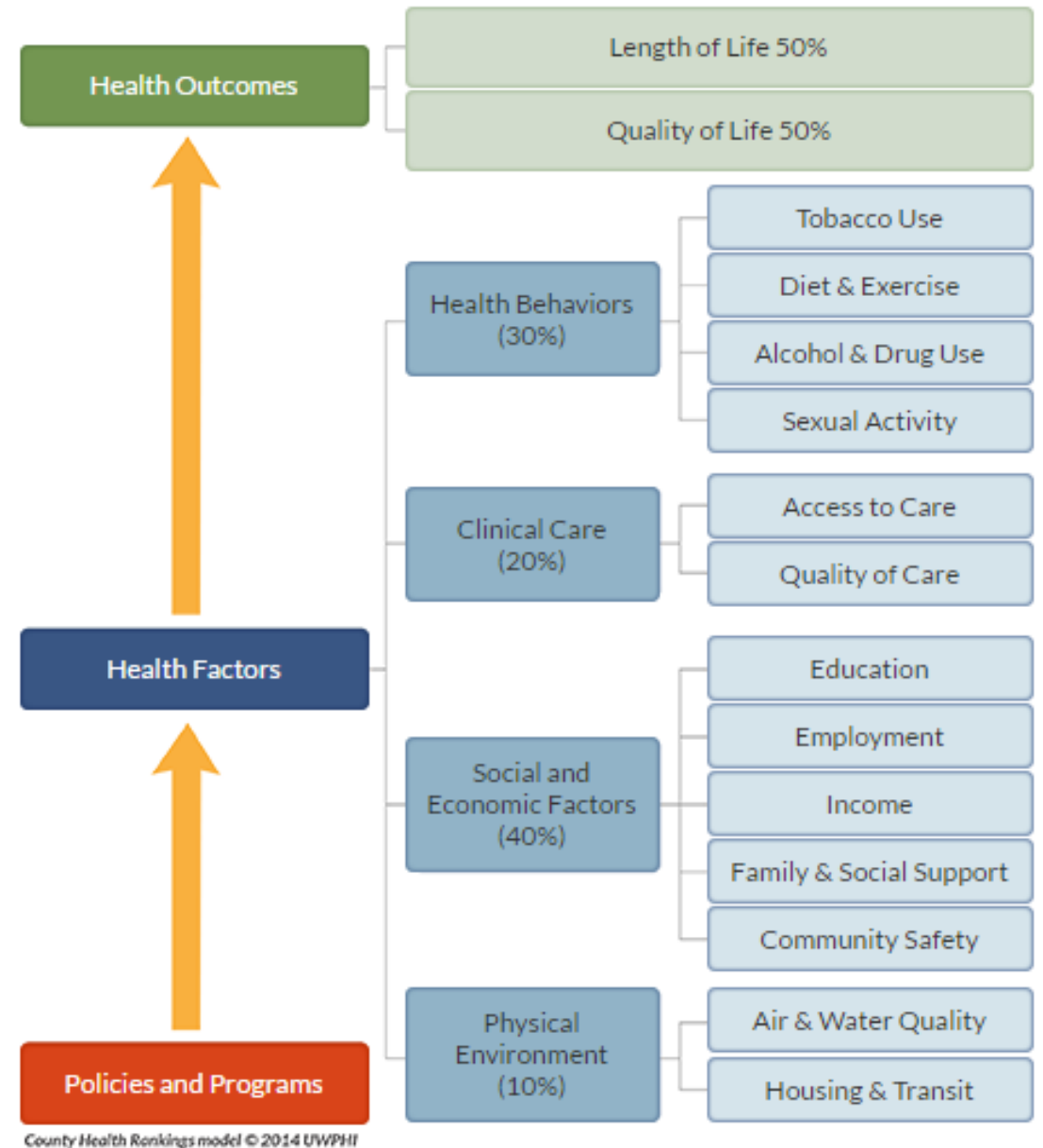
**Falls** highest rate of injury  
hospitalizations 2011-2014



Data: Health Statistics and Vital Records, CO Injury Prevention Statistics, CO Death Dataset

# Overall Health: County Health Rankings

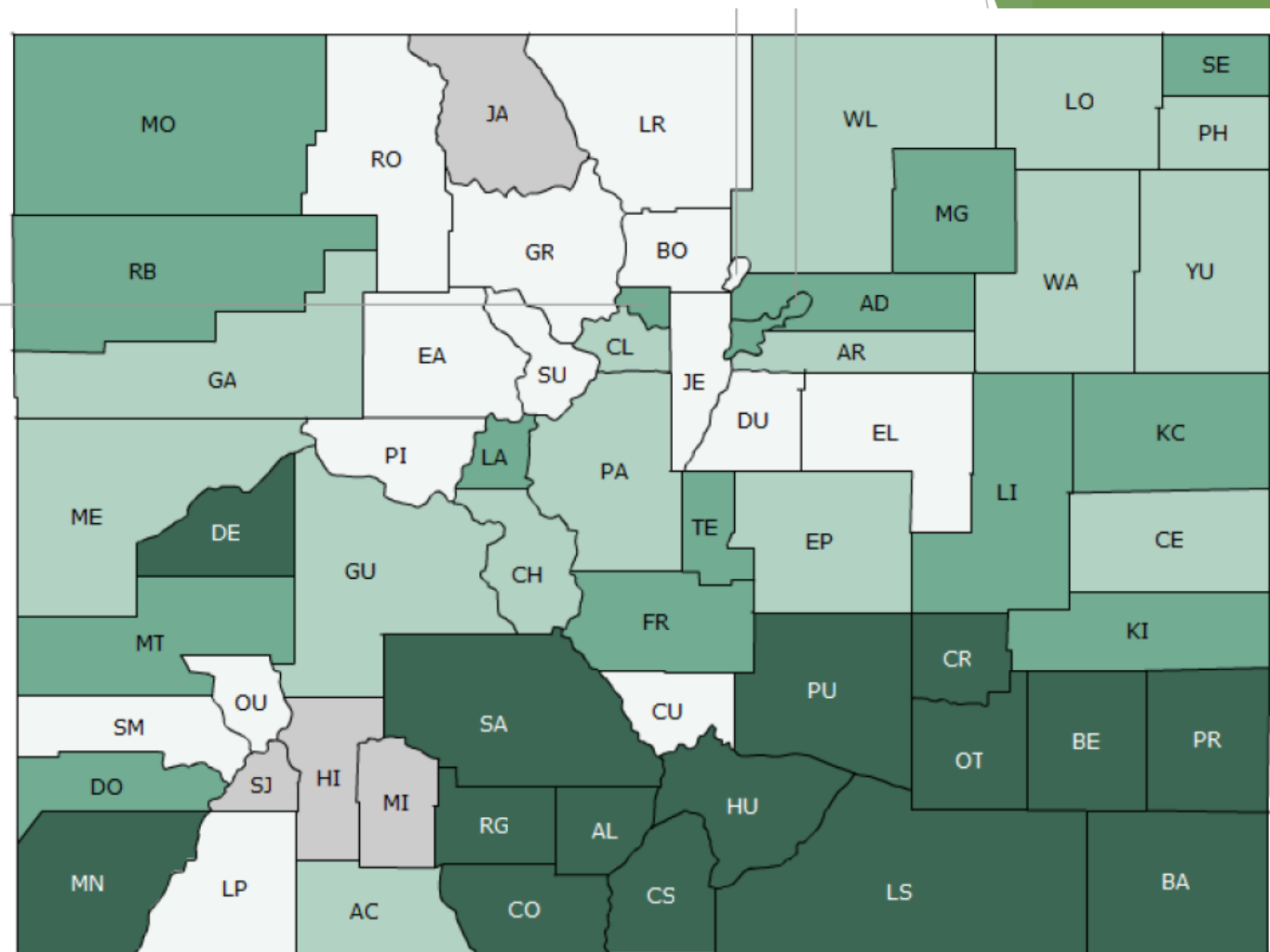
- ▶ Compare health across state of CO
- ▶ Health Outcomes
- ▶ Health Factors



# Health Outcome:

## Montrose County 36 of 60 counties

- Length of life (36)
- Quality of life (38)

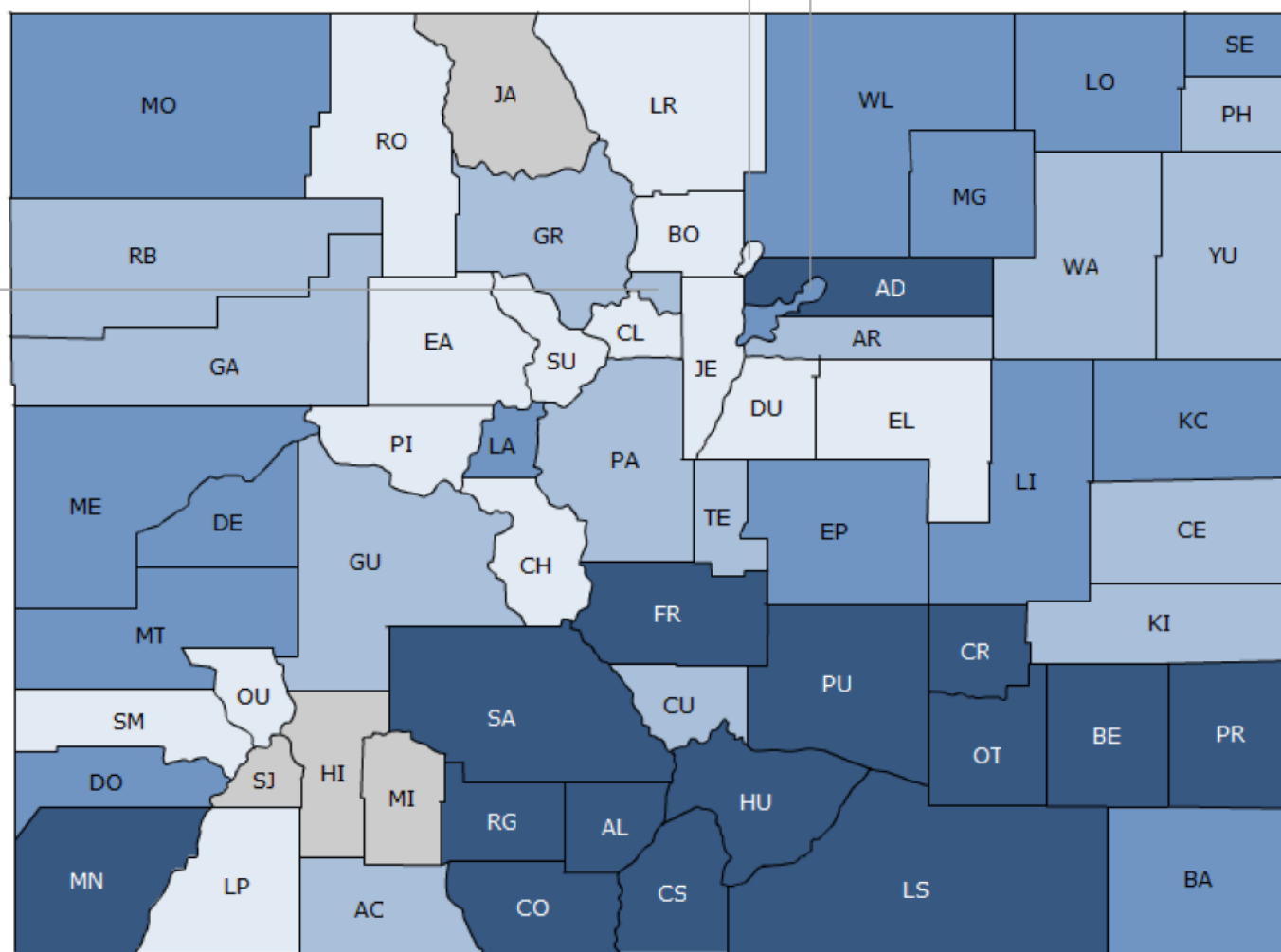


Rank 1-15 Rank 16-30 Rank 31-45 Rank 46-60 Not Ranked

# Health Factors:

## Montrose County 37 of 60 counties

- ▶ Health Behaviors (37)
- ▶ Clinical Care (27)
- ▶ Social & Economic (45)
- ▶ Physical Environment (8)



Rank 1-15 Rank 16-30 Rank 31-45 Rank 46-60 Not Ranked



## Strengths

- ▶ Physically Active
- ▶ Regional Hospital
- ▶ LiveWell Community
- ▶ Local Foods
- ▶ Agriculture and Shopping Hub

## Opportunities

- ▶ Healthy Eating Active Living
- ▶ Mental Health/Substance Abuse
- ▶ Private Well Water
- ▶ Food Safety
- ▶ Access to Health
- ▶ Injury

# Community Survey

**DO YOU VALUE HEALTH?**

**More  
Info  
641-0209**

**Take the  
Community  
Health  
Survey!**

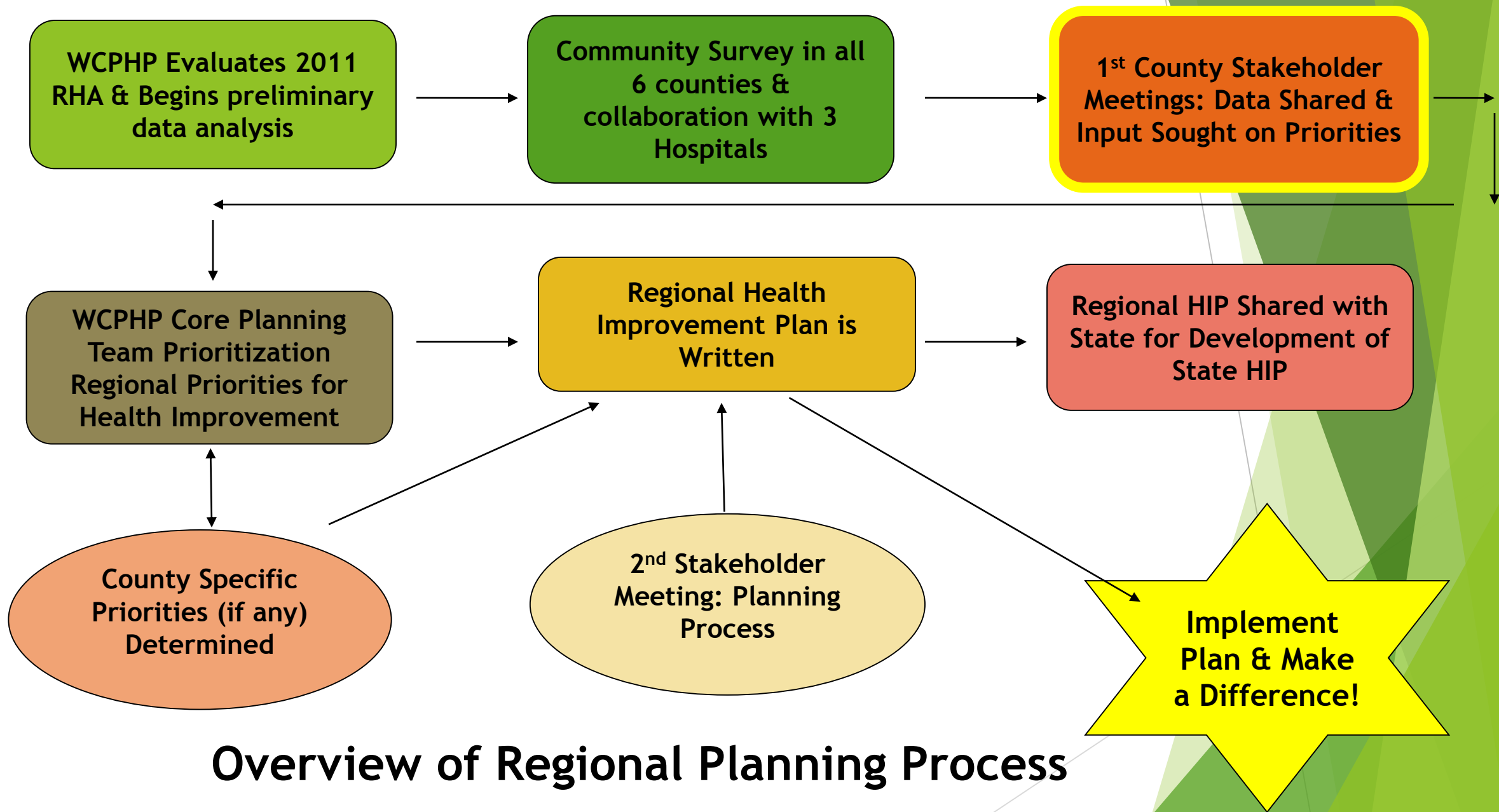
**Anonymous**

[www.surveymonkey.com/r/coloradoregion10survey](http://www.surveymonkey.com/r/coloradoregion10survey)

[www.co.montrose.co.us/107/Health-Human-Services](http://www.co.montrose.co.us/107/Health-Human-Services)

# Prioritization Process

- ▶ Overview of process
- ▶ What we will do with results



## Overview of Regional Planning Process

# Prioritization Process

## Colorado Health Assessment and Planning System Prioritization Scoring Tool

Instructions: Rate each criteria on a scale of 0 to 2 with 0 = "no" 1 = "somewhat" and 2 = "yes"

	Significance to Public Health		Ability to Impact the Issue		Capacity to Address the Issue		Prior Priority	
	Does the issue impact a large number or high percentage of people in our community?	Do health disparities exist? (Are sub-populations more affected than the general public?)	Do strategies exist that can be implemented locally produce the desired outcome?	Does community support for change exist, including political will?	Is a local organization prepared to take the lead on the issue?	Are sufficient resources (funding, staff, expertise) available or obtainable?	Was the issue a priority in your last public health improvement plan?	TOTALS
Criteria Weight:								
Issue 1.								0
Issue 2.								0
Issue 3.								0
Issue 4.								0
Issue 5.								0
Issue 6.								0
Issue 7.								0

# Prioritization Process

- ▶ Small Groups
- ▶ Independent Idea Generation
- ▶ Round Robin: list top health issue
- ▶ Clarify
- ▶ Rank on index Cards

# What are the top 5 health concerns in Montrose County?

## Step 1 (5 min.)

### Idea Generation

- ▶ Break into small groups, sit in circle
- ▶ Individually, take a few minutes to list your ideas on a worksheet
- ▶ Work independently

## Step 2 (10 min.)

### Small Group Round Robin

- ▶ Get all the ideas out quickly
- ▶ Briefly share 1 top health concern
- ▶ Use key words
- ▶ Next person shares around in a circle
- ▶ Share new ideas
- ▶ Facilitator may ask clarifying questions

# What are the top 5 health concerns in Montrose County?

## Step 3 (10 min.)

### Clarify

- ▶ Does an item need clarifying?
- ▶ Agree with logic or relative importance?
- ▶ Group items together?

## Step 4 (10 min.)

### Rank

- ▶ Individually rank each item
- ▶ Use index cards to give a rank



# What are the top 5 health concerns in Montrose County?

## Step 5

### Sort and Score

- ▶ Volunteers help read score
- ▶ Take a break while facilitators add up the scores

## Step 6

### Discuss Results

- ▶ Which got the highest score?
- ▶ Any ties? Which got the most “votes”?
- ▶ Share with other group

“#2” Write the corresponding item number in the upper left corner

Write out your chosen item from the list:  
“Mental Health for Families”

#2  
Item  
Number

Mental Health in Families

#5  
Ranking  
Number

We will use the scale 1-5:

1 = least important      5 = most important

Out of your 5 ideas, pick the one item that you think is *MOST* important.

Write 5 in the lower right hand corner of the card.

Next, pick the one item of the remaining 4 that you think is the least important compared to the others.

Write 1 in the lower right hand corner.

#3  
Item  
Number

Health Eating Active Living

#4  
Ranking  
Number

We will use the scale 1-5:

1 = least important      5 = most important

Next, pick one item of the remaining 3 that you think is the most important of those remaining and write 4 in the lower right hand corner.

Next, pick the one item of the remaining 2 that you think is the least important and write 2 in the lower right hand corner.

# What are the top 5 health concerns in Montrose County?

## Step 5

### Sort and Score

- ▶ Volunteers help read score
- ▶ Take a break while facilitators add up the scores

## Step 6

### Discuss Results

- ▶ Which got the highest score?
- ▶ Any ties? Which got the most “votes”?
- ▶ Share with other group

# Next Steps

- ✓ Systematically review and combined the list to come up with one set of top 5 recommendations to fairly and equitably represent the community's input from this process.
- ✓ Share results with Stakeholders
- ✓ Share results with WCPHP Core Planning Team and hospitals: Prioritizations determined for regional Public Health process and hospitals
- ✓ Stakeholders invited to participate in planning process in 2017

The background features abstract, overlapping green geometric shapes, primarily triangles and polygons, in various shades of green, creating a modern and dynamic design.

~Thank You~

[mwacker@gunnisoncounty.org](mailto:mwacker@gunnisoncounty.org)

[kmelland@gunnisoncounty.org](mailto:kmelland@gunnisoncounty.org)

970-641-7913