

Delta County Stakeholder Meeting

Karen Koenemann, Public Health Director, MA MAT

Margaret Wacker, WCPHP Coordinator, MPH

Katherine Melland, WCPHP Health Planner, MPH



December 1st, 2016

Agenda

10:30am-1:30 pm

- ▶ Welcome and Introductions
- ▶ West Central Public Health Partnership (WCPHP) Overview, Public Health Improvement Plan (PHIP) Update
- ▶ State Innovation Model (SIM) and Grants Update
- ▶ Delta County Presentation
- ▶ Lunch
- ▶ Prioritization Process
- ▶ Discussion

Introductions

Name

Agency



- ▶ **Regional Collaboration:**

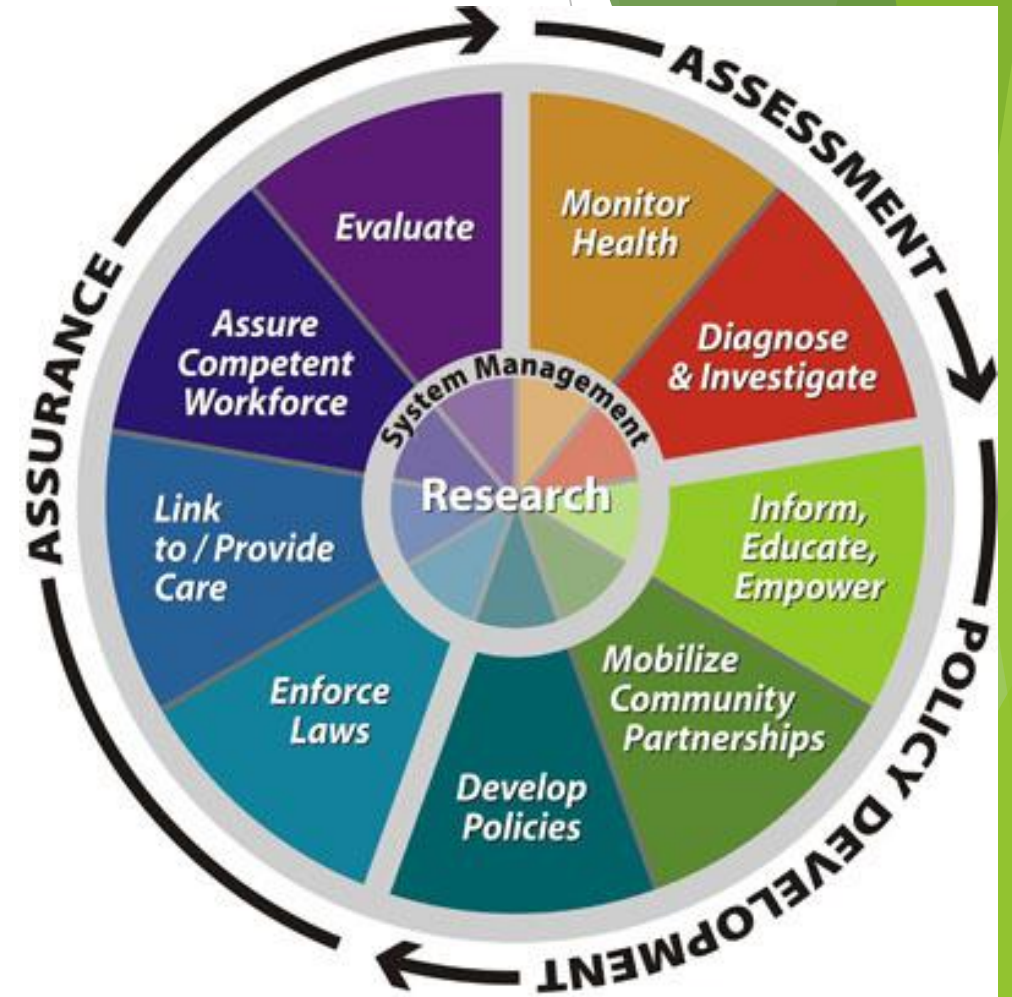
**Delta, Gunnison, Hinsdale, Montrose, Ouray
and San Miguel Counties**

- ▶ **State model**
- ▶ **Larger impact**
- ▶ **Combined expertise**

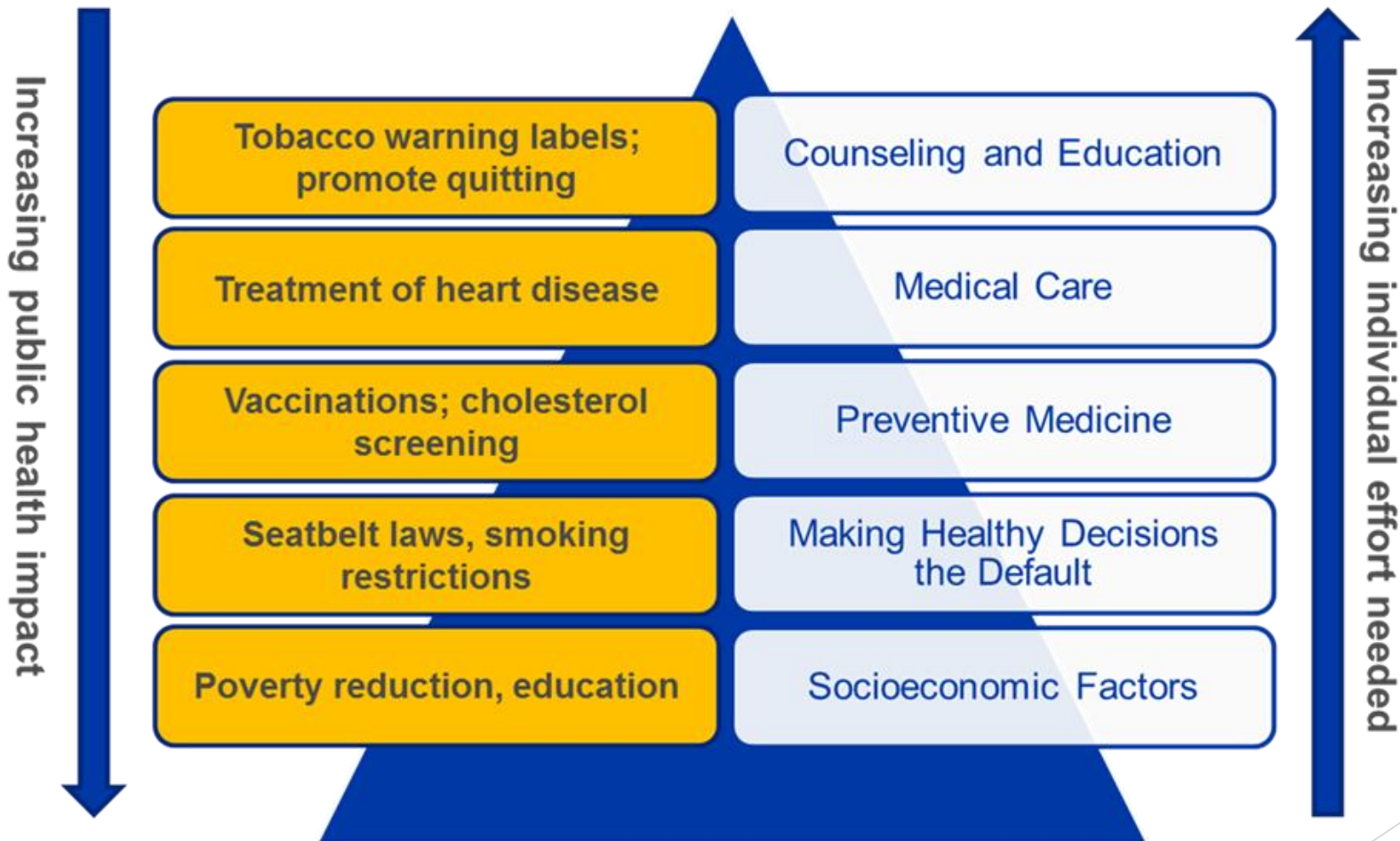
Public Health Core Services

Essential Public Health Services

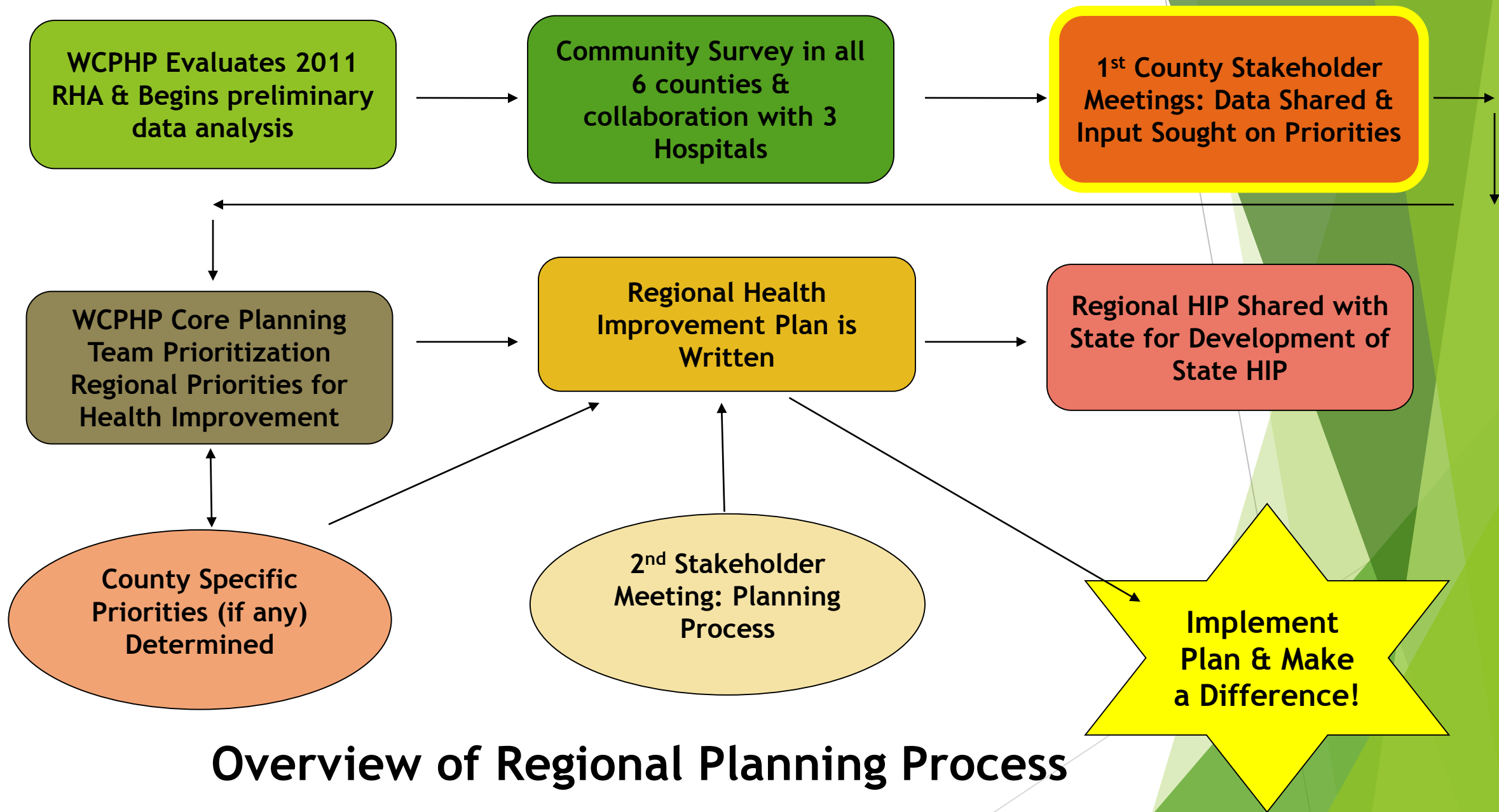
1. Assessment, Planning, and Communication
2. Vital Records and Statistics
3. Communicable Disease Prevention, Investigation, and Control
4. Prevention and Population Health Promotion
5. Emergency Preparedness and Response
6. Environmental Health
7. Administration and Governance



Framework for Public Health Action



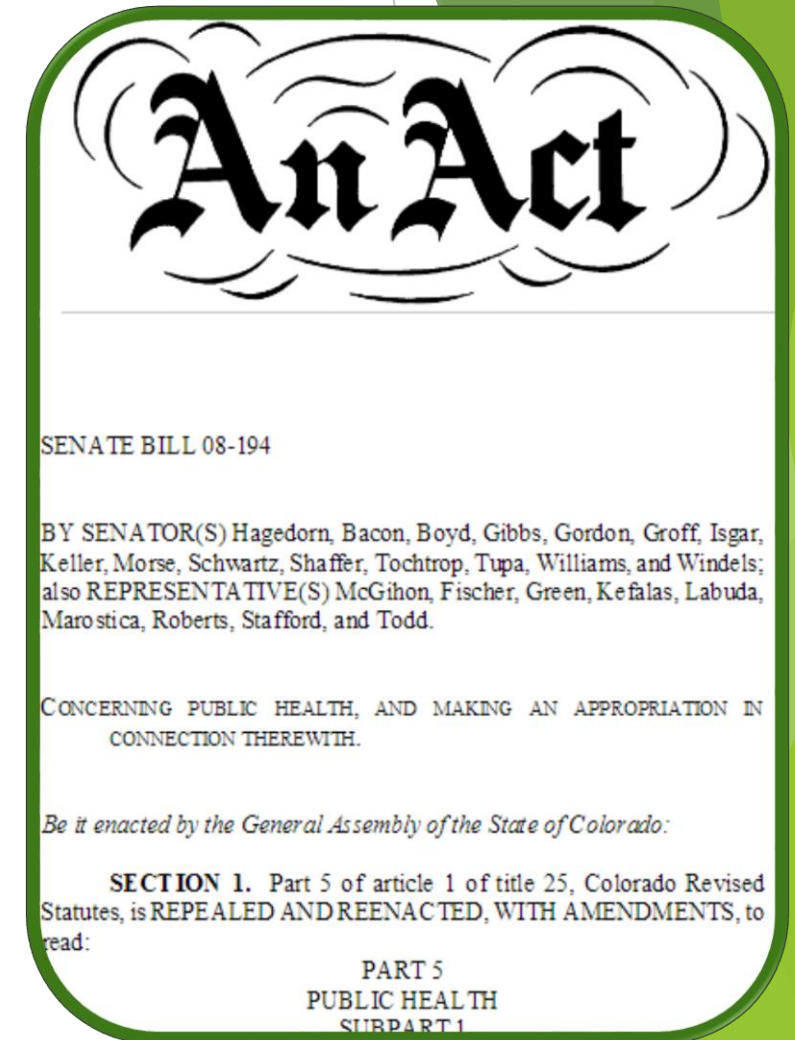
Frieden TR. Framework for public health action: the health impact pyramid. Am J Public Health 2010;100:590-5.



Overview of Regional Planning Process

Regional Health Assessment: 2011 & 2016

- ▶ Healthy Eating Active Living
(Obesity Prevention)
- ▶ Mental Health/Substance Abuse
- ▶ Improve Well Water Quality
- ▶ Food Safety



Success!
Thank you for
your input and
support.



Delta County Demographics



Race or Ethnicity:

94.9% White 2014
84% State

14.5% Hispanic 2014
20.9% State



High School Diploma:

88.0% 2014
90.4% State



English Language Learner:

6.7% 2015
14.2% State



Unemployment Rate:

5.1% 2015
3.5% State



Data: American Community Survey, 2010-2014
Kids Count 2016, Bureau of Labor Statistics, Local Area Unemployment

Delta County Demographics



Median Household Income:

\$42,389 2014
\$59,448 State



Persons in Poverty:

15.6% 2014
11.5% State



Self Sufficiency Standard: (2 adults, 2 children)

\$51,349 2015
212% of federal poverty level

School Aged Children in Poverty:

20.7% 2014
14.9% State



Data: American Community Survey, 2010-2014
US Census Small Area Income & Poverty Estimates (SAIPE)
University of Washington, Center for Women's Welfare

Delta County Demographics



**Occupied Housing
Stock:**

12,527

2014

71.8% owned

28.2% rented

Healthy Housing:

High Radon Potential, Zone 1

34.11% above EPA action limit (4 pCi/L)

Lead Exposure

28.4% of housing units before 1960

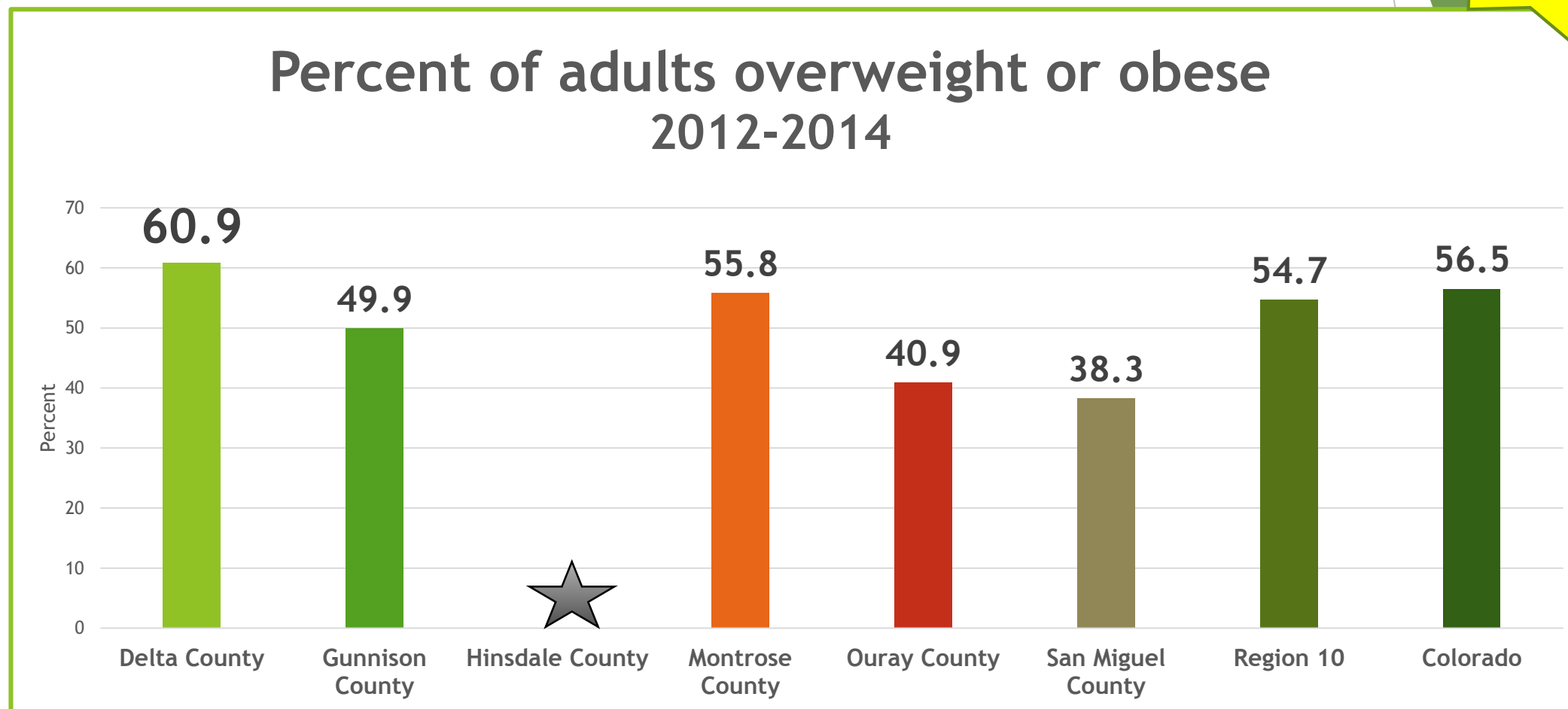
Regional Health Assessment 2011

Priority Area Update

- ▶ Regional & County Level Data
- ▶ Key Outcome Indicators
 - ▶ Population Health Outcomes= difficult to move the needle in 5 years
 - ▶ Improvements with new resources, staff, capacity of WCPHP

Heathy Eating Active Living

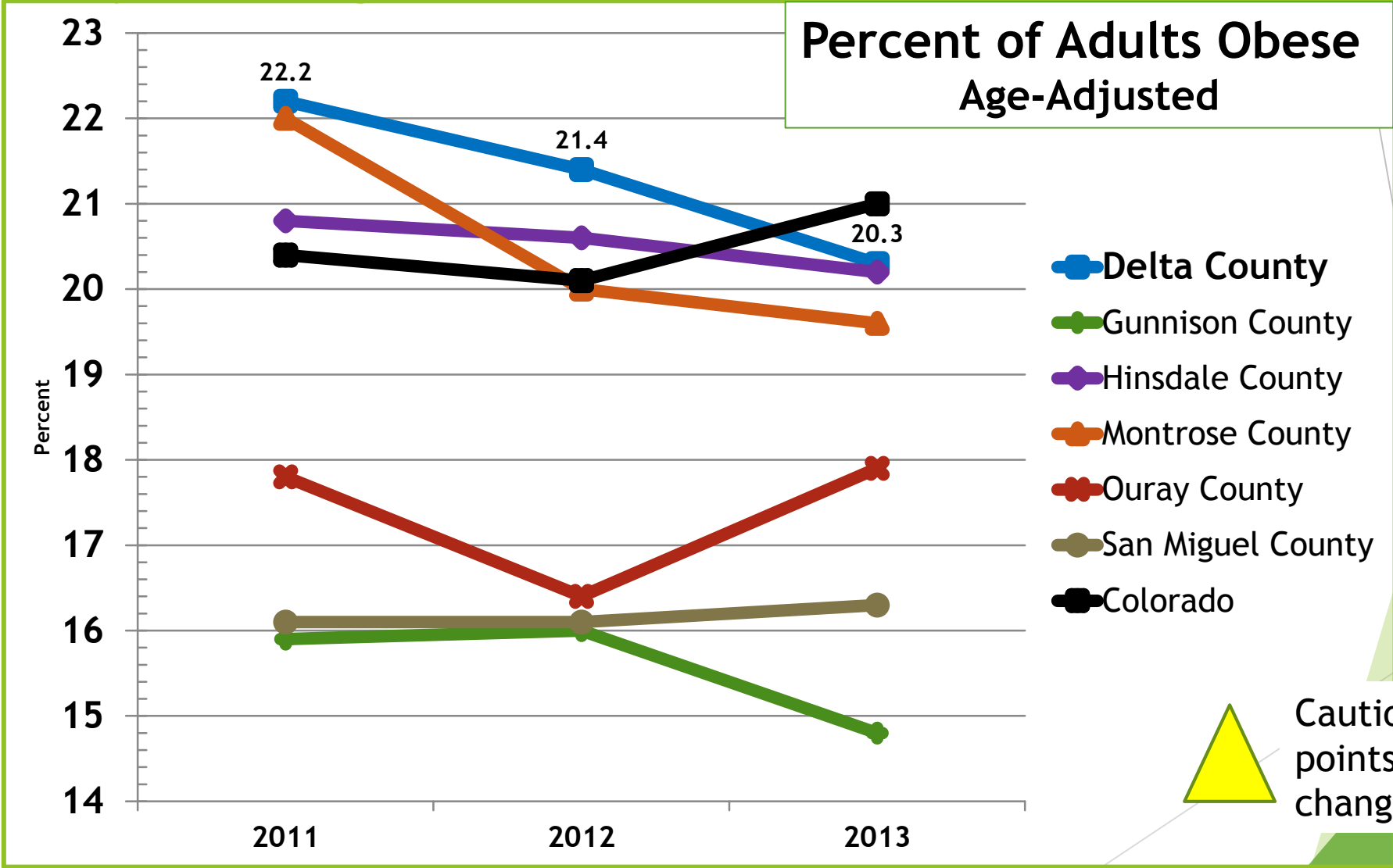
2011
Priority



Data: Behavioral Risk Factor Surveillance System (BRFSS)

Heathy Eating Active Living

2011
Priority

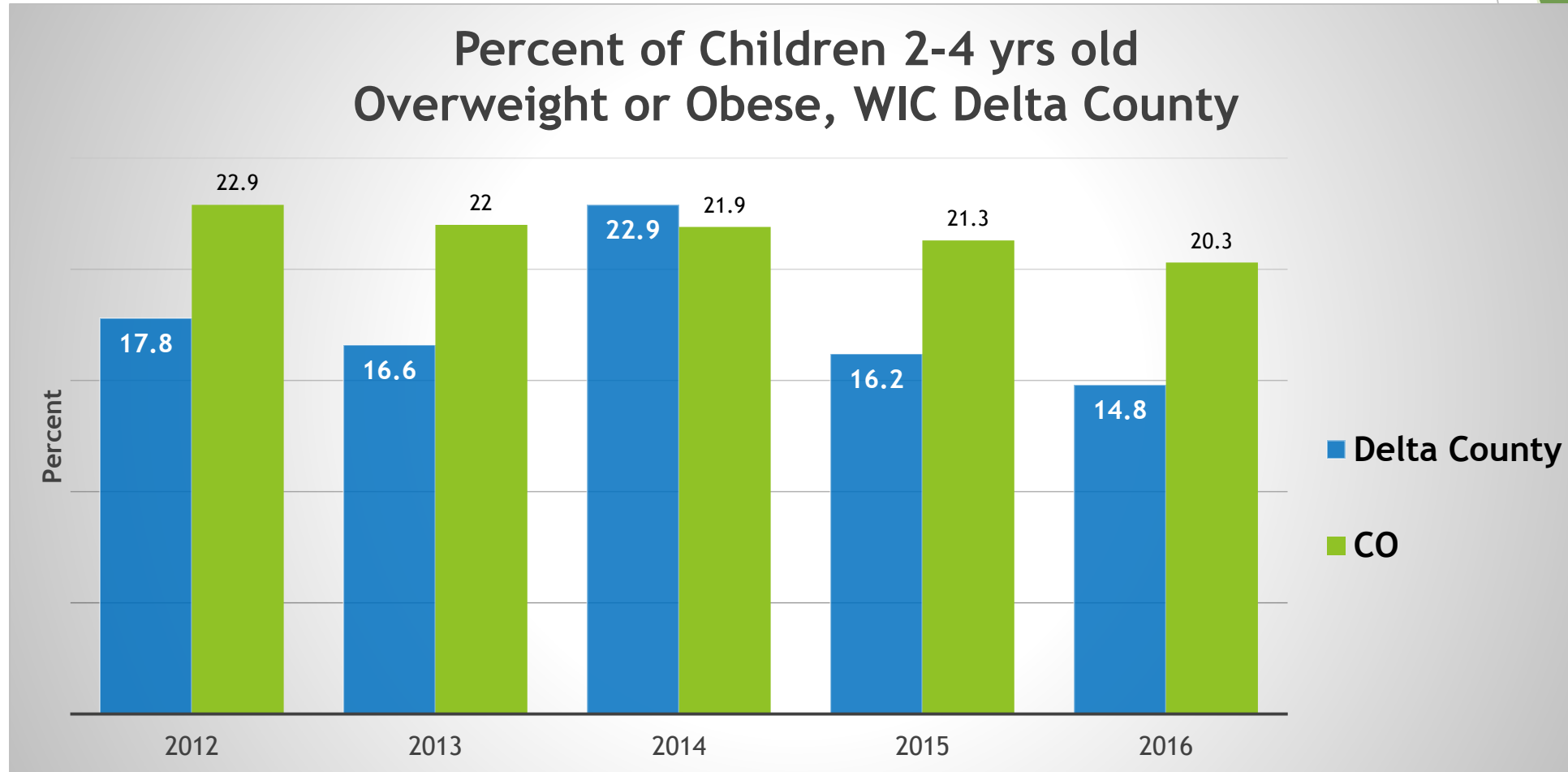


Caution interpreting 3 points as trend. Small changes appear large

Data: National Center for Chronic Disease Prevention and Health Promotion, BRFSS

Heathy Eating Active Living

2011
Priority



Data: Special Supplemental Nutrition Program for Women, Infants, and Children (WIC), 2016 Report

Mental Health

2011
Priority

Table 6. Suicide Age-Adjusted Death Rate per 100,000 People, 5 Year Averages				Number of Suicides
	2000-2004	2005-2009	2010-2014	2010-2014
DELTA	23.8	14.9	24.6	37
GUNNISON	14.5	13.5	14.9	11
HINSDALE	*	*	*	*
MONTROSE	20.9	21.8	18.2	41
OURAY	*	19.0	23.7	5
SAN MIGUEL	6.3	13.5	10.2	5
COLORADO	15.9	16.7	18.4	4,892

Data: CO Health Information Dataset, Death Query, Death Certificate

Mental Health

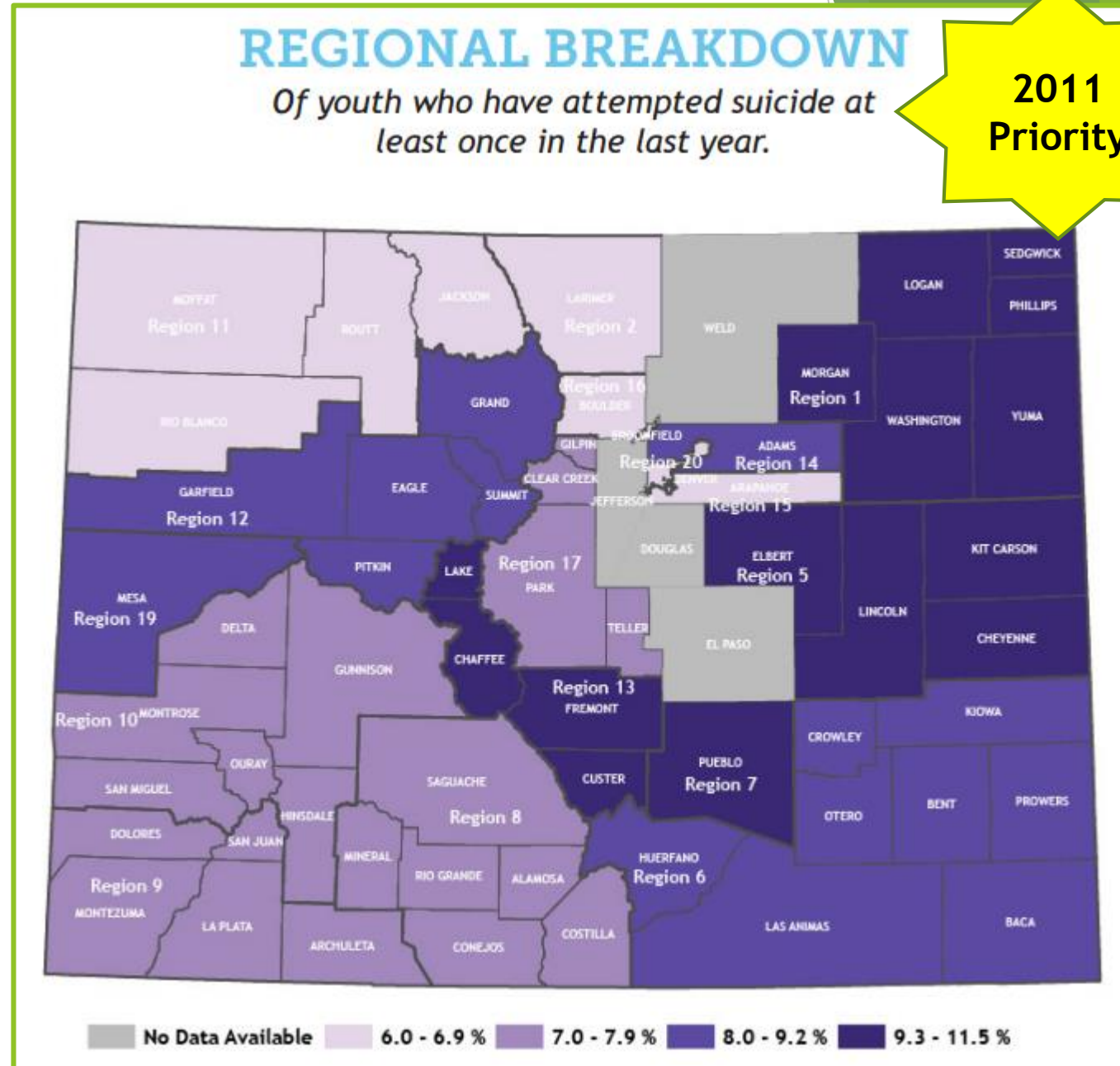
Percent of high school students who have attempted suicide at least once in the last year



6.9% Region 10, 2015
7.8% State



5.1 % Region 10, 2013
6.6% State



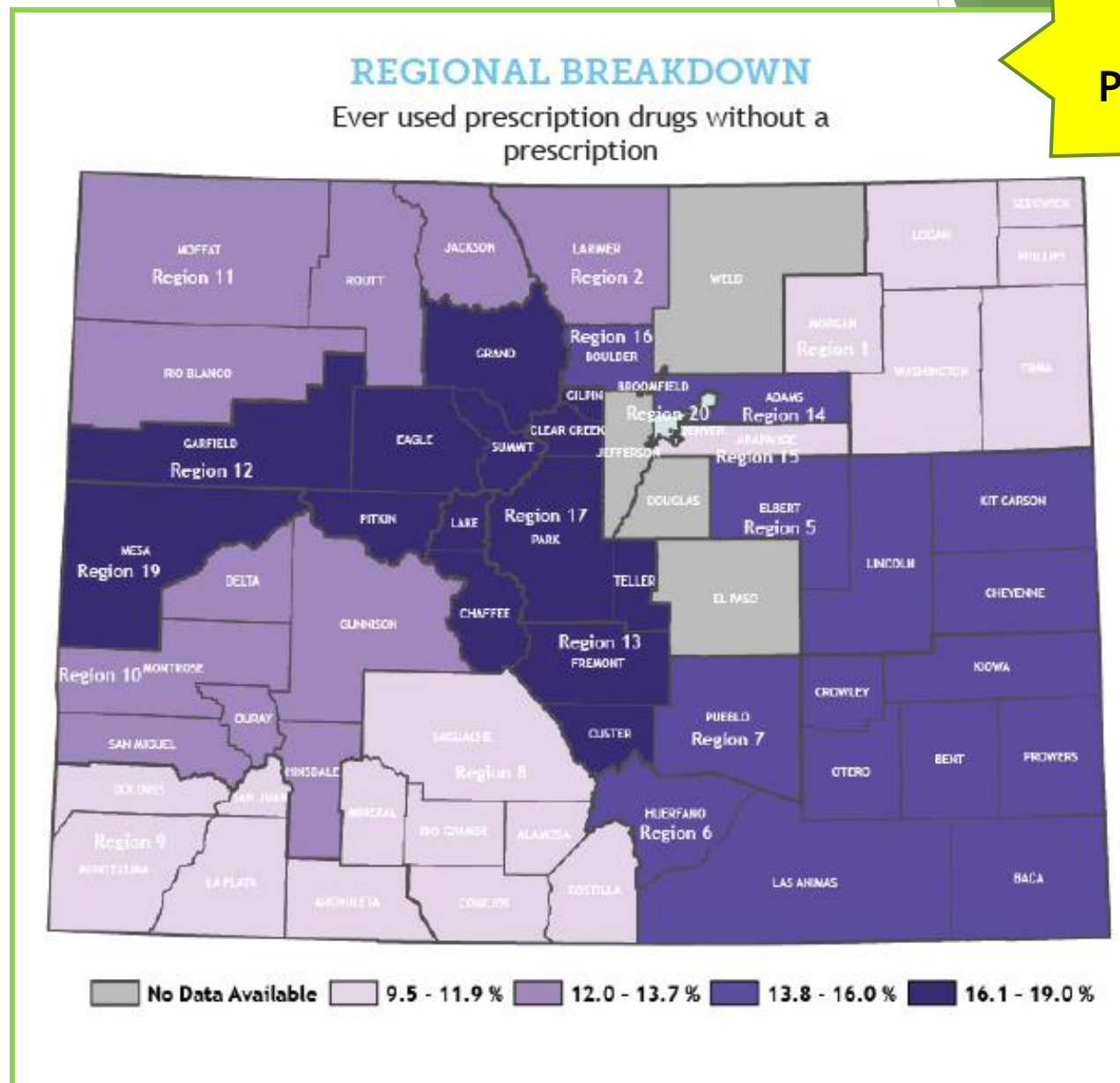
Substance Abuse

Percent of high school students who have ever used prescription drugs without a prescription

■ **13.7%** Region 10, 2015
13.7% State

↑ **15.2%** Region 10, 2013
13.6% State

2011
Priority



Substance Abuse

2011
Priority

Percent of Adults who are Current Smokers



15.9% Delta County, 2013-2015
16.5% Region 10



21.5% Delta County, 2011-2013
16.2% Region 10

Data: BRFSS, CDPHE VISION Tool

Well Water Quality



10% of Region 10
Residents drinking
water= Private Well



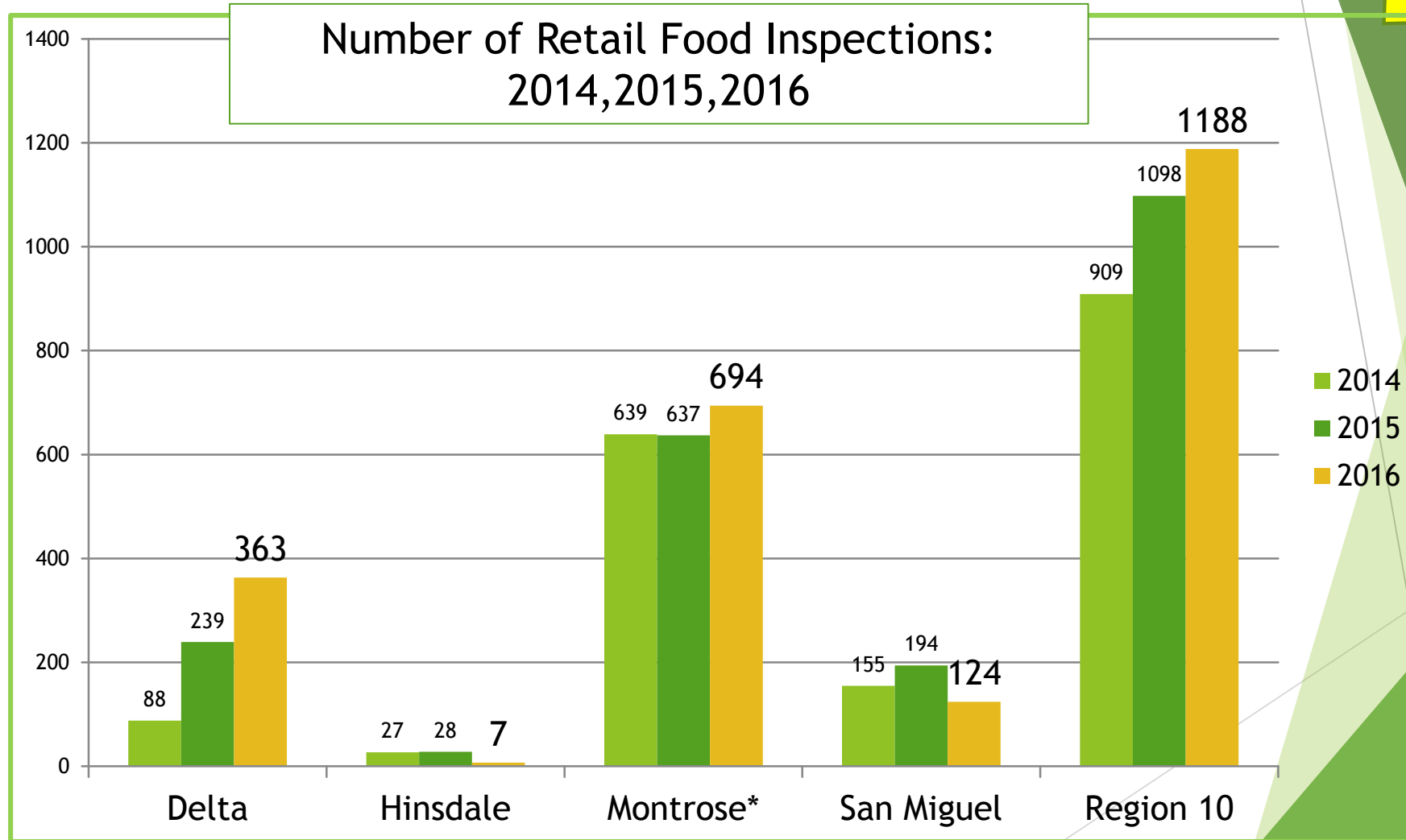
10,000
Residents primary
drinking water sources
is unregulated

**2011
Priority**

Data: BRFSS

Food Safety

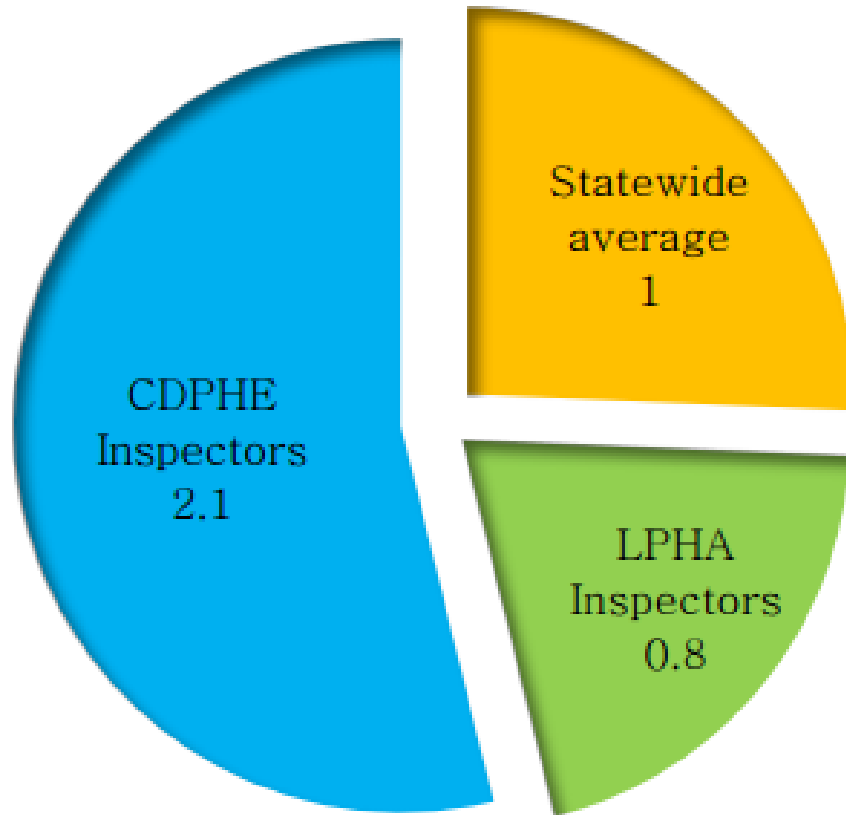
2011
Priority



Data: CO Environmental Public Health Tracking, CDPHE, Division of Envs. Health & Sustainability

Food Safety

2011
Priority



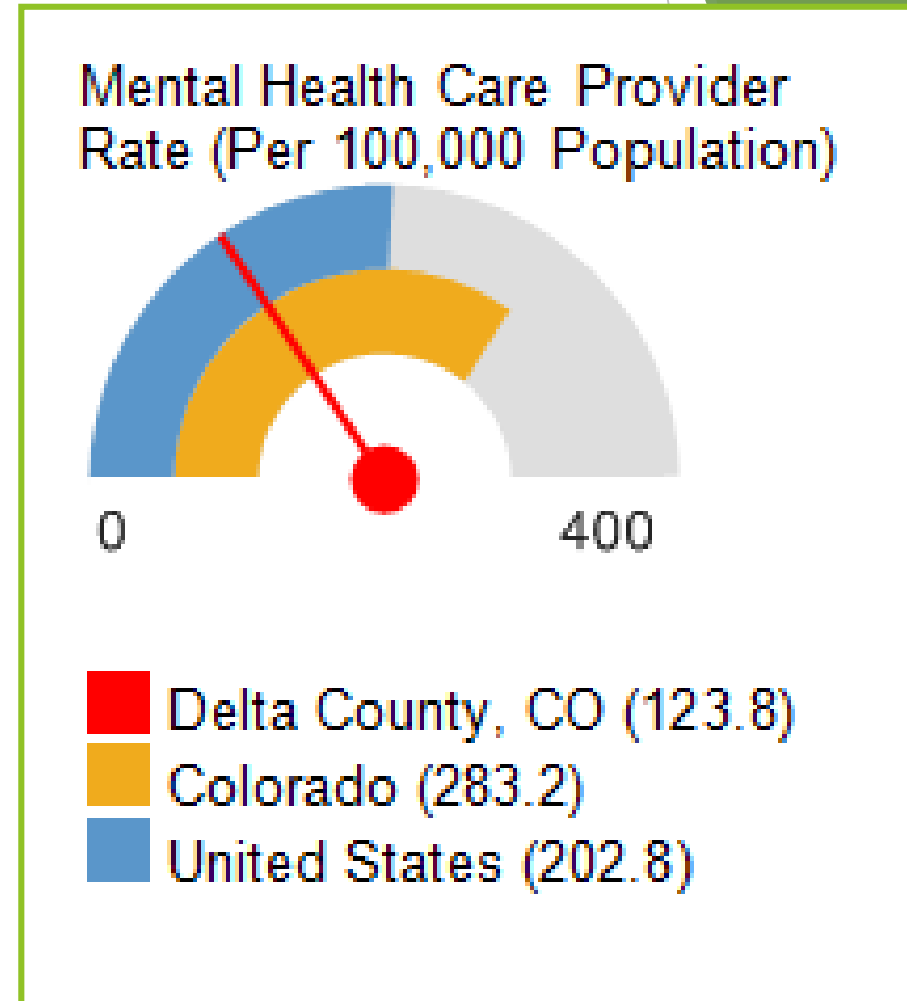
Food-Borne Illness Critical Violations per Retail Food Inspection**

74 Food-Borne Illness
Critical Violations,
74 Corrected
Delta County 2016

** For jurisdictions using CDPHE's data system for SFY

Access to Health

- ▶ Mental Health/Substance Abuse
- ▶ Primary Care
- ▶ Dentists
- ▶ Specialists
- ▶ Uninsured/Cost of Insurance
- ▶ System Navigation
- ▶ Health Literacy



Data: County Health Rankings, 2016

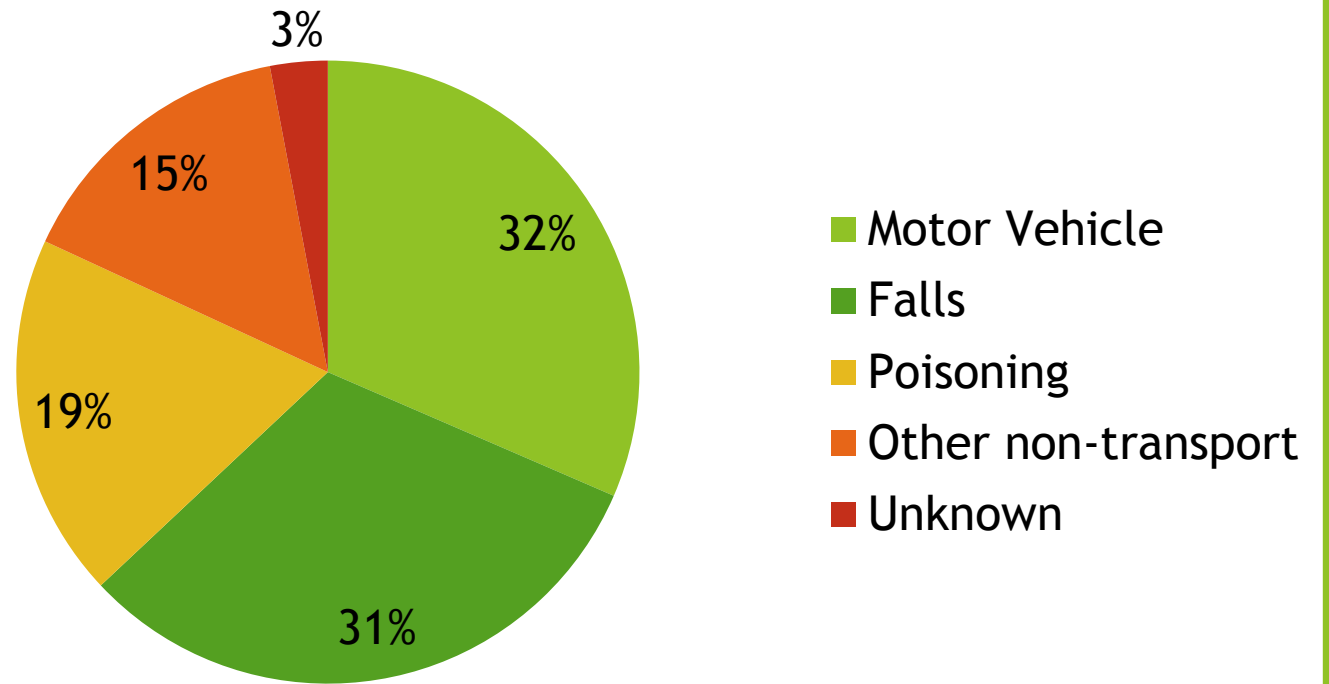
Injury

5th Leading Cause of Death
Delta County

2nd Leading Cause of Years of
Potential Life Lost
Delta County

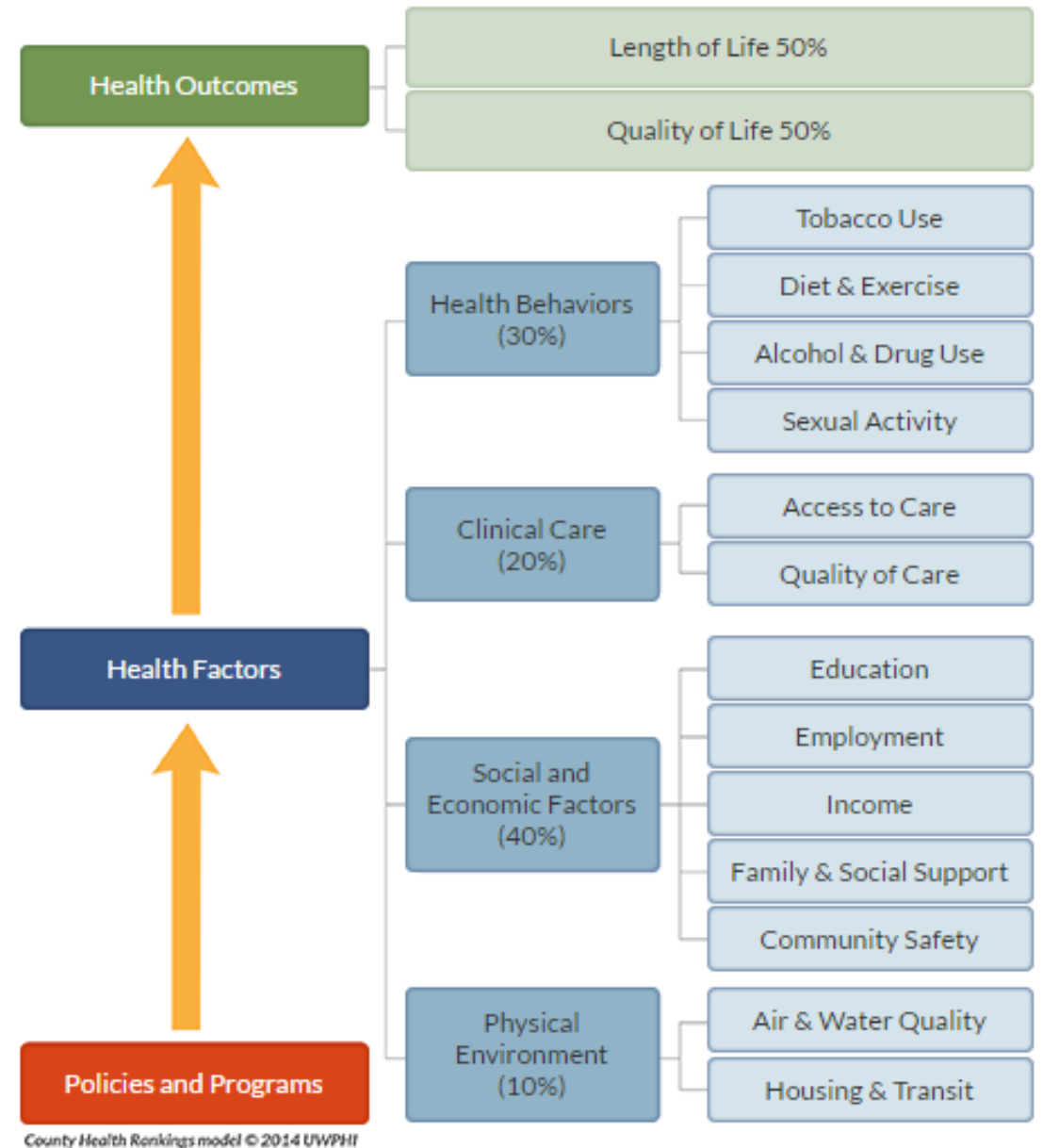
Falls highest rate of injury
hospitalizations
Delta County 2011-2014

Unintentional Injury Deaths,
Delta County 2011-2014



Overall Health: County Health Rankings

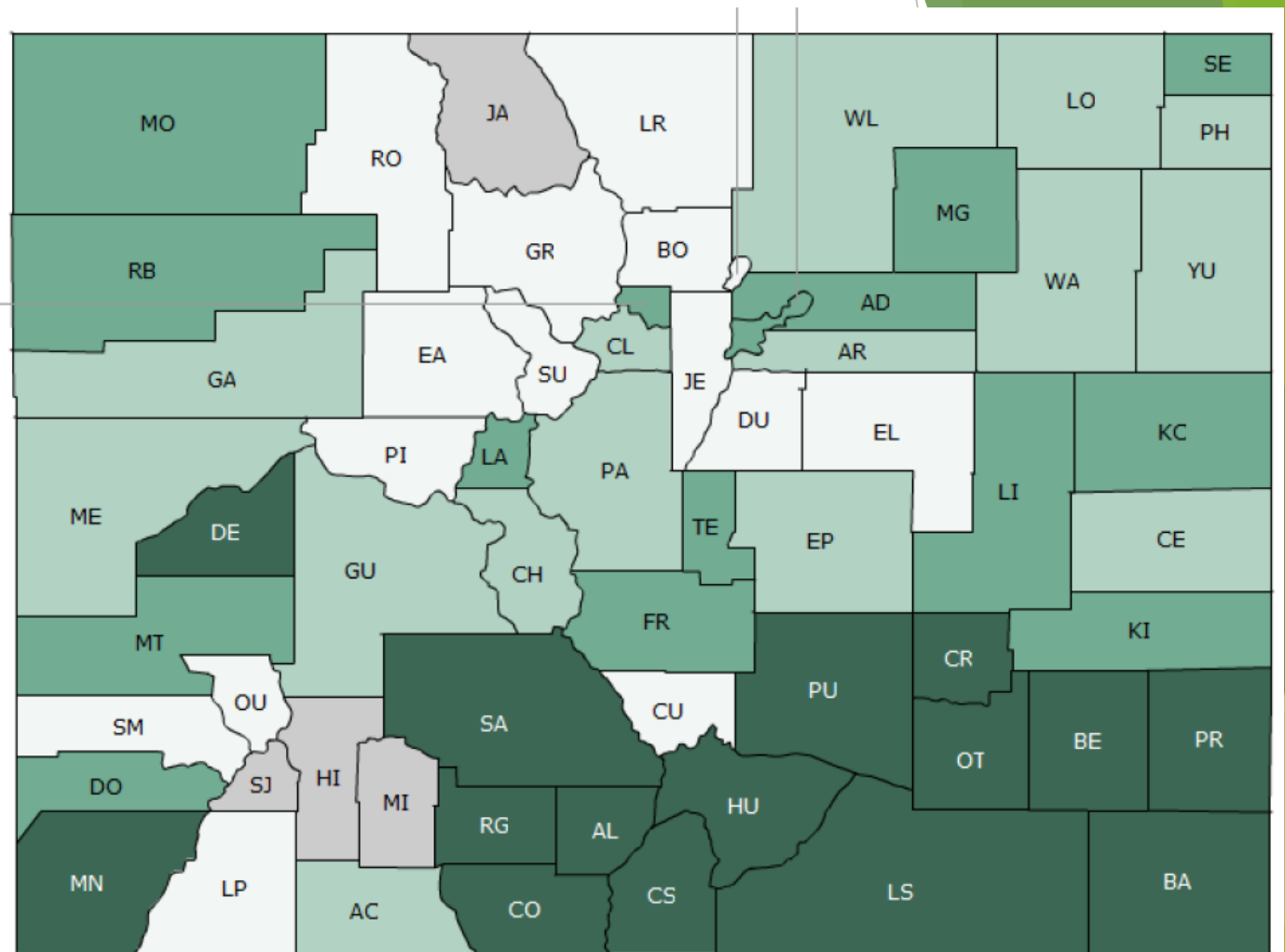
- ▶ Compare health across state of CO
- ▶ Health Outcomes
- ▶ Health Factors



Health Outcomes:

Delta County 47 of 60 counties

- ▶ Length of life (48)
- ▶ Quality of life (47)

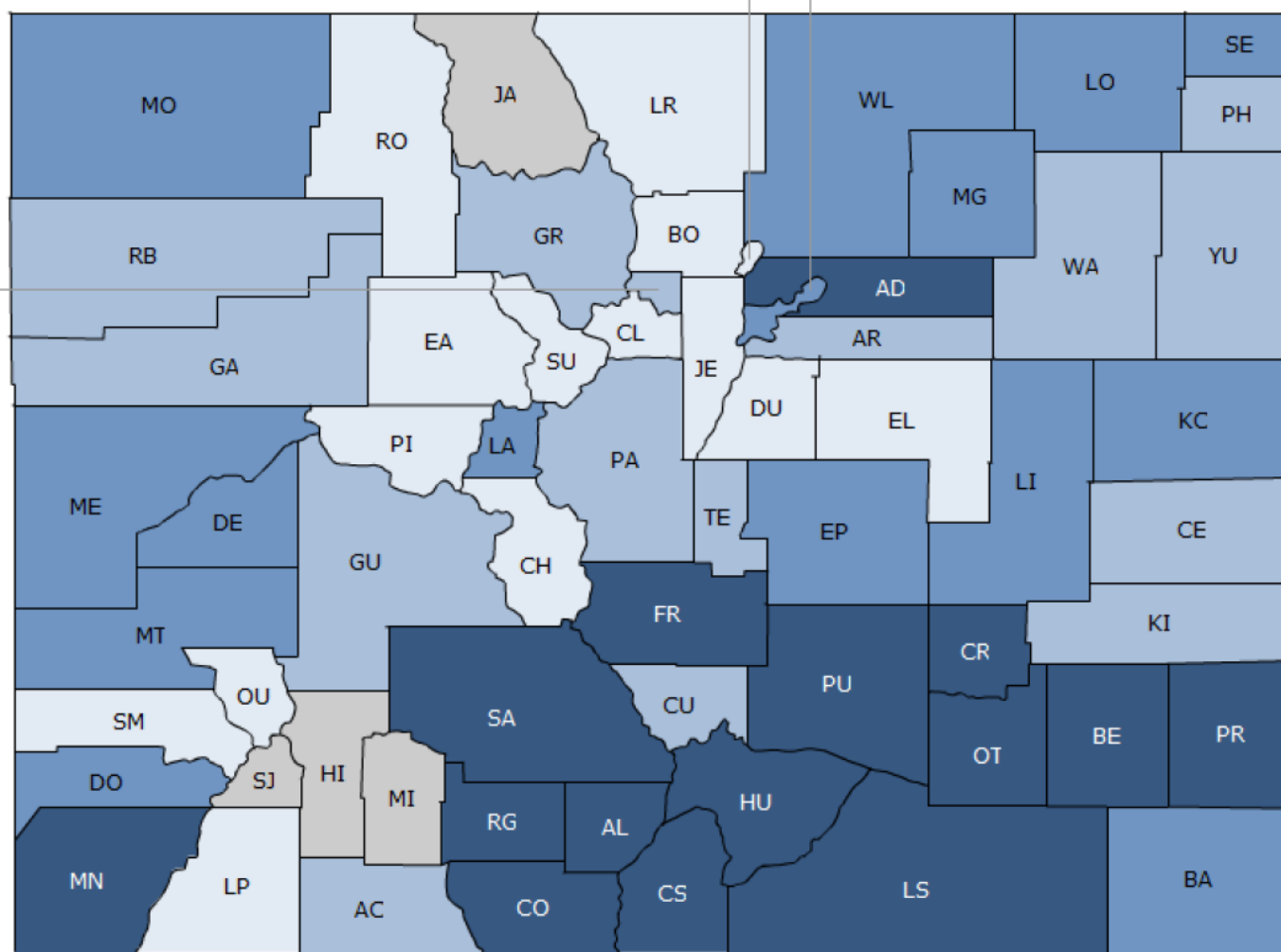


Rank 1-15 Rank 16-30 Rank 31-45 Rank 46-60 Not Ranked

Health Factors:

Delta County 39 of 60 counties

- ▶ Health Behaviors (25)
- ▶ Clinical Care (39)
- ▶ Social & Economic (44)
- ▶ Physical Environment (25)



Rank 1-15 Rank 16-30 Rank 31-45 Rank 46-60 Not Ranked

Strengths

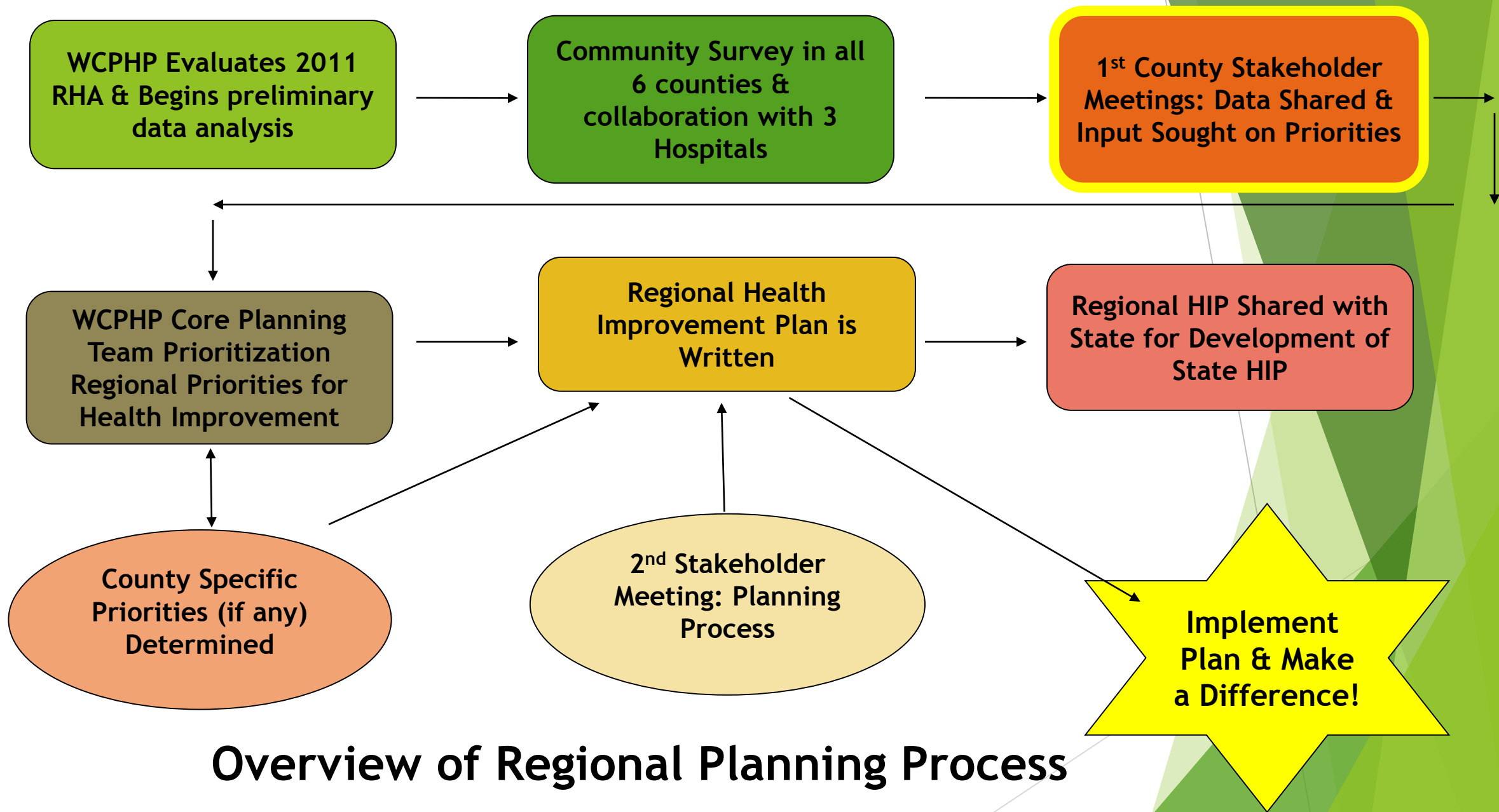
- ▶ Declining Obesity
- ▶ Declining Adult Smoking
- ▶ Community Partnerships
- ▶ Regional Hospital
- ▶ Agriculture Hub

Opportunities

- ▶ Healthy Eating Active Living
- ▶ Mental Health/Substance Abuse
- ▶ Private Well Water
- ▶ Food Safety
- ▶ Access to Health
- ▶ Injury

Prioritization Process

- ▶ Overview of process
- ▶ What we will do with results



Overview of Regional Planning Process

Core Planning Team Prioritization Tool

Colorado Health Assessment and Planning System Prioritization Scoring Tool

Instructions: Rate each criteria on a scale of 0 to 2 with 0 = "no" 1 = "somewhat" and 2 = "yes"

	Significance to Public Health		Ability to Impact the Issue		Capacity to Address the Issue		Prior Priority	
	Does the issue impact a large number or high percentage of people in our community?	Do health disparities exist? (Are sub-populations more affected than the general public?)	Do strategies exist that can be implemented locally produce the desired outcome?	Does community support for change exist, including political will?	Is a local organization prepared to take the lead on the issue?	Are sufficient resources (funding, staff, expertise) available or obtainable?	Was the issue a priority in your last public health improvement plan?	TOTALS
Criteria Weight:								
Issue 1.								0
Issue 2.								0
Issue 3.								0
Issue 4.								0
Issue 5.								0
Issue 6.								0
Issue 7.								0

Prioritization Process

- ▶ Small Groups
- ▶ Independent Idea Generation
- ▶ Round Robin: list top health issue
- ▶ Clarify
- ▶ Rank on index Cards

What are the top 5 health concerns in Delta County?

Step 1 (5 min.)

Idea Generation

- ▶ Break into small groups, sit in circle
- ▶ Individually, take a few minutes to list your ideas on a worksheet
- ▶ Work independently

Step 2 (10 min.)

Small Group Round Robin

- ▶ Get all the ideas out quickly
- ▶ Briefly share 1 top health concern
- ▶ Use key words
- ▶ Next person shares around in a circle
- ▶ Share new ideas
- ▶ Facilitator may ask clarifying questions

What are the top 5 health concerns in Delta County?

Step 3 (10 min.)

Clarify

- ▶ Does an item need clarifying?
- ▶ Agree with logic or relative importance?
- ▶ Group items together?

Step 4 (10 min.)

Rank

- ▶ Individually rank each item
- ▶ Use index cards to give a rank

What are the top 5 health concerns in Delta County?

Step 5

Sort and Score

- ▶ Volunteers help read score
- ▶ Take a break while facilitators add up the scores

Step 6

Discuss Results

- ▶ Which got the highest score?
- ▶ Any ties? Which got the most “votes”?
- ▶ Share with other group

“#2” Write the corresponding item number in the upper left corner

Write out your chosen item from the list:
“Mental Health for Families”

#2
Item
Number

Mental Health in Families

#5
Ranking
Number

We will use the scale 1-5:

1 = least important 5 = most important

Out of your 5 ideas, pick the one item that you think is *MOST* important.

Write 5 in the lower right hand corner of the card.

Next, pick the one item of the remaining 4 that you think is the least important compared to the others.

Write 1 in the lower right hand corner.

#3
Item
Number

Health Eating Active Living

#4
Ranking
Number

We will use the scale 1-5:

1 = least important 5 = most important

Next, pick one item of the remaining 3 that you think is the most important of those remaining and write 4 in the lower right hand corner.

Next, pick the one item of the remaining 2 that you think is the least important and write 2 in the lower right hand corner.

What are the top 5 health concerns in Delta County?

Step 5

Sort and Score

- ▶ Volunteers help read score
- ▶ Take a break while facilitators add up the scores

Step 6

Discuss Results

- ▶ Which got the highest score?
- ▶ Any ties? Which got the most “votes”?
- ▶ Share with other group

Next Steps

- ▶ Combine all data sources: Hospital Community Health Survey, Key Informant Interviews, All Regional Stakeholder Meetings
- ▶ Share results with Stakeholders and get final feedback via e-mail
- ▶ WCPHP Core Planning Team and Hospitals use prioritization process to finalize the top priorities for the region
- ▶ Stakeholder Meeting #3 PHIP action planning

The background features abstract, overlapping green geometric shapes, primarily triangles and polygons, in various shades of green, creating a modern and dynamic visual effect.

~Thank You~

mwacker@gunnisoncounty.org

kmelland@gunnisoncounty.org

970-641-7913