

# Healthy Housing Regional Planning Meeting December 13<sup>th</sup>, 2017

Margaret Wacker, WCPHP Coordinator



# Agenda

## 9:00 am- 12:00 pm

9:00 am Introductions/Icebreaker (30 mins)

9:30 am Healthy Housing Strategic Planning Activity (60 mins)

- ▶ Health Equity 101 - video
- ▶ Feedback on Strategies - small groups
- ▶ Partner Roles

10:30 am Break (15 mins)

10:45 am Health Equity Planning Activity (45 mins)

11:30 am Public Health Improvement Plan Process Update (15 mins)

11:45 am Next Steps (15 mins)

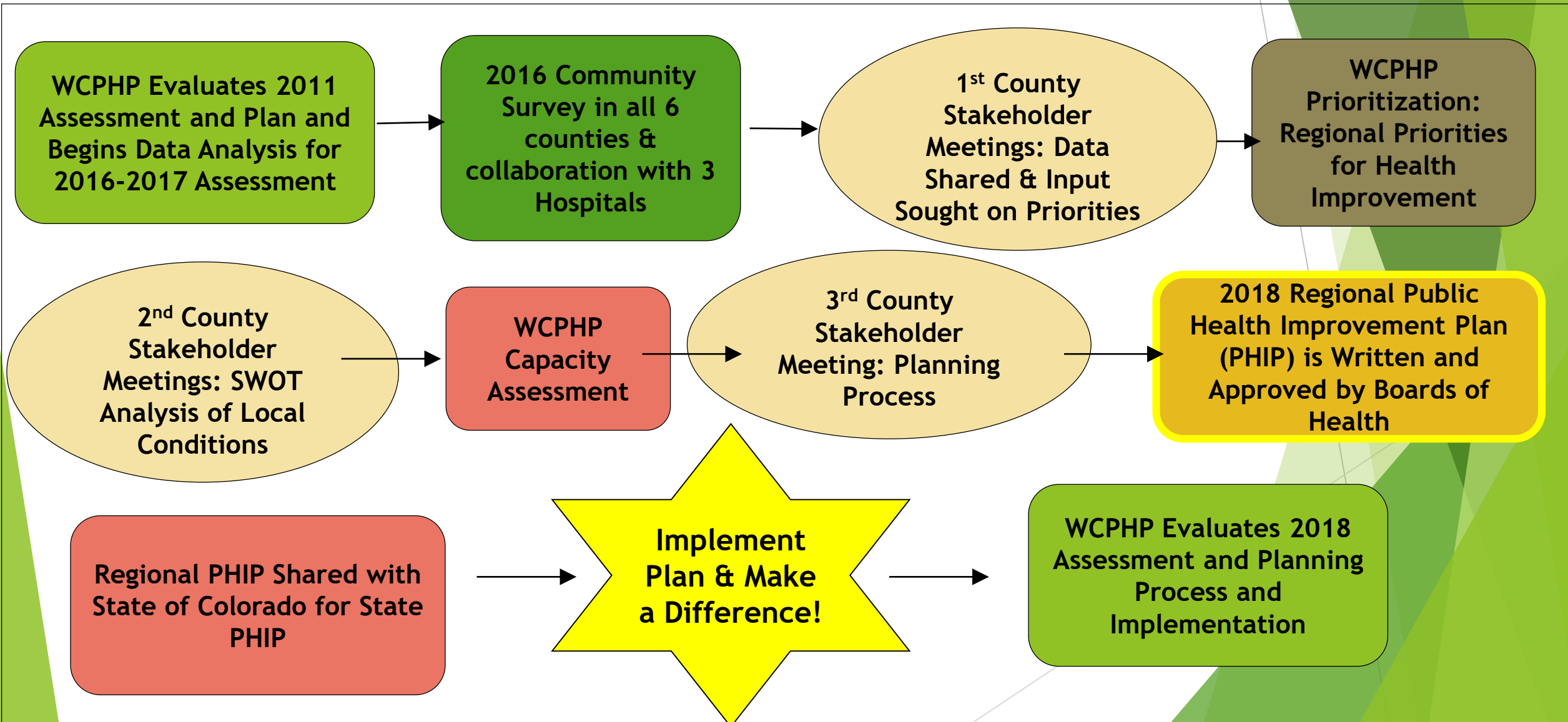
# Meeting Goals

- ▶ Community consensus on strategy areas
- ▶ Review Partner Roles
- ▶ Increase understanding of health equity
- ▶ Update on Public Health Improvement Plan Process

# Introductions

- ▶ Name
- ▶ Agency
- ▶ One thing that is unique about your current or a previous home

# Overview of Regional Assessment and Planning Process





## 2017 Regional Health Priorities

### 1. Behavioral Health

- Mental Health/Substance Abuse/Suicide Prevention

### 2. Healthy Eating Active Living

- Active Transport/Built Environment

### 3. Healthy Housing

- Radon, Water Quality, Lead

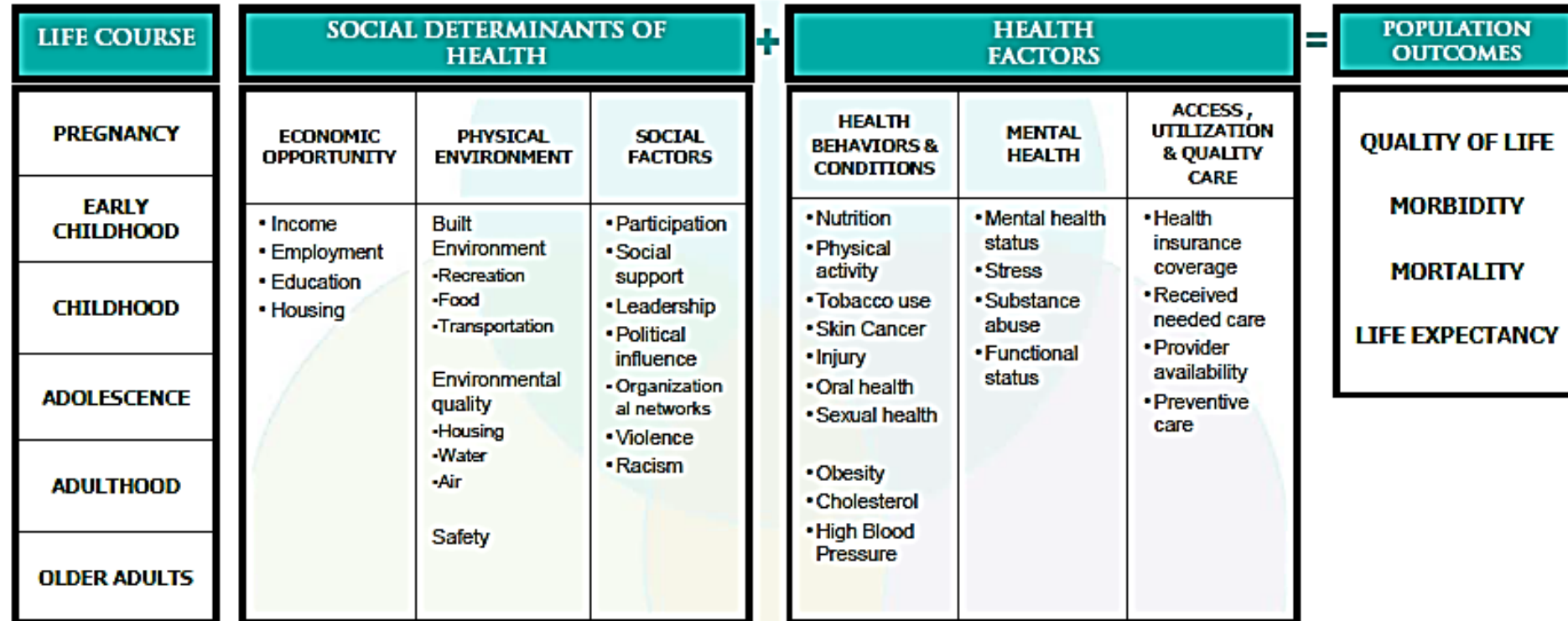
# Health Equity 101

- ▶ Diversity = different types
- ▶ Health Disparities = differences in health status between populations
- ▶ Health Equity = understanding systemic causes of differences
  
- ▶ What is Health Equity? - Health Equity Institute  
<https://www.youtube.com/watch?v=ZPVwgnp3dAc>
  
- ▶ Health Equity and Social Justice 101 Training Series - NACCHO  
<https://www.youtube.com/watch?v=2k5XPbEB4H0>

# Health Equity

## AN EXPLANATORY MODEL FOR CONCEPTUALIZING THE SOCIAL DETERMINANTS OF HEALTH

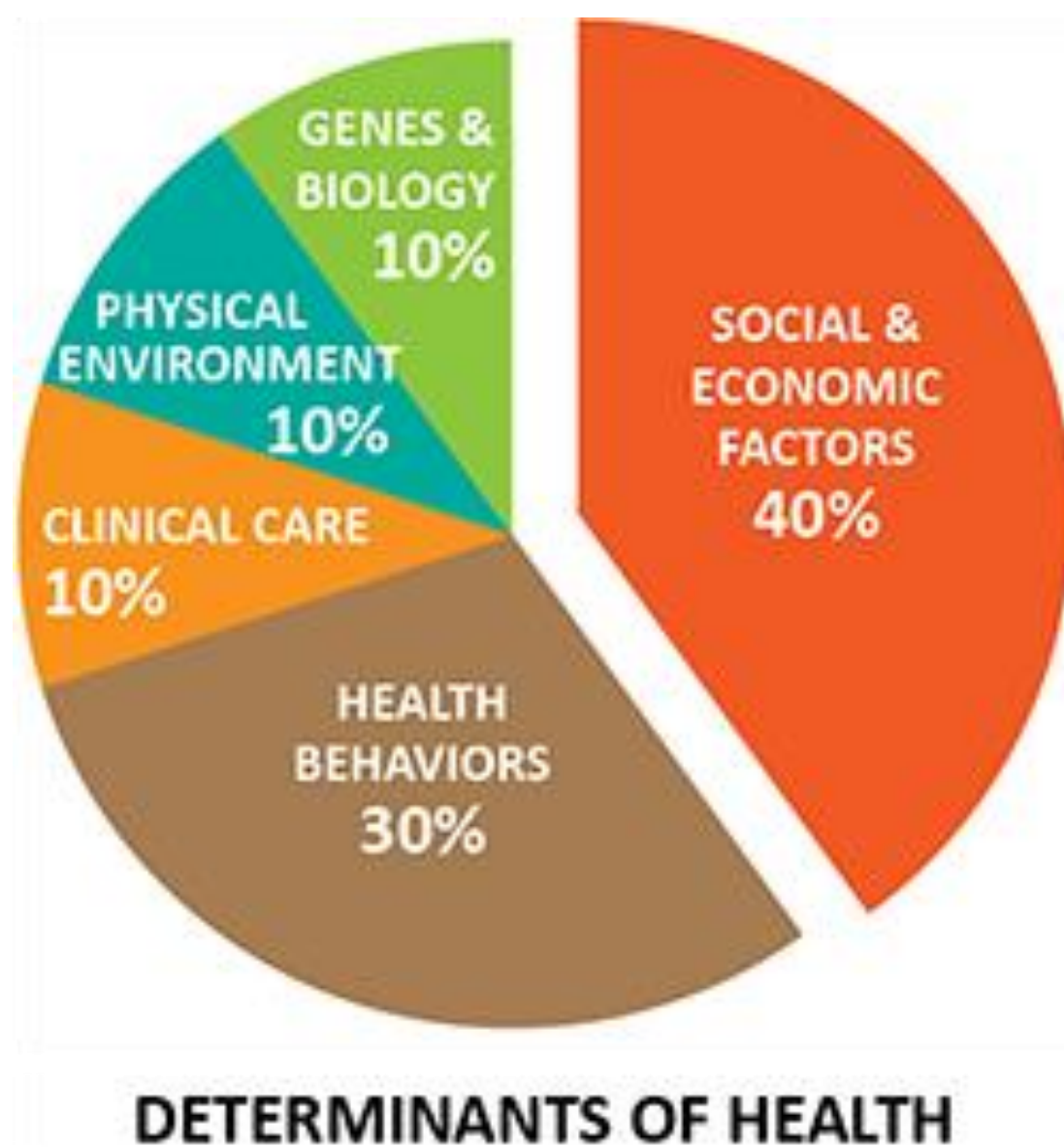
**NATIONAL INFLUENCES**  
**GOVERNMENT POLICIES**  
**U.S. CULTURE & CULTURAL NORMS**



### Public Health's Role in Addressing the Social Determinants of Health

- Advocating for and defining public policy to achieve health equity
- Coordinated interagency efforts
- Creating organizational environments that enable change
- Data collection, monitoring and surveillance
- Population based interventions to address health factors
- Community engagement and capacity building





## Social Determinants of Health Definition

“Social determinants of health are life-enhancing resources, such as food supply, housing, economic and social relationships, transportation, education and health care, whose distribution across populations effectively determines length and quality of life.”

S. A. James in *Promoting Health Equity: A Resource to Help Communities Address Social Determinants of Health*, CDC, 2008

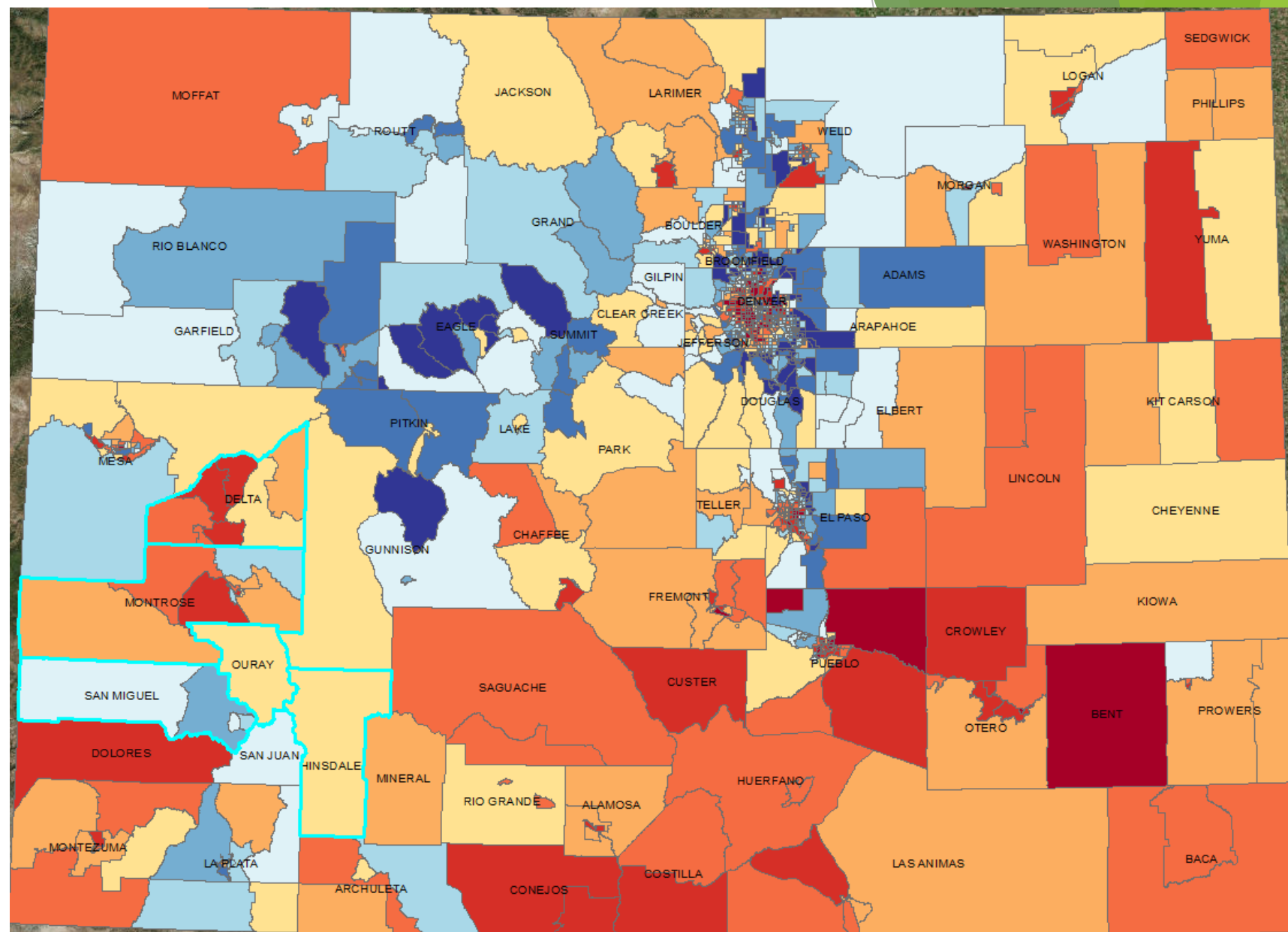
# How might we use a Health Equity Framework for our Public Health Improvement Plan

- ▶ Data - using and presenting data on health disparities
- ▶ Seeking the voice of populations affected by disparities, then using that input to guide strategy selection and program planning
  - ▶ Note: for one of our Health Equity grants we will be measuring how well we incorporate the voice of vulnerable populations in the chosen strategies
- ▶ Planning
  - ▶ Ensuring that the target populations are populations affected by disparities
  - ▶ Including a strategy around incorporating health equity into our agencies, program planning, or training

# Health Equity Data for Healthy Housing

## Child Lead Exposure Risk Map

- Children ages 0-6 years
- Poverty
- Age of Housing



### Lead Risk Index Map Legend:

Lead risk index: 1 – Lowest Risk, 10 – Highest Risk



CDPHE, American Community  
Survey (2011-2015)

# Developing Regional Strategies

## ▶ Strategies:

- ▶ Community Stakeholder Input
- ▶ Regional Alignment
- ▶ Capacity Assessment
- ▶ Evidence Based Strategies
  - ▶ State of CO Public Health Plan
  - ▶ Existing CDPHE/CDC funded strategies  
(Radon, Lead, CDC Well water grant)

# Partners & Advisors

- ▶ Subject matter experts
- ▶ Advisory group
- ▶ WCPHP to support existing initiatives
  - ▶ Regional focus
  - ▶ Align with Healthy Housing Priority Area
  - ▶ Align with stakeholder identified Strategy Areas

# Community Health Improvement Meeting Outcomes

## ► Healthy Housing Strategy Areas

### ► Policy

- Building codes, Incentivize mitigation, housing code enforcement

### ► Education

- Radon Mitigation, Lead Prevention, Landlords, Health Fair, Schools, High-Risk Populations

## To Consider:

- Infrastructure & Capacity
- Collaboration
- Data
- Advocacy role

# Draft Action Plan Strategies

- ▶ STRATEGY 1: Improve access to healthy housing through policies such as health-promoting building codes, enforcing housing codes, and incentivizing mitigation
- ▶ STRATEGY 2: Improve community knowledge of healthy housing practices such as testing and mitigation of radon, lead, and well-water
- ▶ STRATEGY 3: Increase health equity advocacy for safe affordable housing through participating in local and regional groups and coalitions



# Action Plan Small Group Activity

- ▶ Identify Note-taker and person to report out to large group
- ▶ Review Action Plan
  - ▶ Do strategies align with your knowledge of your community/agency?
  - ▶ Do strategies, objectives, target population, and indicators make sense?
  - ▶ What are the resources and barriers you know of?
- ▶ Your role in the plan
  - ▶ Does your agency contribute towards the strategy/objective?

# 2013 PHIP: Well Water

CHAPS Action Plan					
Name of LPHA or Regional Collaborative: West Central Public Health Partnership					
PRIORITY: Drinking Water		STRATEGY: Improve the public’s knowledge and awareness of measures to improve their private drinking water supply safety and quality.			
Major Indicator: # of drinking water tests requested from CSU Extension Office, Mesa County Public Health					
Lead Entity: WCPHP		Supporting Entities: CSU Extension, Division of Water Resources			
Five Year Goal(s)	SMART* Objectives	Action Steps (Activities)	Organization(s) Responsible	Completion Date	Action Completed
Increase the knowledge of new well owners on safe drinking water and well testing.	Develop, publish and circulate information for private drinking water supply users by April 2015.	Research and collect informational brochures, handouts and publications from various sources.	Each participating county researches Delta County collects it	January 2014	X
		Adapt and publish information in various formats for the regional partnership. 1 page sheet with websites, publications	WCPHP EH group	April 2014	X
		Distribute and reach out to disseminate the information: building permits, septic permits, development permits (subdivision process).	WCPHP EH group	April 2015	
		Reach out to area well drillers to improve communication between EH and well drillers.	WCPHP EH group	April 2015	

# Types of Health Equity Trainings

- ▶ Understanding how Health Equity issues affect society and ourselves, history and self-reflection
- ▶ How to incorporate Health Equity into Public Health Agencies:
  - ▶ Similar to worksite wellness - gaining buy-in from leadership, forming a team, looking at policies and practices within the organization - hiring, program planning, measurement
  - ▶ The role of Public Health professionals in addressing the social determinants of health
- ▶ Data and Communicating about Health Equity:
  - ▶ Being explicit about how race affects health, using common values to explain why it is important to address health disparities. Explaining how health disparities are affected by social determinants like structural racism. Developing our comfort.
- ▶ How to engage the community to advance Health Equity

Tools for engaging the community or seeking out the voice of people affected by health disparities.

# IAP2's Public Participation Spectrum



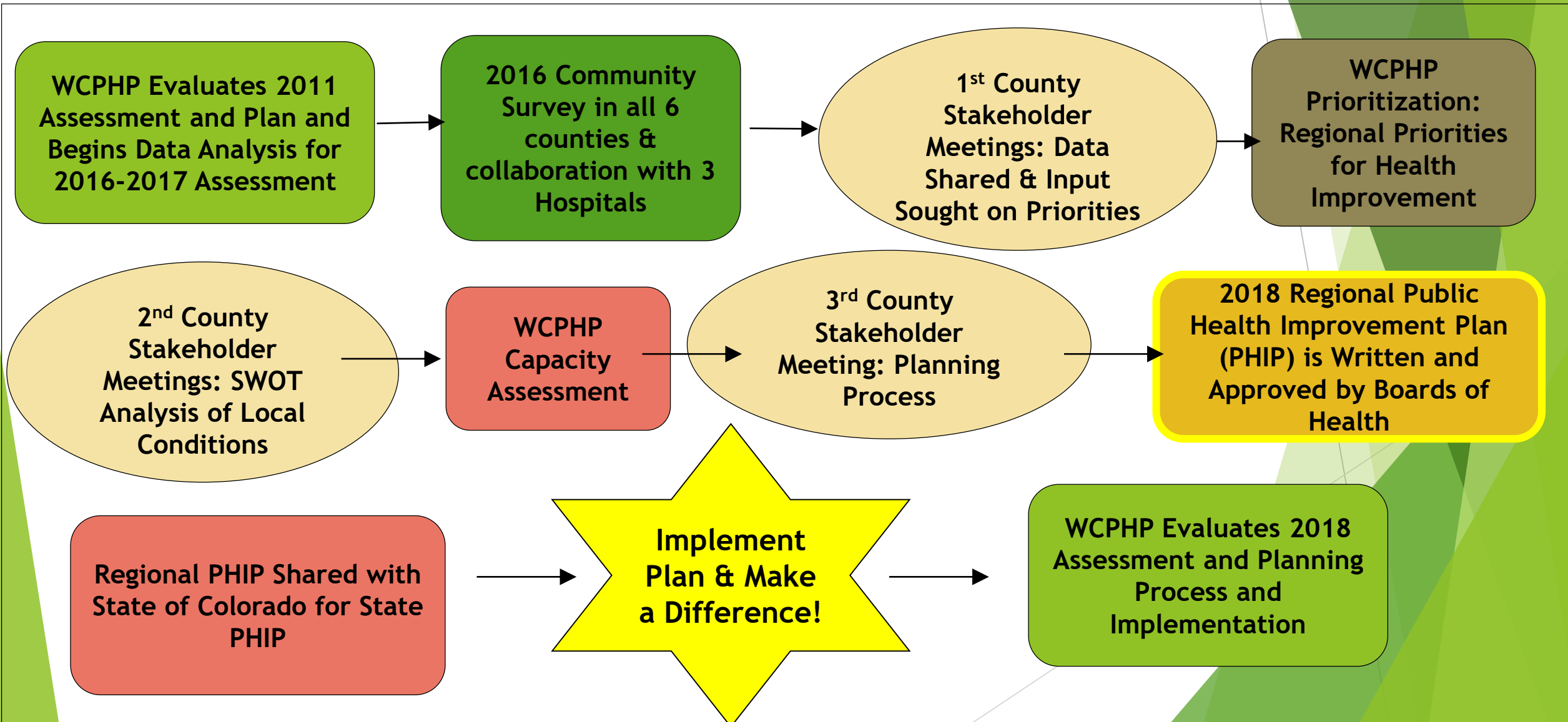
Increasing Level of Public Impact

	Inform	Consult	Involve	Collaborate	Empower
<b>Public participation goal</b>	To provide the public with balanced and objective information to assist them in understanding the problem, alternatives, opportunities and/or solutions.	To obtain public feedback on analysis, alternatives and/or decisions.	To work directly with the public throughout the process to ensure that public concerns and aspirations are consistently understood and considered.	To partner with the public in each aspect of the decision including the development of alternatives and the identification of the preferred solution.	To place final decision-making in the hands of the public.
<b>Promise to the public</b>	We will keep you informed.	We will keep you informed, listen to and acknowledge concerns and aspirations, and provide feedback on how public input influenced the decision.	We will work with you to ensure that your concerns and aspirations are directly reflected in the alternatives developed and provide feedback on how public input influenced the decision.	We will look to you for advice and innovation in formulating solutions and incorporate your advice and recommendations into the decisions to the maximum extent possible.	We will implement what you decide.
<b>Example techniques</b>	<ul style="list-style-type: none"> <li>■ Fact sheets</li> <li>■ Web sites</li> <li>■ Open houses</li> </ul>	<ul style="list-style-type: none"> <li>■ Public comment</li> <li>■ Focus groups</li> <li>■ Surveys</li> <li>■ Public meetings</li> </ul>	<ul style="list-style-type: none"> <li>■ Workshops</li> <li>■ Deliberative polling</li> </ul>	<ul style="list-style-type: none"> <li>■ Citizen advisory Committees</li> <li>■ Consensus-building</li> <li>■ Participatory decision-making</li> </ul>	<ul style="list-style-type: none"> <li>■ Citizen juries</li> <li>■ Ballots</li> <li>■ Delegated decision</li> </ul>

# Health Equity Activity

- ▶ Small Groups:
- ▶ Thinking about your strategy, decide what type of community engagement your team would recommend for the following projects (it's ok to be thinking about your local community):
  - ▶ STRATEGY 1: Improve access to healthy housing through policies such as health-promoting building codes, enforcing housing codes, and incentivizing mitigation
  - ▶ STRATEGY 2: Improve community knowledge of healthy housing practices such as testing and mitigation of radon, lead, and well-water.
  - ▶ STRATEGY 3: Increase health equity advocacy for safe affordable housing through participating in local and regional groups and coalitions.

# Overview of Regional Assessment and Planning Process



# Next Steps for Planning Process

- ▶ Capacity Assessment - Fall 2017
  - ▶ Internal WCPHP
- ▶ Regional Health Planning Meetings-Winter 2017
  - ▶ Do we need another Healthy Housing Stakeholder Meeting?
- ▶ Writing of Public Health Improvement Assessment and Plan Spring 2018
  - ▶ Approval by local Boards of Health
  - ▶ Share with communities and regional partners
  - ▶ Share with the State of Colorado